

**VEGF Antibody**  
**Purified Rabbit Polyclonal Antibody**  
**Catalog # ABV11593****Specification**

---

**VEGF Antibody - Product Information**

Application	<b>WB</b>
Primary Accession	<a href="#">P16612</a>
Other Accession	<a href="#">NP_001103803</a>
Reactivity	<b>Rat</b>
Host	<b>Rabbit</b>
Clonality	<b>Polyclonal</b>
Isotype	<b>Rabbit IgG</b>
Calculated MW	<b>25239</b>

**VEGF Antibody - Additional Information****Gene ID** 83785**Other Names**  
vascular endothelial growth factor**Target/Specificity**  
VEGF**Formulation**  
100 µg (0.5 mg/ml) affinity purified rabbit anti-VEGF polyclonal antibody in phosphate buffered saline (PBS), pH 7.2, containing 30% glycerol, 0.5% BSA and 0.01% thimerosal.**Handling**  
The antibody solution should be gently mixed before use.**Background Descriptions****Precautions**  
VEGF Antibody is for research use only and not for use in diagnostic or therapeutic procedures.**VEGF Antibody - Protein Information****Name** Vegfa**Synonyms** Vegf**Function**  
Growth factor active in angiogenesis, vasculogenesis and endothelial cell growth. Induces endothelial cell proliferation, promotes cell migration, inhibits apoptosis and induces permeabilization of blood vessels. Binds to the FLT1/VEGFR1 and KDR/VEGFR2 receptors, heparan

sulfate and heparin. May play a role in increasing vascular permeability during lactation, when increased transport of molecules from the blood is required for efficient milk protein synthesis. Binding to NRP1 receptor initiates a signaling pathway needed for motor neuron axon guidance and cell body migration, including for the caudal migration of facial motor neurons from rhombomere 4 to rhombomere 6 during embryonic development (By similarity). Also binds the DEAR/FBXW7-AS1 receptor (By similarity).

#### **Cellular Location**

Secreted. Note=VEGF-A120 is acidic and freely secreted. VEGF-A164 is more basic, has heparin-binding properties and, although a significant proportion remains cell-associated, most is freely secreted. VEGF-A188 is very basic, it is cell-associated after secretion and is bound avidly by heparin and the extracellular matrix, although it may be released as a soluble form by heparin, heparinase or plasmin (By similarity).

#### **Tissue Location**

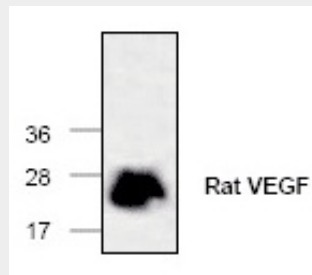
Expressed in the pituitary, in brain, in particularly in supraoptic and paraventricular nuclei and the choroid plexus. Also found abundantly in the corpus luteum of the ovary and in kidney glomeruli. Expressed in the ductal epithelial cells of post-pubertal mammary glands. Expressed in the ductal and alveolar epithelial cells throughout the whole period of gestational evolution, lactation and involution.

#### **VEGF Antibody - Protocols**

Provided below are standard protocols that you may find useful for product applications.

- [Western Blot](#)
- [Blocking Peptides](#)
- [Dot Blot](#)
- [Immunohistochemistry](#)
- [Immunofluorescence](#)
- [Immunoprecipitation](#)
- [Flow Cytometry](#)
- [Cell Culture](#)

#### **VEGF Antibody - Images**



Western blot analysis of rat VEGF using recombinant Rat VEGF.

#### **VEGF Antibody - Background**

VEGF (Vascular Endothelial Growth Factor) is a secreted homodimeric protein, secreted by a variety of vascularized tissues. VEGF stimulates endothelial cell growth, angiogenesis, and capillary permeability.