

**ELF5 Antibody (C-Term)**  
**Peptide-affinity purified goat antibody**  
**Catalog # AF2269a****Specification**

---

**ELF5 Antibody (C-Term) - Product Information**

Application	IHC
Primary Accession	<a href="#">O9UKW6</a>
Other Accession	<a href="#">NP_938195.1</a> , <a href="#">NP_001413.1</a> , <a href="#">2001</a> , <a href="#">13711 (mouse)</a>
Reactivity	Human
Predicted	Mouse, Rat
Host	Goat
Clonality	Polyclonal
Concentration	0.5 mg/ml
Isotype	IgG
Calculated MW	31263

**ELF5 Antibody (C-Term) - Additional Information****Gene ID** 2001**Other Names**

ETS-related transcription factor Elf-5, E74-like factor 5, Epithelium-restricted ESE-1-related Ets factor, Epithelium-specific Ets transcription factor 2, ESE-2, ELF5, ESE2

**Format**

0.5 mg/ml in Tris saline, 0.02% sodium azide, pH7.3 with 0.5% bovine serum albumin

**Storage**

Maintain refrigerated at 2-8°C for up to 6 months. For long term storage store at -20°C in small aliquots to prevent freeze-thaw cycles.

**Precautions**

ELF5 Antibody (C-Term) is for research use only and not for use in diagnostic or therapeutic procedures.

**ELF5 Antibody (C-Term) - Protein Information****Name** ELF5**Synonyms** ESE2**Function**

Transcriptionally activator that may play a role in regulating the later stages of keratinocytes terminal differentiation.

**Cellular Location**

Nucleus {ECO:0000255|PROSITE-ProRule:PRU00237}.

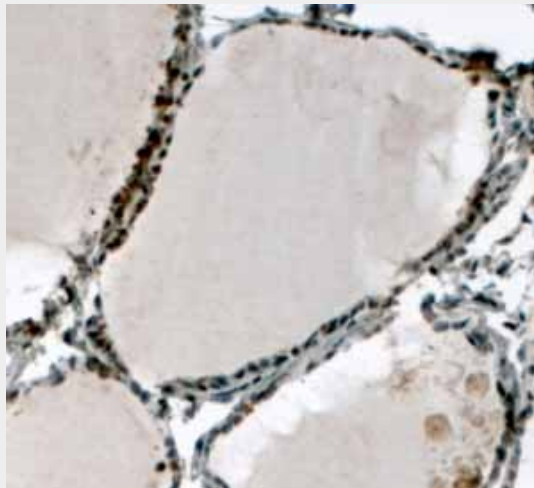
**Tissue Location**

Expressed exclusively in tissues with a high content of epithelial cells. Highly expressed in salivary gland, mammary gland, kidney and prostate. Weakly expressed in placenta and lung. Isoform 1 and isoform 2 are differentially expressed in different tissues. In the kidney, only isoform 1 was expressed, while prostate expressed both isoforms, with levels of isoform 2 being higher. Expression is up-regulated during keratinocyte differentiation. Several epithelial carcinoma cell lines showed lack of expression.

**ELF5 Antibody (C-Term) - Protocols**

Provided below are standard protocols that you may find useful for product applications.

- [Western Blot](#)
- [Blocking Peptides](#)
- [Dot Blot](#)
- [Immunohistochemistry](#)
- [Immunofluorescence](#)
- [Immunoprecipitation](#)
- [Flow Cytometry](#)
- [Cell Culture](#)

**ELF5 Antibody (C-Term) - Images**

AF2269a (4 µg/ml) staining of paraffin embedded Human Thyroid Gland. Steamed antigen retrieval with citrate buffer pH 6, HRP-staining. This data was obtained using a previous batch.

**ELF5 Antibody (C-Term) - Background**

This antibody is expected to recognise both reported Human isoforms represented by NP\_938195.1 and NP\_001413.1.

**ELF5 Antibody (C-Term) - References**

Characterization of ESE-2, a novel ESE-1-related Ets transcription factor that is restricted to glandular epithelium and differentiated keratinocytes. Oettgen P, Kas K, Dube A, Gu X, Grall F, Thamrongsak U, Akbarali Y, Finger

E, Boltax J, Endress G, Munger K, Kunsch C, Libermann TA. J Biol Chem. 1999 Oct 8;274(41):29439-52. PMID: 10506207