

Pitx1 antibody - middle region
Rabbit Polyclonal Antibody
Catalog # AI10451**Specification**

Pitx1 antibody - middle region - Product Information

Application	WB
Primary Accession	O99NA7
Other Accession	NM_053624 , NP_446076
Reactivity	Human, Mouse, Rat, Zebrafish, Pig, Horse, Bovine, Dog
Predicted	Human, Mouse, Rat, Zebrafish, Pig, Chicken, Bovine, Guinea Pig, Dog
Host	Rabbit
Clonality	Polyclonal
Calculated MW	34kDa KDa

Pitx1 antibody - middle region - Additional Information**Gene ID** 113983

Alias Symbol	Bft
--------------	------------

Other Names
Pituitary homeobox 1, Homeobox protein PITX1, Paired-like homeodomain transcription factor 1, Pitx1, Ptx1

Format
Liquid. Purified antibody supplied in 1x PBS buffer with 0.09% (w/v) sodium azide and 2% sucrose.

Reconstitution & Storage
Add 50 ul of distilled water. Final anti-Pitx1 antibody concentration is 1 mg/ml in PBS buffer with 2% sucrose. For longer periods of storage, store at 20°C. Avoid repeat freeze-thaw cycles.

Precautions
Pitx1 antibody - middle region is for research use only and not for use in diagnostic or therapeutic procedures.

Pitx1 antibody - middle region - Protein Information**Name** Pitx1**Synonyms** Ptx1

Function
Sequence-specific transcription factor that binds gene promoters and activates their transcription. May play a role in the development of anterior structures, and in particular, the brain and facies and in specifying the identity or structure of hindlimb.

Cellular Location

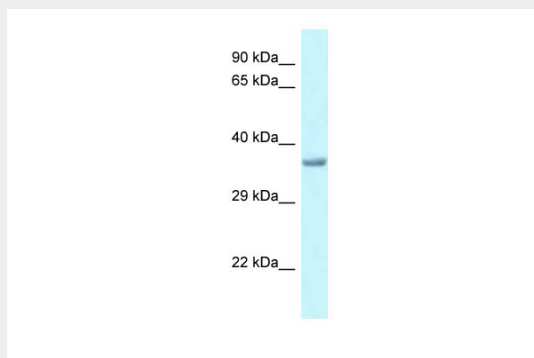
Nucleus.

Pitx1 antibody - middle region - Protocols

Provided below are standard protocols that you may find useful for product applications.

- [Western Blot](#)
- [Blocking Peptides](#)
- [Dot Blot](#)
- [Immunohistochemistry](#)
- [Immunofluorescence](#)
- [Immunoprecipitation](#)
- [Flow Cytometry](#)
- [Cell Culture](#)

Pitx1 antibody - middle region - Images



WB Suggested Anti-Pitx1 Antibody

Titration: 1. µg/ml

Positive Control: Rat Liver