

**Slc36a4 Antibody - N-terminal region**  
**Rabbit Polyclonal Antibody**  
**Catalog # AI12378****Specification**

---

**Slc36a4 Antibody - N-terminal region - Product Information**

Application	WB
Primary Accession	<a href="#">Q8CH36</a>
Other Accession	<a href="#">NM_172289</a> , <a href="#">NP_758493</a>
Reactivity	Human, Mouse, Rat, Rabbit, Pig, Horse, Bovine, Dog
Predicted	Human, Mouse, Rat, Rabbit, Pig, Horse, Bovine, Dog
Host	Rabbit
Clonality	Polyclonal
Calculated MW	55kDa kDa

**Slc36a4 Antibody - N-terminal region - Additional Information****Gene ID** 234967**Alias Symbol** 6330573I15Rik, PAT4**Other Names**

Proton-coupled amino acid transporter 4, Proton/amino acid transporter 4, Solute carrier family 36 member 4, Slc36a4, Pat4

**Format**

Liquid. Purified antibody supplied in 1x PBS buffer with 0.09% (w/v) sodium azide and 2% sucrose.

**Reconstitution & Storage**Add 50  $\mu$ l of distilled water. Final Anti-Slc36a4 antibody concentration is 1 mg/ml in PBS buffer with 2% sucrose. For longer periods of storage, store at -20°C. Avoid repeat freeze-thaw cycles.**Precautions**

Slc36a4 Antibody - N-terminal region is for research use only and not for use in diagnostic or therapeutic procedures.

**Slc36a4 Antibody - N-terminal region - Protein Information****Name** Slc36a4 {ECO:0000312|MGI:MGI:2442595}**Synonyms** Pat4**Function**

Uniporter that mediates the transport of neutral amino acids like L-tryptophan, proline and alanine. The transport activity is sodium ions-independent, electroneutral and therefore functions via facilitated diffusion.

### Cellular Location

Lysosome membrane; Multi-pass membrane protein

### Tissue Location

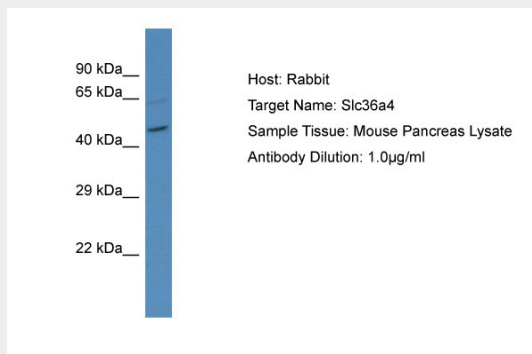
Highly expressed in hippocampus, hypothalamus and piriform cortex (at protein level) (PubMed:24530433). Expressed in epithelial cells and both inhibitory and excitatory neurons (PubMed:24530433).

### Slc36a4 Antibody - N-terminal region - Protocols

Provided below are standard protocols that you may find useful for product applications.

- [Western Blot](#)
- [Blocking Peptides](#)
- [Dot Blot](#)
- [Immunohistochemistry](#)
- [Immunofluorescence](#)
- [Immunoprecipitation](#)
- [Flow Cytometry](#)
- [Cell Culture](#)

### Slc36a4 Antibody - N-terminal region - Images



Host: Rabbit  
Target Name: Slc36a4  
Sample Tissue: Mouse Pancreas lysates  
Antibody Dilution: 1.0µg/ml