

**ASPH antibody - N-terminal region**  
**Rabbit Polyclonal Antibody**  
**Catalog # AI13301****Specification**

---

**ASPH antibody - N-terminal region - Product Information**

Application	IHC, WB
Primary Accession	<a href="#">O9NRI0</a>
Other Accession	<a href="#">NM_020164</a> , <a href="#">NP_064549</a>
Reactivity	Human, Mouse, Rat, Rabbit, Pig, Horse, Dog
Predicted Host	Human, Mouse, Rat, Dog
Clonality	Rabbit
Calculated MW	Polyclonal 25kDa KDa

**ASPH antibody - N-terminal region - Additional Information**

Alias Symbol **BAH, CASQ2BP1, HAAH, JCTN, junctin, AAH**  
**Format**

Liquid. Purified antibody supplied in 1x PBS buffer with 0.09% (w/v) sodium azide and 2% sucrose.

**Reconstitution & Storage**

Add 100 ul of distilled water. Final anti-ASPH antibody concentration is 1 mg/ml in PBS buffer with 2% sucrose. For longer periods of storage, store at 20°C. Avoid repeat freeze-thaw cycles.

**Precautions**

ASPH antibody - N-terminal region is for research use only and not for use in diagnostic or therapeutic procedures.

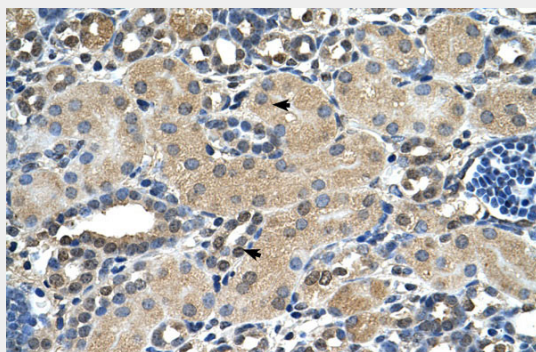
**ASPH antibody - N-terminal region - Protein Information****ASPH antibody - N-terminal region - Protocols**

Provided below are standard protocols that you may find useful for product applications.

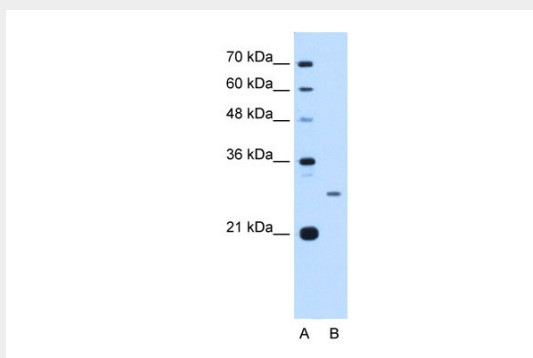
- [Western Blot](#)
- [Blocking Peptides](#)
- [Dot Blot](#)
- [Immunohistochemistry](#)
- [Immunofluorescence](#)
- [Immunoprecipitation](#)
- [Flow Cytometry](#)
- [Cell Culture](#)

**ASPH antibody - N-terminal region - Images**

---



Human kidney



WB Suggested Anti-ASPH Antibody Titration: 2.5 $\mu$ g/ml

Positive Control: HepG2 cell lysate

There is BioGPS gene expression data showing that ASPH is expressed in HepG2