

ADGRB2 / BAI2 Antibody (N-Terminus)
Rabbit Polyclonal Antibody
Catalog # ALS10231**Specification**

ADGRB2 / BAI2 Antibody (N-Terminus) - Product Information

Application	IHC
Primary Accession	O60241
Reactivity	Human
Host	Rabbit
Clonality	Polyclonal
Calculated MW	173kDa KDa

ADGRB2 / BAI2 Antibody (N-Terminus) - Additional Information**Gene ID** 576**Other Names**

Brain-specific angiogenesis inhibitor 2, BAI2

Target/Specificity

Human BAI2. BLAST analysis of the peptide immunogen showed no homology with other human proteins.

Reconstitution & Storage

Long term: -70°C; Short term: +4°C

Precautions

ADGRB2 / BAI2 Antibody (N-Terminus) is for research use only and not for use in diagnostic or therapeutic procedures.

ADGRB2 / BAI2 Antibody (N-Terminus) - Protein Information**Name** ADGRB2 ([HGNC:944](#))**Synonyms** BAI2**Function**

Orphan G-protein coupled receptor involved in cell adhesion and probably in cell-cell interactions. Activates NFAT-signaling pathway, a transcription factor, via the G-protein GNAZ (PubMed:20367554, PubMed:28891236). Involved in angiogenesis inhibition (By similarity).

Cellular Location

Cell membrane; Multi-pass membrane protein. Secreted

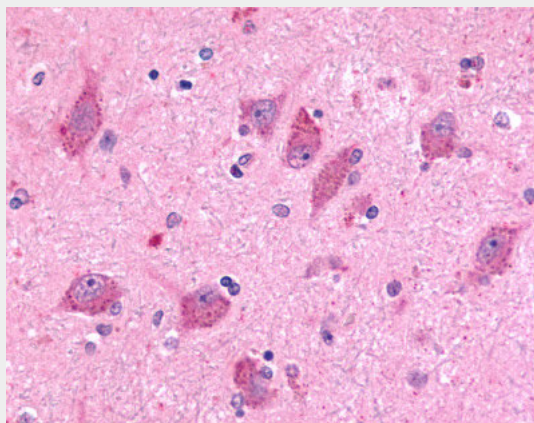
Tissue Location

Detected in cerebrospinal fluid (at protein level) (PubMed:25326458). Strongly expressed in brain. Also detected in heart, thymus, skeletal muscle, and different cell lines

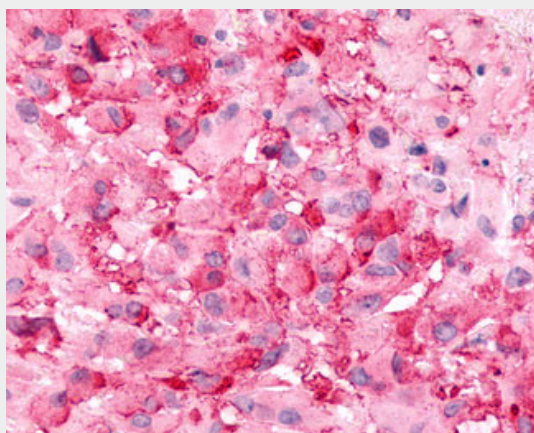
Volume50 μ l**ADGRB2 / BAI2 Antibody (N-Terminus) - Protocols**

Provided below are standard protocols that you may find useful for product applications.

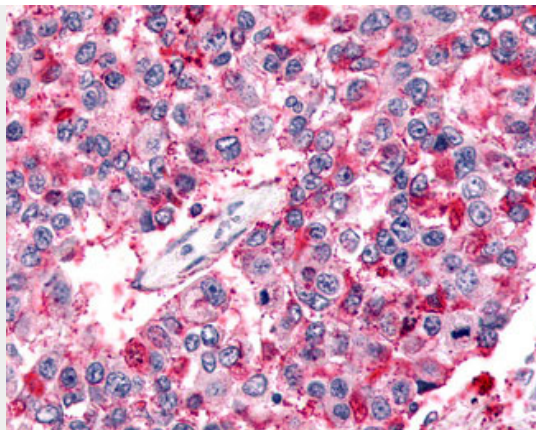
- [Western Blot](#)
- [Blocking Peptides](#)
- [Dot Blot](#)
- [Immunohistochemistry](#)
- [Immunofluorescence](#)
- [Immunoprecipitation](#)
- [Flow Cytometry](#)
- [Cell Culture](#)

ADGRB2 / BAI2 Antibody (N-Terminus) - Images

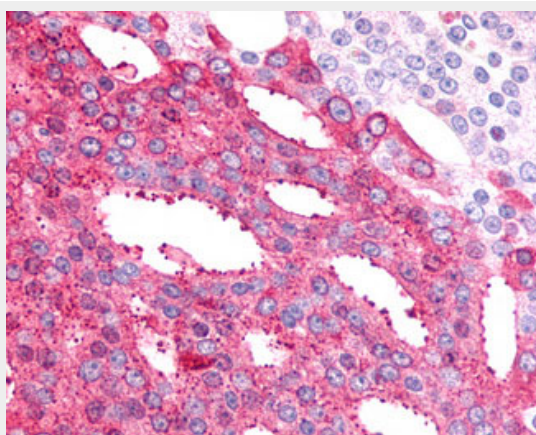
Anti-BAI2 antibody ALS10231 IHC of human brain, neurons and glia.



Anti-BAI2 antibody IHC of human Brain, Glioblastoma.



Anti-BAI2 antibody IHC of human Lung, Non-Small Cell Carcinoma.



Anti-BAI2 antibody IHC of human Prostate, Carcinoma.

ADGRB2 / BAI2 Antibody (N-Terminus) - Background

Might be involved in angiogenesis inhibition.

ADGRB2 / BAI2 Antibody (N-Terminus) - References

Shiratsuchi T.,et al.Cytogenet. Cell Genet. 79:103-108(1997).
Suwa M.,et al.Submitted (JUL-2001) to the EMBL/GenBank/DDBJ databases.
Gregory S.G.,et al.Nature 441:315-321(2006).