

EIF4G1 / EIF4G Antibody (Ser1232)
Rabbit Polyclonal Antibody
Catalog # ALS16302**Specification**

EIF4G1 / EIF4G Antibody (Ser1232) - Product Information

Application	WB, IHC
Primary Accession	Q04637
Reactivity	Human
Host	Rabbit
Clonality	Polyclonal
Calculated MW	175kDa KDa

EIF4G1 / EIF4G Antibody (Ser1232) - Additional Information**Gene ID** 1981**Other Names**

Eukaryotic translation initiation factor 4 gamma 1, eIF-4-gamma 1, eIF-4G 1, eIF-4G1, p220, EIF4G1, EIF4F, EIF4G, EIF4GI

Target/Specificity

Endogenous levels of total eIF4G protein.

Reconstitution & Storage

Store at -20°C.

Precautions

EIF4G1 / EIF4G Antibody (Ser1232) is for research use only and not for use in diagnostic or therapeutic procedures.

EIF4G1 / EIF4G Antibody (Ser1232) - Protein Information**Name** EIF4G1**Synonyms** EIF4F, EIF4G, EIF4GI**Function**

Component of the protein complex eIF4F, which is involved in the recognition of the mRNA cap, ATP-dependent unwinding of 5'-terminal secondary structure and recruitment of mRNA to the ribosome (PubMed: [29987188](http://www.uniprot.org/citations/29987188)). Exists in two complexes, either with EIF1 or with EIF4E (mutually exclusive) (PubMed: [29987188](http://www.uniprot.org/citations/29987188)). Together with EIF1, is required for leaky scanning, in particular for avoiding cap-proximal start codon (PubMed: [29987188](http://www.uniprot.org/citations/29987188)). Together with EIF4E, antagonizes the scanning promoted by EIF1-EIF4G1 and locates the start codon (through a TISU element) without scanning (PubMed: [29987188](http://www.uniprot.org/citations/29987188)).

[29987188](http://www.uniprot.org/citations/29987188)). As a member of the eIF4F complex, required for endoplasmic reticulum stress-induced ATF4 mRNA translation (PubMed: [29062139](http://www.uniprot.org/citations/29062139)).

Cellular Location

Cytoplasm. Nucleus. Cytoplasm, Stress granule

Volume

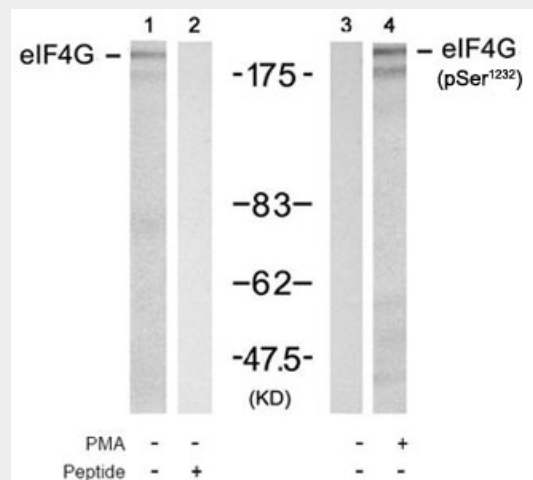
50 μ l

EIF4G1 / EIF4G Antibody (Ser1232) - Protocols

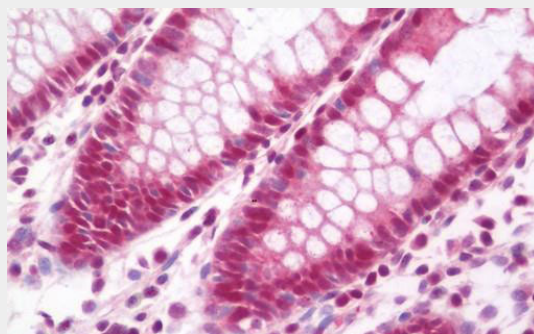
Provided below are standard protocols that you may find useful for product applications.

- [Western Blot](#)
- [Blocking Peptides](#)
- [Dot Blot](#)
- [Immunohistochemistry](#)
- [Immunofluorescence](#)
- [Immunoprecipitation](#)
- [Flow Cytometry](#)
- [Cell Culture](#)

EIF4G1 / EIF4G Antibody (Ser1232) - Images



Western blot of extracts from 293 cell using Rabbit Anti-eIF4G (Ab-1232) Polyclonal Antibody...



Anti-EIF4G1 / EIF4G antibody IHC staining of human colon.

EIF4G1 / EIF4G Antibody (Ser1232) - Background

Component of the protein complex eIF4F, which is involved in the recognition of the mRNA cap, ATP-dependent unwinding of 5'-terminal secondary structure and recruitment of mRNA to the ribosome.

EIF4G1 / EIF4G Antibody (Ser1232) - References

Yan R.,et al.J. Biol. Chem. 267:23226-23231(1992).
Imataka H.,et al.EMBO J. 17:7480-7489(1998).
Gradi A.,et al.Mol. Cell. Biol. 18:334-342(1998).
Byrd M.P.,et al.Mol. Cell. Biol. 22:4499-4511(2002).
Ota T.,et al.Nat. Genet. 36:40-45(2004).