

H1L Antibody
Purified Mouse Monoclonal Antibody (Mab)
Catalog # AM1012a**Specification**

H1L Antibody - Product Information

Application	WB,E
Primary Accession	P20495
Reactivity	Vaccinia Virus
Host	Mouse
Clonality	Monoclonal
Isotype	IgG2a

H1L Antibody - Additional Information**Other Names**

Dual specificity protein phosphatase H1, 313-, Late protein H1, H1L

Target/Specificity

Purified recombinant H1L fusion protein was used to produced this monoclonal antibody.

Dilution

WB~~1:500~1000

Format

Purified monoclonal antibody supplied in PBS with 0.09% (W/V) sodium azide. This antibody is purified through a protein G column, followed by dialysis against PBS.

Storage

Maintain refrigerated at 2-8°C for up to 2 weeks. For long term storage store at -20°C in small aliquots to prevent freeze-thaw cycles.

Precautions

H1L Antibody is for research use only and not for use in diagnostic or therapeutic procedures.

H1L Antibody - Protein Information**Name** OPG106

Function Serine/tyrosine phosphatase which down-regulates cellular antiviral response by dephosphorylating activated host STAT1 and blocking interferon (IFN)-stimulated innate immune responses. Dephosphorylates the OPG144 protein.

Cellular Location

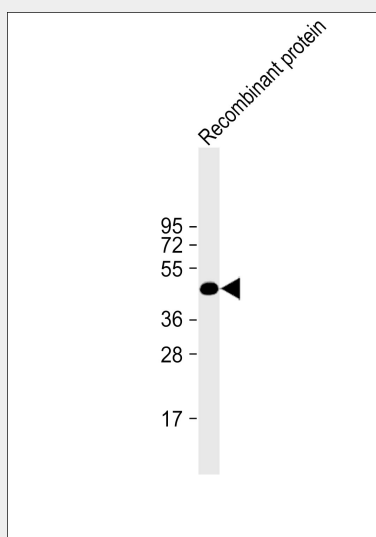
Virion {ECO:0000250|UniProtKB:P07239}. Host cytoplasm {ECO:0000250|UniProtKB:P07239}. Note=Approximately 200 molecules of OPG106 are packaged within the virion and are essential for the viability of the virus. {ECO:0000250|UniProtKB:P07239}

H1L Antibody - Protocols

Provided below are standard protocols that you may find useful for product applications.

- [Western Blot](#)
- [Blocking Peptides](#)
- [Dot Blot](#)
- [Immunohistochemistry](#)
- [Immunofluorescence](#)
- [Immunoprecipitation](#)
- [Flow Cytometry](#)
- [Cell Culture](#)

H1L Antibody - Images



"Anti-H1L Antibody at 1:500 dilution + recombinant protein whole cell lysate Secondary Goat Anti-mouse IgG, (H+L), Peroxidase conjugated at 1/10000 dilution. Predicted band size : 19672 Da Blocking/Dilution buffer: 5% NFDM/TBST."



Western blot analysis of anti-H1L Mab (SG071115B) in recombinant pGEX-H1L protein. H1L (arrow) was detected using the purified Mab.

H1L Antibody - Background

This Protein shows activity toward tyrosine-protein phosphate as well as with serine-protein phosphate.

H1L Antibody - References

Goebel S.J., Virology 179:247-266(1990). Goebel S.J., Virology 179:517-563(1990).