

**Rat Serpinh1 Antibody (Center)**  
**Purified Mouse Monoclonal Antibody (Mab)**  
**Catalog # AM1834a****Specification**

---

**Rat Serpinh1 Antibody (Center) - Product Information**

Application	WB, IHC-P,E
Primary Accession	<a href="#">P29457</a>
Other Accession	<a href="#">P19324</a> , <a href="#">P50454</a> , <a href="#">Q2KJH6</a>
Reactivity	Human, Rat
Predicted	Bovine, Mouse
Host	Mouse
Clonality	Monoclonal
Isotype	IgG1
Calculated MW	46518
Antigen Region	222-251

**Rat Serpinh1 Antibody (Center) - Additional Information****Gene ID** 29345**Other Names**

Serp H1, 47 kDa heat shock protein, Collagen-binding protein, Colligin, GP46, Serpinh1, Cbp1, Hsp47

**Target/Specificity**

This Rat Serpinh1 antibody is generated from mice immunized with a KLH conjugated synthetic peptide between 222-251 amino acids from the Central region of rat Serpinh1.

**Dilution**

WB~~1:500~1000

IHC-P~~1:50~100

**Format**

Purified monoclonal antibody supplied in PBS with 0.09% (W/V) sodium azide. This antibody is purified through a protein G column, followed by dialysis against PBS.

**Storage**

Maintain refrigerated at 2-8°C for up to 2 weeks. For long term storage store at -20°C in small aliquots to prevent freeze-thaw cycles.

**Precautions**

Rat Serpinh1 Antibody (Center) is for research use only and not for use in diagnostic or therapeutic procedures.

**Rat Serpinh1 Antibody (Center) - Protein Information****Name** Serpinh1

**Synonyms** Cbp1, Hsp47

**Function** Binds specifically to collagen. Could be involved as a chaperone in the biosynthetic pathway of collagen.

**Cellular Location**

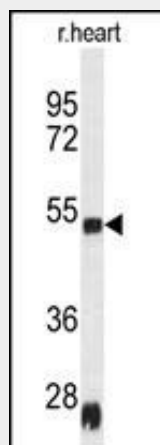
Endoplasmic reticulum lumen.

**Rat Serpinh1 Antibody (Center) - Protocols**

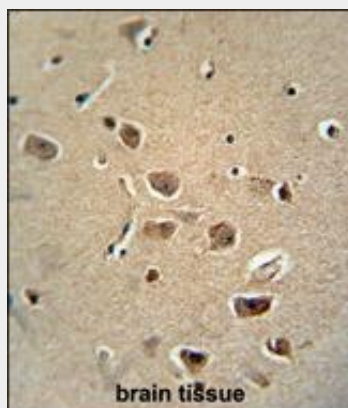
Provided below are standard protocols that you may find useful for product applications.

- [Western Blot](#)
- [Blocking Peptides](#)
- [Dot Blot](#)
- [Immunohistochemistry](#)
- [Immunofluorescence](#)
- [Immunoprecipitation](#)
- [Flow Cytometry](#)
- [Cell Culture](#)

**Rat Serpinh1 Antibody (Center) - Images**



Western blot analysis of RAT SERPH Antibody (Center) (Cat. #AM1834a) in rat heart tissue lysates (35µg/lane).SERPH (arrow) was detected using the purified Mab.(1:100)



RAT SERPH Monoclonal Antibody (Center) (Cat. #AM1834a) immunohistochemistry analysis in

formalin fixed and paraffin embedded human brain tissue followed by peroxidase conjugation of the secondary antibody and DAB staining. This data demonstrates the use of the RAT SERPH Monoclonal Antibody (Center) for immunohistochemistry. Clinical relevance has not been evaluated.

#### **Rat Serpinh1 Antibody (Center) - References**

Localization of HSP47 mRNA in murine bleomycin-induced pulmonary fibrosis. Kakugawa T, et al. Virchows Arch, 2010 Mar. PMID 20094730. The level of the transcription factor Pax6 is essential for controlling the balance between neural stem cell self-renewal and neurogenesis. Sansom SN, et al. PLoS Genet, 2009 Jun. PMID 19521500. Fog2 is critical for cardiac function and maintenance of coronary vasculature in the adult mouse heart. Zhou B, et al. J Clin Invest, 2009 Jun. PMID 19411759. Adenovirus-mediated RNA interference against collagen-specific molecular chaperone 47-KDa heat shock protein suppresses scar formation on mouse wounds. Wang Z, et al. Cell Biol Int, 2008 May. PMID 18093850. Type I collagen in Hsp47-null cells is aggregated in endoplasmic reticulum and deficient in N-propeptide processing and fibrillogenesis. Ishida Y, et al. Mol Biol Cell, 2006 May. PMID 16525016.