

MAP4K3 Antibody
Mouse Monoclonal Antibody (Mab)
Catalog # AM1903b**Specification**

MAP4K3 Antibody - Product Information

Application	WB, IHC-P,E
Primary Accession	Q8IVH8
Other Accession	NP_003609.2
Reactivity	Human
Host	Mouse
Clonality	Monoclonal
Isotype	IgM,k
Calculated MW	101316

MAP4K3 Antibody - Additional Information**Gene ID** 8491**Other Names**

Mitogen-activated protein kinase kinase kinase kinase 3, Germinal center kinase-related protein kinase, GLK, MAPK/ERK kinase kinase kinase 3, MEK kinase kinase 3, MEKKK 3, MAP4K3, RAB8IPL1

Target/Specificity

This MAP4K3 monoclonal antibody is generated from mouse immunized with MAP4K3 recombinant protein.

Dilution

WB~~1:500~1000

IHC-P~~1:100

Format

Purified monoclonal antibody supplied in PBS with 0.09% (W/V) sodium azide. This antibody is prepared by Euglobin precipitation followed by dialysis against PBS.

Storage

Maintain refrigerated at 2-8°C for up to 2 weeks. For long term storage store at -20°C in small aliquots to prevent freeze-thaw cycles.

Precautions

MAP4K3 Antibody is for research use only and not for use in diagnostic or therapeutic procedures.

MAP4K3 Antibody - Protein Information**Name** MAP4K3**Synonyms** RAB8IPL1

Function May play a role in the response to environmental stress. Appears to act upstream of the JUN N-terminal pathway.

Tissue Location

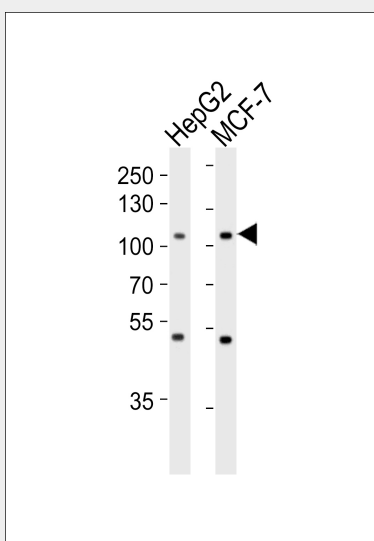
Ubiquitously expressed in all tissues examined, with high levels in heart, brain, placenta, skeletal muscle, kidney and pancreas and lower levels in lung and liver

MAP4K3 Antibody - Protocols

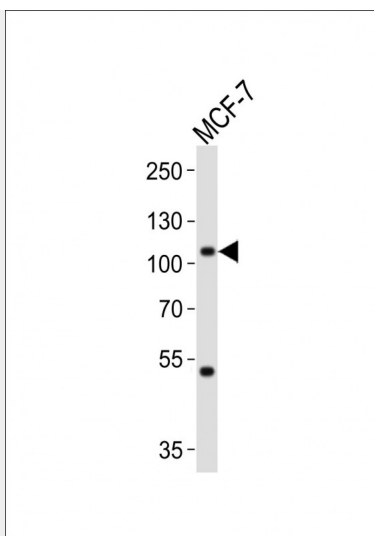
Provided below are standard protocols that you may find useful for product applications.

- [Western Blot](#)
- [Blocking Peptides](#)
- [Dot Blot](#)
- [Immunohistochemistry](#)
- [Immunofluorescence](#)
- [Immunoprecipitation](#)
- [Flow Cytometry](#)
- [Cell Culture](#)

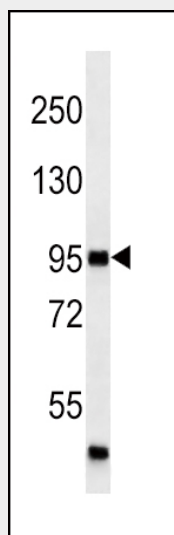
MAP4K3 Antibody - Images



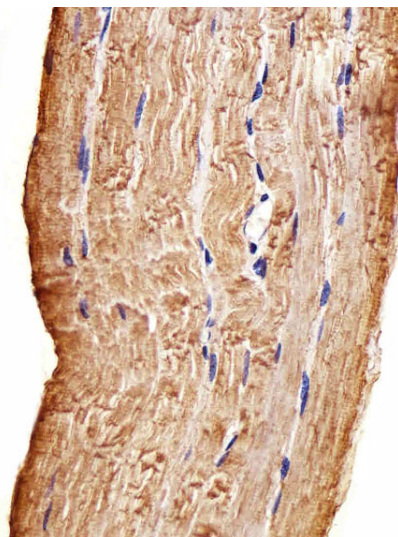
Western blot analysis of lysates from HepG2, MCF-7 cell line (from left to right), using MAP4K3 Antibody (Cat. #AM1903b). AM1903b was diluted at 1:1000 at each lane. A goat anti-mouse IgG H&L(HRP) at 1:3000 dilution was used as the secondary antibody. Lysates at 35µg per lane.



Western blot analysis of lysate from MCF-7 cell line, using MAP4K3(Cat. #AM1903b). AM1903b was diluted at 1:1000. A goat anti-mouse IgG H&L(HRP) at 1:10000 dilution was used as the secondary antibody. Lysate at 20 μ g.



MAP4K3 (Cat. #AM1903b) western blot analysis in A2058 cell line lysates (35 μ g/lane). This demonstrates the MAP4K3 antibody detected the MAP4K3 protein (arrow).



Immunohistochemical analysis of paraffin-embedded H. skeletal muscle section using MAP4K3 Antibody(Cat#AM1903b). AM1903b was diluted at 1:100 dilution. A undiluted biotinylated goat polyvalent antibody was used as the secondary, followed by DAB staining.

MAP4K3 Antibody - Background

This gene encodes a member of the Ste20 family of serine/threonine protein kinases. The protein belongs to the subfamily that consists of members, such as germinal center kinase (GCK), that are characterized by an N-terminal catalytic domain and C-terminal regulatory domain. The kinase activity of the encoded protein can be stimulated by UV radiation and tumor necrosis factor-alpha. The protein specifically activates the c-Jun N-terminal kinase (JNK) signaling pathway. Evidence suggests that it functions upstream of mitogen-activated protein kinase kinase kinase 1 (MEKK1). This gene previously was referred to as RAB8-interacting protein-like 1 (RAB8IPL1), but it has been renamed mitogen-activated protein kinase kinase kinase 3 (MAP4K3).

MAP4K3 Antibody - References

Bailey, S.D., et al. Diabetes Care 33(10):2250-2253(2010)
Ichikawa, S., et al. J. Bone Miner. Res. 25(8):1821-1829(2010)
Rose, J.E., et al. Mol. Med. 16 (7-8), 247-253 (2010) :
Yan, L., et al. Mol. Cell 37(5):633-642(2010)
Talmud, P.J., et al. Am. J. Hum. Genet. 85(5):628-642(2009)