

**SWAP70 Antibody**  
**Mouse Monoclonal Antibody (Mab)**  
**Catalog # AM2029b****Specification**

---

**SWAP70 Antibody - Product Information**

Application	WB,E
Primary Accession	<a href="#">O9UH65</a>
Other Accession	<a href="#">NP_055870.2</a>
Reactivity	Human
Host	Mouse
Clonality	Monoclonal
Isotype	IgG1
Calculated MW	68998

**SWAP70 Antibody - Additional Information****Gene ID** 23075**Other Names**

Switch-associated protein 70, SWAP-70, SWAP70, KIAA0640

**Target/Specificity**

Purified His-tagged SWAP70 protein(Fragment) was used to produced this monoclonal antibody.

**Dilution**

WB~~1:100~1000

**Format**

Purified monoclonal antibody supplied in PBS with 0.09% (W/V) sodium azide. This antibody is purified through a protein G column, followed by dialysis against PBS.

**Storage**

Maintain refrigerated at 2-8°C for up to 2 weeks. For long term storage store at -20°C in small aliquots to prevent freeze-thaw cycles.

**Precautions**

SWAP70 Antibody is for research use only and not for use in diagnostic or therapeutic procedures.

**SWAP70 Antibody - Protein Information****Name** SWAP70**Synonyms** KIAA0640**Function** Phosphatidylinositol 3,4,5-trisphosphate-dependent guanine nucleotide exchange factor (GEF) which, independently of RAS, transduces signals from tyrosine kinase receptors to RAC. It also mediates signaling of membrane ruffling. Regulates the actin cytoskeleton as an effector or

adapter protein in response to agonist stimulated phosphatidylinositol (3,4)-bisphosphate production and cell protrusion (By similarity).

#### Cellular Location

Cytoplasm. Cell membrane. Nucleus. Cell projection, lamellipodium. Cytoplasm, cytoskeleton.

Note=In resting B-cells it is localized mainly in the cytoplasm and upon cell activation it is recruited to the plasma membrane and then translocates to the nucleus (PubMed:10681448) In activated, class-switching B-cells it is associated with membrane IgG but not IgM (PubMed:10681448). Localized to loose actin filament arrays located behind actively extending lamellipodia (PubMed:12925760).

#### Tissue Location

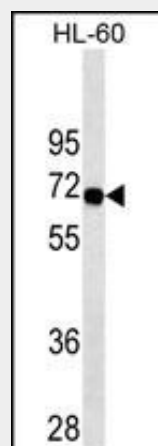
Expressed only in mature B-cells including those associated with mucosa-associated tissue and bronchus-associated tissue (PubMed:10681448). Widely expressed. Abundant in spleen, and fairly abundant in kidney, lung and liver. Also found in monocytes and macrophages (PubMed:12925760).

### SWAP70 Antibody - Protocols

Provided below are standard protocols that you may find useful for product applications.

- [Western Blot](#)
- [Blocking Peptides](#)
- [Dot Blot](#)
- [Immunohistochemistry](#)
- [Immunofluorescence](#)
- [Immunoprecipitation](#)
- [Flow Cytometry](#)
- [Cell Culture](#)

### SWAP70 Antibody - Images



SWAP70 Antibody (Cat. #AM2029b) western blot analysis in HL-60 cell line lysates (35µg/lane). This demonstrates the SWAP70 antibody detected the SWAP70 protein (arrow).

### SWAP70 Antibody - Background

Phosphatidylinositol 3,4,5-trisphosphate-dependent guanine nucleotide exchange factor (GEF) which, independently of RAS, transduces signals from tyrosine kinase receptors to RAC. It also mediates signaling of membrane ruffling. Regulates the actin cytoskeleton as an effector or adapter

protein in response to agonist stimulated phosphatidylinositol (3,4)-bisphosphate production and cell protrusion (By similarity).

#### **SWAP70 Antibody - References**

Liu, J., et al. J. Histochem. Cytochem. 55(7):701-708(2007)  
Ihara, S., et al. J. Cell. Sci. 119 (PT 3), 500-507 (2006) :  
Kimbara, N., et al. Microbiol. Immunol. 50(3):235-242(2006)  
Hilpela, P., et al. Mol. Biol. Cell 14(8):3242-3253(2003)  
Rapalus, L., et al. Clin. Immunol. 101(3):270-275(2001)