

**B2M Antibody (Ascites)**  
**Mouse Monoclonal Antibody (Mab)**  
**Catalog # AM2052a****Specification**

---

**B2M Antibody (Ascites) - Product Information**

Application	WB,E
Primary Accession	<a href="#">P61769</a>
Other Accession	<a href="#">NP_004039.1</a>
Reactivity	Human
Host	Mouse
Clonality	Monoclonal
Isotype	IgG1
Calculated MW	13715
Antigen Region	10-39

**B2M Antibody (Ascites) - Additional Information****Gene ID** 567**Other Names**

Beta-2-microglobulin, Beta-2-microglobulin form pl 53, B2M

**Target/Specificity**

This B2M antibody is generated from mice immunized with a KLH conjugated synthetic peptide between 10-39 amino acids from human B2M.

**Dilution**

WB~~1:1000~16000

**Format**

Mouse monoclonal antibody supplied in crude ascites with 0.09% (W/V) sodium azide.

**Storage**

Maintain refrigerated at 2-8°C for up to 2 weeks. For long term storage store at -20°C in small aliquots to prevent freeze-thaw cycles.

**Precautions**

B2M Antibody (Ascites) is for research use only and not for use in diagnostic or therapeutic procedures.

**B2M Antibody (Ascites) - Protein Information****Name** B2M ([HGNC:914](#))

**Function** Component of the class I major histocompatibility complex (MHC). Involved in the presentation of peptide antigens to the immune system. Exogenously applied M.tuberculosis EsxA or EsxA-EsxB (or EsxA expressed in host) binds B2M and decreases its export to the cell surface

(total protein levels do not change), probably leading to defects in class I antigen presentation (PubMed:[25356553](#)).

#### **Cellular Location**

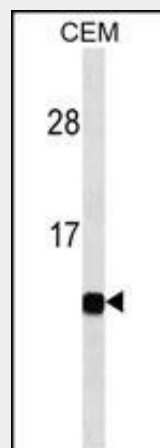
Secreted. Cell surface. Note=Detected in serum and urine (PubMed:1336137, PubMed:7554280). {ECO:0000269|PubMed:7554280, ECO:0000269|Ref.6}

#### **B2M Antibody (Ascites) - Protocols**

Provided below are standard protocols that you may find useful for product applications.

- [Western Blot](#)
- [Blocking Peptides](#)
- [Dot Blot](#)
- [Immunohistochemistry](#)
- [Immunofluorescence](#)
- [Immunoprecipitation](#)
- [Flow Cytometry](#)
- [Cell Culture](#)

#### **B2M Antibody (Ascites) - Images**



B2M Antibody (Cat. #AM2052a) western blot analysis in CEM cell line lysates (35µg/lane). This demonstrates the B2M antibody detected the B2M protein (arrow).

#### **B2M Antibody (Ascites) - Background**

This gene encodes a serum protein found in association with the major histocompatibility complex (MHC) class I heavy chain on the surface of nearly all nucleated cells. The protein has a predominantly beta-pleated sheet structure that can form amyloid fibrils in some pathological conditions. A mutation in this gene has been shown to result in hypercatabolic hypoproteinemia.

#### **B2M Antibody (Ascites) - References**

Bailey, S.D., et al. Diabetes Care 33(10):2250-2253(2010)  
Rennella, E., et al. J. Mol. Biol. 401(2):286-297(2010)  
Debelouchina, G.T., et al. J. Am. Chem. Soc. 132(30):10414-10423(2010)  
Mumtaz, A., et al. Saudi J Kidney Dis Transpl 21(4):701-706(2010)

Guo, H.C., et al. Nature 360(6402):364-366(1992)