

**HKLK3 Antibody (C234)**  
**Mouse Monoclonal Antibody (Mab)**  
**Catalog # AM2088b****Specification**

---

**HKLK3 Antibody (C234) - Product Information**

|                   |                           |
|-------------------|---------------------------|
| Application       | WB,E                      |
| Primary Accession | <a href="#">P07288</a>    |
| Other Accession   | <a href="#">NP_001639</a> |
| Reactivity        | Human                     |
| Host              | Mouse                     |
| Clonality         | Monoclonal                |
| Isotype           | IgM                       |
| Calculated MW     | 28741                     |
| Antigen Region    | 220-250                   |

**HKLK3 Antibody (C234) - Additional Information****Gene ID** 354**Other Names**

Prostate-specific antigen, PSA, Gamma-seminoprotein, Semin, Kallikrein-3, P-30 antigen, Semenogelase, KLK3, APS

**Target/Specificity**

This HKLK3 antibody is generated from mice immunized with a KLH conjugated synthetic peptide between 220-250 amino acids from human HKLK3.

**Dilution**

WB~~1:100

**Format**

Purified monoclonal antibody supplied in PBS with 0.09% (W/V) sodium azide. This antibody is prepared by Euglobin precipitation followed by dialysis against PBS.

**Storage**

Maintain refrigerated at 2-8°C for up to 2 weeks. For long term storage store at -20°C in small aliquots to prevent freeze-thaw cycles.

**Precautions**

HKLK3 Antibody (C234) is for research use only and not for use in diagnostic or therapeutic procedures.

**HKLK3 Antibody (C234) - Protein Information****Name** KLK3**Synonyms** APS

**Function** Hydrolyzes semenogelin-1 thus leading to the liquefaction of the seminal coagulum.

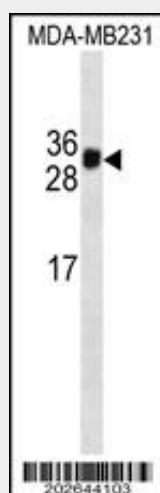
**Cellular Location**  
Secreted.

### HKLK3 Antibody (C234) - Protocols

Provided below are standard protocols that you may find useful for product applications.

- [Western Blot](#)
- [Blocking Peptides](#)
- [Dot Blot](#)
- [Immunohistochemistry](#)
- [Immunofluorescence](#)
- [Immunoprecipitation](#)
- [Flow Cytometry](#)
- [Cell Culture](#)

### HKLK3 Antibody (C234) - Images



HKLK3 Antibody (C234)(Cat. #AM2088b) western blot analysis in MDA-MB231 cell line lysates (35µg/lane). This demonstrates the HKLK3 antibody detected the HKLK3 protein (arrow).

### HKLK3 Antibody (C234) - Background

Kallikreins are a subgroup of serine proteases having diverse physiological functions. Growing evidence suggests that many kallikreins are implicated in carcinogenesis and some have potential as novel cancer and other disease biomarkers. This gene is one of the fifteen kallikrein subfamily members located in a cluster on chromosome 19. Its protein product is a protease present in seminal plasma. It is thought to function normally in the liquefaction of seminal coagulum, presumably by hydrolysis of the high molecular mass seminal vesicle protein. Serum level of this protein, called PSA in the clinical setting, is useful in the diagnosis and monitoring of prostatic carcinoma. Alternate splicing of this gene generates several transcript variants encoding different isoforms.

**HKLK3 Antibody (C234) - References**

Kim, S.T., et al. Prostate 70(16):1729-1738(2010)  
Kuasne, H., et al. Cancer Invest. 28(9):917-924(2010)  
Bailey, S.D., et al. Diabetes Care 33(10):2250-2253(2010)  
Sarrats, A., et al. OMICS 14(4):465-474(2010)  
Gallagher, D.J., et al. Clin. Cancer Res. 16(10):2819-2832(2010)