

**Phospho-Ser9 GSK3 $\beta$  Antibody**  
**Affinity purified rabbit polyclonal antibody**  
**Catalog # AN1117**

**Specification**

---

**Phospho-Ser9 GSK3 $\beta$  Antibody - Product Information**

Application	WB
Primary Accession	<a href="#">P18266</a>
Reactivity	Rat
Predicted	Bovine, Chicken, Human, Mouse, Monkey, Xenopus, Zebrafish
Host	Rabbit
Clonality	polyclonal
Calculated MW	46 KDa

**Phospho-Ser9 GSK3 $\beta$  Antibody - Additional Information**

Gene ID	84027
Gene Name	GSK3B
<b>Other Names</b>	
Glycogen synthase kinase-3 beta, GSK-3 beta, Factor A, FA, Serine/threonine-protein kinase GSK3B, Gsk3b	

**Target/Specificity**

Synthetic phospho-peptide corresponding to amino acid residues surrounding Ser9 conjugated to KLH.

**Dilution**

WB~~ 1:1000

**Format**

Prepared from rabbit serum by affinity purification via sequential chromatography on phospho- and dephosphopeptide affinity columns.

**Antibody Specificity**

Specific for the ~46k GSK3 $\beta$  protein phosphorylated at Ser9. Also weakly labels the ~51k GSK3 $\alpha$  band due to the high degree of homology between the 2 subunits. Immunolabeling is blocked by the phosphopeptide used as antigen but not by the corresponding dephosphopeptide

**Storage**

Maintain refrigerated at 2-8°C for up to 6 months. For long term storage store at -20°C in small aliquots to prevent freeze-thaw cycles.

**Precautions**

Phospho-Ser9 GSK3 $\beta$  Antibody is for research use only and not for use in diagnostic or therapeutic procedures.

**Shipping**

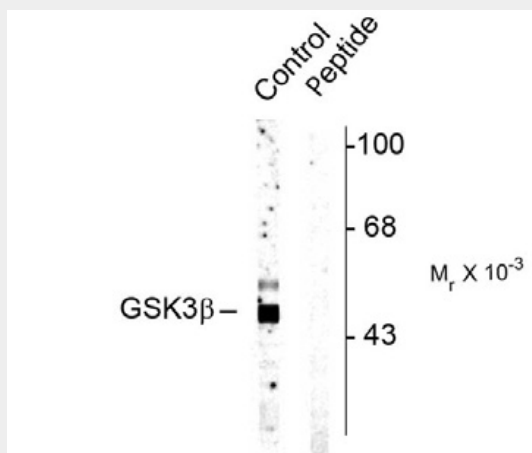
Blue Ice

## Phospho-Ser9 GSK3 $\beta$ Antibody - Protocols

Provided below are standard protocols that you may find useful for product applications.

- [Western Blot](#)
- [Blocking Peptides](#)
- [Dot Blot](#)
- [Immunohistochemistry](#)
- [Immunofluorescence](#)
- [Immunoprecipitation](#)
- [Flow Cytometry](#)
- [Cell Culture](#)

## Phospho-Ser9 GSK3 $\beta$ Antibody - Images



Western blot of rat cortex lysate showing specific immunolabeling of the ~46 k GSK3 $\beta$  protein phosphorylated at Ser9 (control). Immunolabeling is blocked by the phospho-peptide (peptide) used as antigen but not by the corresponding dephosphopeptide (not shown).

## Phospho-Ser9 GSK3 $\beta$ Antibody - Background

Glycogen synthase kinase 3 (GSK3) is a serine/threonine kinase that is involved in the regulation of many signaling pathways. To date, 2 isoforms have been identified: GSK3 $\alpha$  and GSK3 $\beta$ . Specifically, GSK3 $\beta$  has been shown to play a key inhibitory role in both the insulin and Wnt signaling pathways (Papkoff and Aikawa 1998). It has been suggested that Ser9 phosphorylation underlies the inhibition of GSK3 $\beta$  by insulin (Sutherland et al., 1993).

## Phospho-Ser9 GSK3 $\beta$ Antibody - References

Sutherland C, Leighton IA, Cohen P (1993) Inactivation of glycogen synthase kinase 3 beta by phosphorylation: new kinase connections in insulin and growth factor signaling. *Biochem J.* Nov 15; 296 (Pt. 1):15-9.

Papkoff J, Aikawa M (1998) WNT-1 and HGF regulate GSK3b activity and beta catenin signaling in mammary epithelial cells. *Biochem Biophys Res Commun.* Jun 29;247(3):851-8.