

Prox1 Antibody
Mouse monoclonal antibody
Catalog # AN1179**Specification**

Prox1 Antibody - Product Information

Application	WB
Primary Accession	Q92786
Reactivity	Chicken, Human, Mouse, Rat
Host	mouse
Clonality	monoclonal
Isotype	IgG1

Prox1 Antibody - Additional Information

Gene ID	5629
Gene Name	PROX1
Other Names	
Prospero homeobox protein 1, Homeobox prospero-like protein PROX1, PROX-1, PROX1	

Target/Specificity

Recombinant human Prox1 protein.

Dilution

WB~~ 1:1000

Format

Protein G purified culture supernatant.

Antibody Specificity

Specifically labels prox1 in formalin-fixed, paraffin-embedded tissue.

Storage

Maintain refrigerated at 2-8°C for up to 6 months. For long term storage store at -20°C in small aliquots to prevent freeze-thaw cycles.

Precautions

Prox1 Antibody is for research use only and not for use in diagnostic or therapeutic procedures.

Shipping

Blue Ice

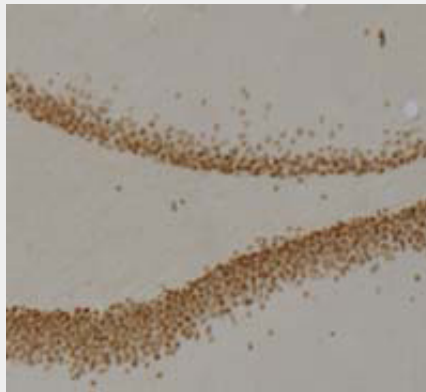
Prox1 Antibody - Protocols

Provided below are standard protocols that you may find useful for product applications.

- [Western Blot](#)
- [Blocking Peptides](#)

- [Dot Blot](#)
- [Immunohistochemistry](#)
- [Immunofluorescence](#)
- [Immunoprecipitation](#)
- [Flow Cytometry](#)
- [Cell Culture](#)

Prox1 Antibody - Images



Immunohistochemical staining of rat dentate gyrus showing specific immunolabeling of the prox1 protein. Photo courtesy of Justin Kievits and Teresa Milner, Weill Cornell Medical College.

Prox1 Antibody - Background

Prox1 (Prospero-related homeobox 1) is a divergent homeogene that regulates cell proliferation, fate determination and differentiation during vertebrate embryonic development. The protein is expressed in the developing lens and is also detected in embryonic brain, lung, liver and kidney; while in adult it is more abundant in heart and liver than in brain, skeletal muscle, kidney and pancreas (Chen et al., 2006). Prox1 is thought to play a fundamental role in early development of the CNS and may regulate gene expression and development of postmitotic undifferentiated young neurons (Misra et al., 2008)

Prox1 Antibody - References

Xiaoren Chen, Tapan P. Patel, William J. Cain, Melinda K. Duncan. Production of monoclonal antibodies against Prox1. *Hybridoma* (2006) Feb;25(1):27-33.
Misra K, Gui H, Matise MP (2008) Prox1 regulates a transitory state for interneuron neurogenesis in the spinal cord. *Dev Dyn* 237(2):393-402.