

**Park7 (DJ-1) Antibody**  
**Mouse monoclonal antibody**  
**Catalog # AN1214****Specification**

---

**Park7 (DJ-1) Antibody - Product Information**

Application	FC, WB, IF
Primary Accession	<a href="#">O88767</a>
Reactivity	Bovine, Human, Mouse, Rat
Host	Mouse
Clonality	monoclonal
Isotype	IgG1
Calculated MW	21 KDa

**Park7 (DJ-1) Antibody - Additional Information**

Gene ID	117287
Gene Name	PARK7
<b>Other Names</b>	
Protein DJ-1, 34--, Contraception-associated protein 1, Protein CAP1, Fertility protein SP22, Parkinson disease protein 7 homolog, Park7, Cap1	

**Target/Specificity**

Full length recombinant human Park7 expressed in and purified from E. coli.

**Dilution**

FC~~1:500  
WB~~ 1:2000  
IF~~ 1:500

**Format**

Affinity purified from tissue culture supernatant

**Antibody Specificity**

Specific for the ~21k park7 protein

**Storage**

Maintain refrigerated at 2-8°C for up to 6 months. For long term storage store at -20°C in small aliquots to prevent freeze-thaw cycles.

**Precautions**

Park7 (DJ-1) Antibody is for research use only and not for use in diagnostic or therapeutic procedures.

**Shipping**

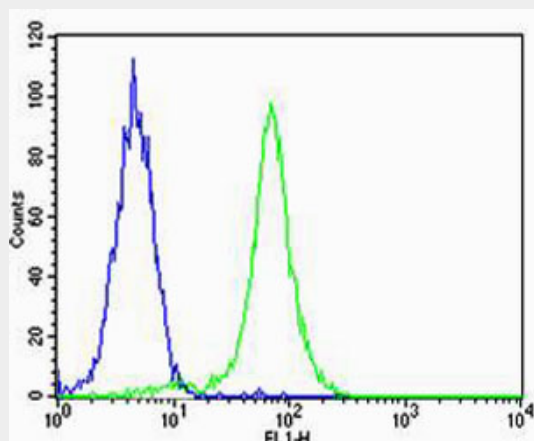
Blue Ice

**Park7 (DJ-1) Antibody - Protocols**

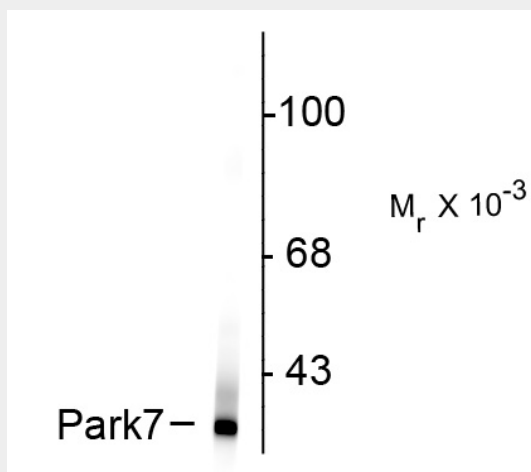
Provided below are standard protocols that you may find useful for product applications.

- [Western Blot](#)
- [Blocking Peptides](#)
- [Dot Blot](#)
- [Immunohistochemistry](#)
- [Immunofluorescence](#)
- [Immunoprecipitation](#)
- [Flow Cytometry](#)
- [Cell Culture](#)

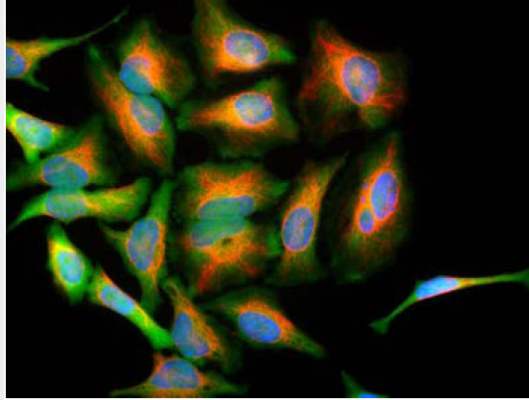
#### **Park7 (DJ-1) Antibody - Images**



Flow cytometric analysis of Hela cells using Park7 (DJ-1) Antibody(green, Cat#AN1214) compared to an isotype control of mouse IgG1(blue). AN1214 was diluted at 1:500 dilution. An Alexa Fluor® 488 goat anti-mouse IgG at 1:400 dilution was used as the secondary antibody.



Western blot of rat kidney lysate showing specific immunolabeling of the ~21k park7 protein.



Immunofluorescence of HeLa cells stained with anti-park7 (green) showing strong cytoplasmic staining and anti-vimentin antibody (red).

#### **Park7 (DJ-1) Antibody - Background**

Park7, also known as DJ-1, is a member of the peptidase C56 family of proteins and is thought to function as a molecular chaperone. Mutations in park7 have been associated with autosomal recessive, early onset Parkinson's disease (Bonifati et al., 2003). Recently, park7 has been shown to inhibit microtubule associated protein 1B aggregation thus leading to neuronal apoptosis (Wang et al., 2011).

#### **Park7 (DJ-1) Antibody - References**

Bonifati V, Rizzu P, van Baren MJ, Schaap O, Breedveld GJ, Krieger E, Dekker MC, Squitieri F, Ibanez P, Joosse M, van Dongen JW, Vanacore N, van Swieten JC, Brice A, Meco G, van Duijn CM, Oostra BA, Heutink P. (2003) Mutations in the DJ-1 gene associated with autosomal recessive early-onset parkinsonism. *Science*. Jan 10;299(5604):256-9

Wang Z, Zhang Y, Zhang S, Guo Q, Tan Y, Wang X, Xiong R, Ding J, Chen S. (2011) DJ-1 can inhibit microtubule associated protein 1 B formed aggregates. *Mol Neurodegener*. Jun 6;6:38