

**Tau Antibody**  
**Chicken polyclonal antibody**  
**Catalog # AN1240****Specification**

---

**Tau Antibody - Product Information**

Application	WB, IF
Primary Accession	<a href="#">P10636</a>
Reactivity	Human, Rat
Host	Chicken
Clonality	polyclonal

**Tau Antibody - Additional Information**

Gene ID	4137
Gene Name	MAPT

**Other Names**

Microtubule-associated protein tau, Neurofibrillary tangle protein, Paired helical filament-tau, PHF-tau, MAPT, MAPTL, MTBT1, TAU

**Target/Specificity**

Recombinant full length human tau expressed in and purified from E.Coli.

**Dilution**

WB~~ 1:10000

IF~~ 1:1000

**Format**

Total IgY fraction

**Antibody Specificity**

Specific for the ~48, 65 & 75k tau isoforms.

**Storage**

Maintain refrigerated at 2-8°C for up to 6 months. For long term storage store at -20°C in small aliquots to prevent freeze-thaw cycles.

**Precautions**

Tau Antibody is for research use only and not for use in diagnostic or therapeutic procedures.

**Shipping**

Blue Ice

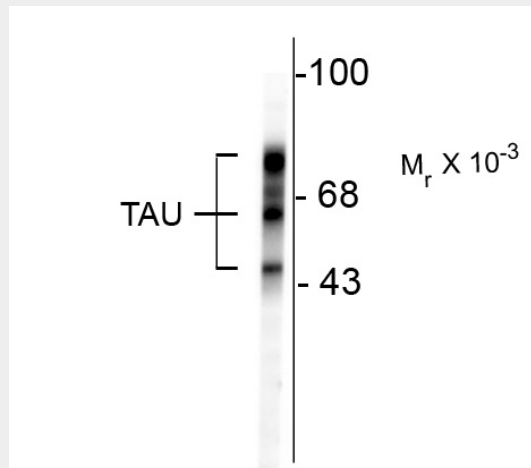
**Tau Antibody - Protocols**

Provided below are standard protocols that you may find useful for product applications.

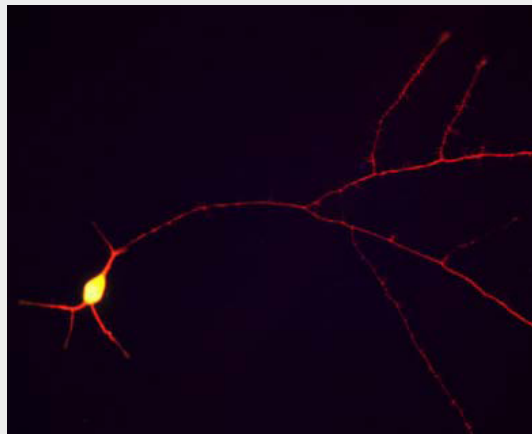
- [Western Blot](#)

- [Blocking Peptides](#)
- [Dot Blot](#)
- [Immunohistochemistry](#)
- [Immunofluorescence](#)
- [Immunoprecipitation](#)
- [Flow Cytometry](#)
- [Cell Culture](#)

## Tau Antibody - Images



Western blot of rat cortex lysate showing specific immunolabeling of the ~48, 65 & 75k tau isoforms.



Immunofluorescence of cultured rat hippocampal neurons showing staining of tau in red along the neuronal processes.

## Tau Antibody - Background

Tau is a key microtubule-associated protein that plays an important role in the formation of microtubules in axons (Binder et al. 1985). Six tau isoforms have been identified as products of a single gene produced by alternative mRNA splicing (Goedert 1990). Tau mutations have been implicated in many neurodegenerative disorders such as Alzheimer's disease (AD), Pick's disease and progressive supranuclear palsy.

## Tau Antibody - References

Binder LI, Frankfurter A, Rebhun LI (1985) The distribution of tau in the mammalian central nervous

system. J Cell Bio Oct; 101(4):1371-8.

Goedert M. and Jakes R. (1990) Expression of separate isoforms of human tau protein: correlation with the tau pattern in brain and effects on tubulin polymerization. EMBO J 9, 4225-4230.