

RTL1 Antibody (C-term)
Affinity Purified Rabbit Polyclonal Antibody (Pab)
Catalog # AP10002b**Specification**

RTL1 Antibody (C-term) - Product Information

Application	WB,E
Primary Accession	A6NKG5
Other Accession	XP_001716834.1
Reactivity	Human
Host	Rabbit
Clonality	Polyclonal
Isotype	Rabbit IgG
Calculated MW	155048
Antigen Region	1330-1358

RTL1 Antibody (C-term) - Additional Information**Gene ID** 388015**Other Names**

Retrotransposon-like protein 1, Mammalian retrotransposon derived protein 1, Paternally expressed gene 11 protein, Retrotransposon-derived protein PEG11, RTL1, MAR1, MART1, PEG11

Target/Specificity

This RTL1 antibody is generated from rabbits immunized with a KLH conjugated synthetic peptide between 1330-1358 amino acids from the C-terminal region of human RTL1.

Dilution

WB~~1:1000

Format

Purified polyclonal antibody supplied in PBS with 0.09% (W/V) sodium azide. This antibody is purified through a protein A column, followed by peptide affinity purification.

Storage

Maintain refrigerated at 2-8°C for up to 2 weeks. For long term storage store at -20°C in small aliquots to prevent freeze-thaw cycles.

Precautions

RTL1 Antibody (C-term) is for research use only and not for use in diagnostic or therapeutic procedures.

RTL1 Antibody (C-term) - Protein Information**Name** RTL1**Synonyms** MAR1, MART1, PEG11

Function Plays an essential role in capillaries endothelial cells for the maintenance of feto-maternal interface and for development of the placenta.

Cellular Location

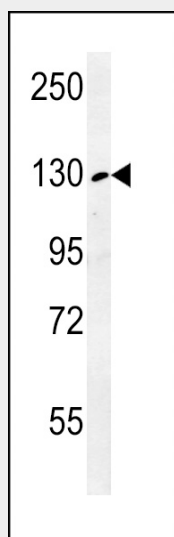
Membrane; Multi-pass membrane protein

RTL1 Antibody (C-term) - Protocols

Provided below are standard protocols that you may find useful for product applications.

- [Western Blot](#)
- [Blocking Peptides](#)
- [Dot Blot](#)
- [Immunohistochemistry](#)
- [Immunofluorescence](#)
- [Immunoprecipitation](#)
- [Flow Cytometry](#)
- [Cell Culture](#)

RTL1 Antibody (C-term) - Images



RTL1 Antibody (C-term) (Cat. #AP10002b) western blot analysis in K562 cell line lysates (35ug/lane). This demonstrates the RTL1 antibody detected the RTL1 protein (arrow).