

LCE2B Antibody (C-term)
Affinity Purified Rabbit Polyclonal Antibody (Pab)
Catalog # AP10027B**Specification**

LCE2B Antibody (C-term) - Product Information

Application	WB, FC,E
Primary Accession	O14633
Other Accession	Q5TA82 , Q5TA81 , NP_055172.1
Reactivity	Human
Host	Rabbit
Clonality	Polyclonal
Isotype	Rabbit IgG
Calculated MW	11219
Antigen Region	61-90

LCE2B Antibody (C-term) - Additional Information**Gene ID** 26239**Other Names**

Late cornified envelope protein 2B, Late envelope protein 10, Skin-specific protein Xp5, Small proline-rich-like epidermal differentiation complex protein 1B, LCE2B, LEP10, SPRL1B, XP5

Target/Specificity

This LCE2B antibody is generated from rabbits immunized with a KLH conjugated synthetic peptide between 61-90 amino acids from the C-terminal region of human LCE2B.

Dilution

WB~~1:1000
FC~~1:10~50

Format

Purified polyclonal antibody supplied in PBS with 0.09% (W/V) sodium azide. This antibody is purified through a protein A column, followed by peptide affinity purification.

Storage

Maintain refrigerated at 2-8°C for up to 2 weeks. For long term storage store at -20°C in small aliquots to prevent freeze-thaw cycles.

Precautions

LCE2B Antibody (C-term) is for research use only and not for use in diagnostic or therapeutic procedures.

LCE2B Antibody (C-term) - Protein Information**Name** LCE2B

Synonyms LEP10, SPRL1B, XP5

Function Precursors of the cornified envelope of the stratum corneum.

Tissue Location

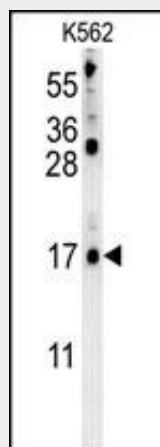
Skin-specific. Expression was readily detected in adult trunk skin, adult arm skin, fetal skin, penial skin, vulva, esophagus and tongue. Not expressed in the cervix, rectum, lung, colon, or placenta.

LCE2B Antibody (C-term) - Protocols

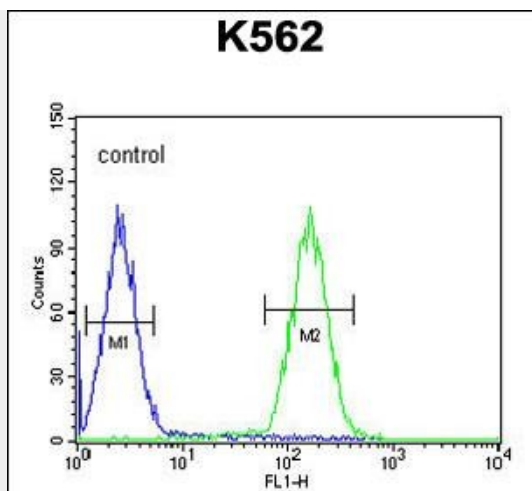
Provided below are standard protocols that you may find useful for product applications.

- [Western Blot](#)
- [Blocking Peptides](#)
- [Dot Blot](#)
- [Immunohistochemistry](#)
- [Immunofluorescence](#)
- [Immunoprecipitation](#)
- [Flow Cytometry](#)
- [Cell Culture](#)

LCE2B Antibody (C-term) - Images



LCE2B Antibody (C-term) (Cat. #AP10027b) western blot analysis in K562 cell line lysates (35ug/lane). This demonstrates the LCE2B antibody detected the LCE2B protein (arrow).



LCE2B Antibody (C-term) (Cat. #AP10027b) flow cytometric analysis of K562 cells (right histogram) compared to a negative control cell (left histogram). FITC-conjugated goat-anti-rabbit secondary antibodies were used for the analysis.