

**CHCHD2 Antibody (Center)**  
**Affinity Purified Rabbit Polyclonal Antibody (Pab)**  
**Catalog # AP10055c**

**Specification**

---

**CHCHD2 Antibody (Center) - Product Information**

Application	WB, IHC-P, FC,E
Primary Accession	<a href="#">O9Y6H1</a>
Other Accession	<a href="#">NP_057223.1</a>
Reactivity	Human
Host	Rabbit
Clonality	Polyclonal
Isotype	Rabbit IgG
Calculated MW	15513
Antigen Region	74-103

**CHCHD2 Antibody (Center) - Additional Information**

**Gene ID** 51142

**Other Names**

Coiled-coil-helix-coiled-coil-helix domain-containing protein 2, mitochondrial, Aging-associated gene 10 protein, HCV NS2 trans-regulated protein, NS2TP, CHCHD2, C7orf17

**Target/Specificity**

This CHCHD2 antibody is generated from rabbits immunized with a KLH conjugated synthetic peptide between 74-103 amino acids from the Central region of human CHCHD2.

**Dilution**

WB~~1:1000  
IHC-P~~1:50~100  
FC~~1:10~50

**Format**

Purified polyclonal antibody supplied in PBS with 0.09% (W/V) sodium azide. This antibody is purified through a protein A column, followed by peptide affinity purification.

**Storage**

Maintain refrigerated at 2-8°C for up to 2 weeks. For long term storage store at -20°C in small aliquots to prevent freeze-thaw cycles.

**Precautions**

CHCHD2 Antibody (Center) is for research use only and not for use in diagnostic or therapeutic procedures.

**CHCHD2 Antibody (Center) - Protein Information**

**Name** CHCHD2

## Synonyms C7orf17

**Function** Transcription factor. Binds to the oxygen responsive element of COX4I2 and activates its transcription under hypoxia conditions (4% oxygen), as well as normoxia conditions (20% oxygen) (PubMed:[23303788](#)).

## Cellular Location

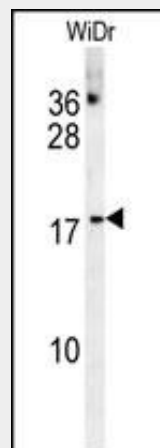
Nucleus. Mitochondrion. Mitochondrion intermembrane space. Note=Mainly localized in the intermembrane space.

## CHCHD2 Antibody (Center) - Protocols

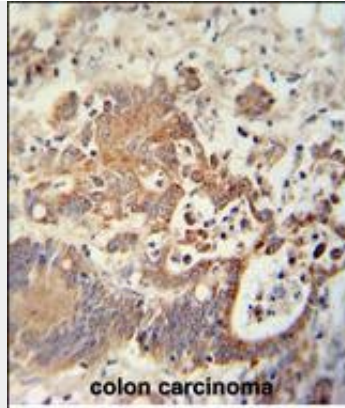
Provided below are standard protocols that you may find useful for product applications.

- [Western Blot](#)
- [Blocking Peptides](#)
- [Dot Blot](#)
- [Immunohistochemistry](#)
- [Immunofluorescence](#)
- [Immunoprecipitation](#)
- [Flow Cytometry](#)
- [Cell Culture](#)

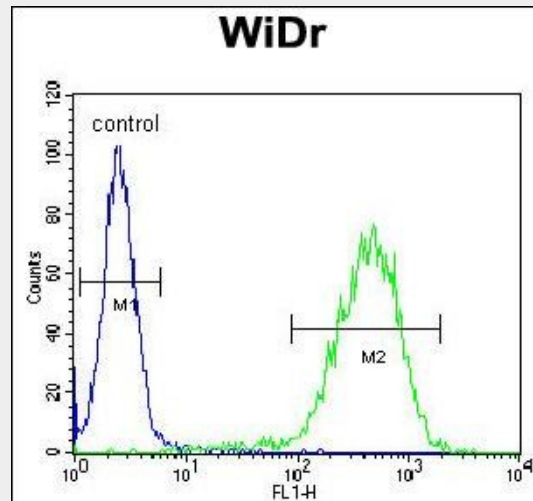
## CHCHD2 Antibody (Center) - Images



CHCHD2 Antibody (Center) (Cat. #AP10055c) western blot analysis in WiDr cell line lysates (35ug/lane). This demonstrates the CHCHD2 antibody detected the CHCHD2 protein (arrow).



CHCHD2 antibody (Center) (Cat. #AP10055c) immunohistochemistry analysis in formalin fixed and paraffin embedded human colon carcinoma followed by peroxidase conjugation of the secondary antibody and DAB staining. This data demonstrates the use of the CHCHD2 antibody (Center) for immunohistochemistry. Clinical relevance has not been evaluated.



CHCHD2 Antibody (Center) (Cat. #AP10055c) flow cytometric analysis of WiDr cells (right histogram) compared to a negative control cell (left histogram). FITC-conjugated goat-anti-rabbit secondary antibodies were used for the analysis.

#### CHCHD2 Antibody (Center) - Citations

- [CHCHD2 is a potential prognostic factor for NSCLC and is associated with HIF-1a expression](#)