

**LOC552889 Antibody (Center)**  
**Affinity Purified Rabbit Polyclonal Antibody (Pab)**  
**Catalog # AP10056c****Specification**

---

**LOC552889 Antibody (Center) - Product Information**

Application	WB, FC,E
Primary Accession	<a href="#">O96GX2</a>
Other Accession	<a href="#">NP_001129734.1</a>
Reactivity	Human
Host	Rabbit
Clonality	Polyclonal
Isotype	Rabbit IgG
Calculated MW	10771
Antigen Region	32-62

**LOC552889 Antibody (Center) - Additional Information****Gene ID** 552889**Other Names**

Putative ataxin-7-like protein 3B, ATXN7L3B

**Target/Specificity**

This LOC552889 antibody is generated from rabbits immunized with a KLH conjugated synthetic peptide between 32-62 amino acids from the Central region of human LOC552889.

**Dilution**

WB~~1:1000

FC~~1:10~50

**Format**

Purified polyclonal antibody supplied in PBS with 0.09% (W/V) sodium azide. This antibody is purified through a protein A column, followed by peptide affinity purification.

**Storage**

Maintain refrigerated at 2-8°C for up to 2 weeks. For long term storage store at -20°C in small aliquots to prevent freeze-thaw cycles.

**Precautions**

LOC552889 Antibody (Center) is for research use only and not for use in diagnostic or therapeutic procedures.

**LOC552889 Antibody (Center) - Protein Information****Name** ATXN7L3B**Function** By binding to ENY2, interferes with the nuclear functions of the deubiquitinase (DUB)

module of the SAGA complex which consists of ENY2, ATXN7, ATXN7L3 and the histone deubiquitinating component USP22. Affects USP22 DUB activity toward histones indirectly by changing the subcellular distribution of ENY2 and altering ENY2 availability for ATXN7L3 interaction. Regulates H2B monoubiquitination (H2Bub1) levels through cytoplasmic sequestration of ENY2 resulting in loss of nuclear ENY2-ATXN7L3 association which destabilizes ATXN7L3. Affects protein expression levels of ENY2 and ATXN7L3.

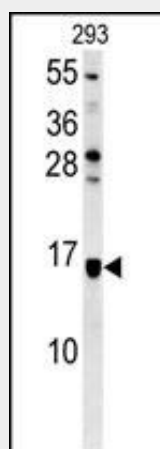
**Cellular Location**

Cytoplasm.

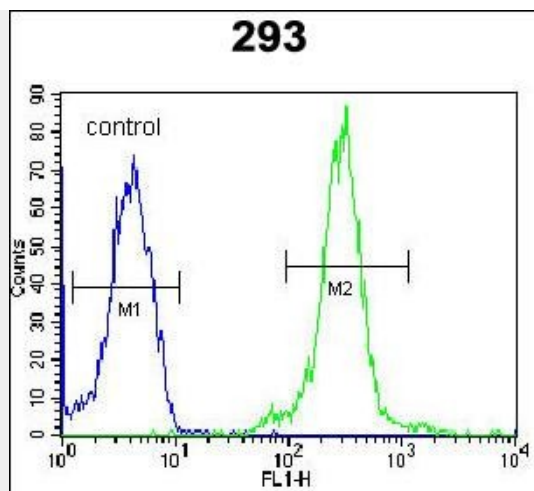
**LOC552889 Antibody (Center) - Protocols**

Provided below are standard protocols that you may find useful for product applications.

- [Western Blot](#)
- [Blocking Peptides](#)
- [Dot Blot](#)
- [Immunohistochemistry](#)
- [Immunofluorescence](#)
- [Immunoprecipitation](#)
- [Flow Cytometry](#)
- [Cell Culture](#)

**LOC552889 Antibody (Center) - Images**

LOC552889 Antibody (Center) (Cat. #AP10056c) western blot analysis in 293 cell line lysates (35ug/lane). This demonstrates the LOC552889 antibody detected the LOC552889 protein (arrow).



LOC552889 Antibody (Center) (Cat. #AP10056c) flow cytometric analysis of 293 cells (right histogram) compared to a negative control cell (left histogram). FITC-conjugated goat-anti-rabbit secondary antibodies were used for the analysis.