

APOL6 Antibody (Center)
Affinity Purified Rabbit Polyclonal Antibody (Pab)
Catalog # AP10113c**Specification**

APOL6 Antibody (Center) - Product Information

Application	WB, IHC-P, FC,E
Primary Accession	O9BWW8
Other Accession	NP_085144.1
Reactivity	Human
Host	Rabbit
Clonality	Polyclonal
Isotype	Rabbit IgG
Calculated MW	38128
Antigen Region	126-155

APOL6 Antibody (Center) - Additional Information**Gene ID** 80830**Other Names**

Apolipoprotein L6, Apolipoprotein L-VI, ApoL-VI, APOL6

Target/Specificity

This APOL6 antibody is generated from rabbits immunized with a KLH conjugated synthetic peptide between 126-155 amino acids from the Central region of human APOL6.

Dilution

WB~~1:1000
IHC-P~~1:50~100
FC~~1:10~50

Format

Purified polyclonal antibody supplied in PBS with 0.09% (W/V) sodium azide. This antibody is purified through a protein A column, followed by peptide affinity purification.

Storage

Maintain refrigerated at 2-8°C for up to 2 weeks. For long term storage store at -20°C in small aliquots to prevent freeze-thaw cycles.

Precautions

APOL6 Antibody (Center) is for research use only and not for use in diagnostic or therapeutic procedures.

APOL6 Antibody (Center) - Protein Information**Name** APOL6

Function May affect the movement of lipids in the cytoplasm or allow the binding of lipids to organelles.

Cellular Location

Cytoplasm.

Tissue Location

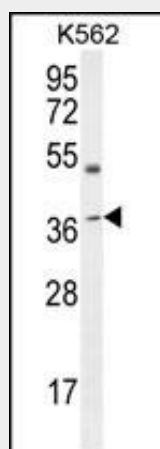
Widely expressed; highly expressed in the uterus, fetal brain and spinal cord, also detected in heart, liver, lung, colon, spleen, thymus, prostate, placenta, adrenal gland, salivary and mammary gland

APOL6 Antibody (Center) - Protocols

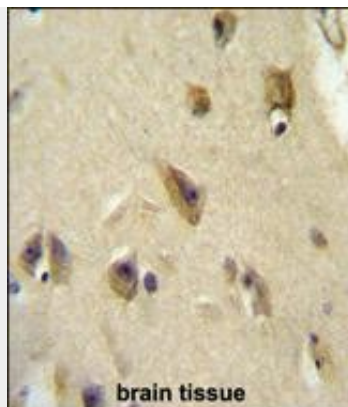
Provided below are standard protocols that you may find useful for product applications.

- [Western Blot](#)
- [Blocking Peptides](#)
- [Dot Blot](#)
- [Immunohistochemistry](#)
- [Immunofluorescence](#)
- [Immunoprecipitation](#)
- [Flow Cytometry](#)
- [Cell Culture](#)

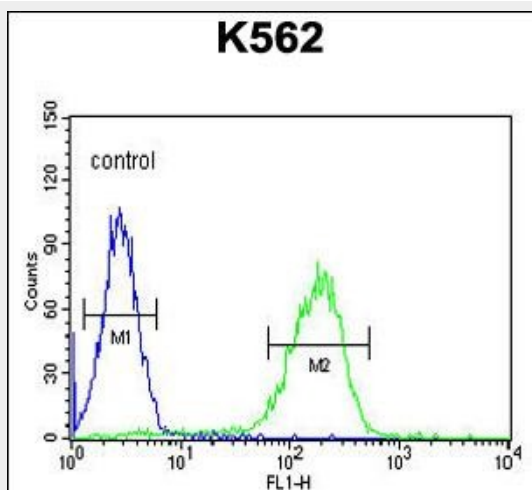
APOL6 Antibody (Center) - Images



APOL6 Antibody (Center) (Cat. #AP10113c) western blot analysis in K562 cell line lysates (35ug/lane). This demonstrates the APOL6 antibody detected the APOL6 protein (arrow).



APOL6 Antibody (Center) (Cat. #AP10113c) immunohistochemistry analysis in formalin fixed and paraffin embedded human brain tissue followed by peroxidase conjugation of the secondary antibody and DAB staining. This data demonstrates the use of the APOL6 Antibody (Center) for immunohistochemistry. Clinical relevance has not been evaluated.



APOL6 Antibody (Center) (Cat. #AP10113c) flow cytometric analysis of K562 cells (right histogram) compared to a negative control cell (left histogram). FITC-conjugated goat-anti-rabbit secondary antibodies were used for the analysis.

APOL6 Antibody (Center) - Background

This gene is a member of the apolipoprotein L gene family. The encoded protein is found in the cytoplasm, where it may affect the movement of lipids or allow the binding of lipids to organelles.

APOL6 Antibody (Center) - References

- Smith, E.E., et al. Genome Res. 19(5):850-858(2009)
- Liu, Y.L., et al. Biol. Psychiatry 64(9):789-796(2008)
- Liu, Z., et al. Mol. Cancer Res. 3(1):21-31(2005)
- Collins, J.E., et al. Genome Biol. 5 (10), R84 (2004) :
- Clark, H.F., et al. Genome Res. 13(10):2265-2270(2003)