

**GTPBP2 Antibody (C-term)**  
**Affinity Purified Rabbit Polyclonal Antibody (Pab)**  
**Catalog # AP10220b****Specification**

---

**GTPBP2 Antibody (C-term) - Product Information**

Application	WB, IHC-P, FC,E
Primary Accession	<a href="#">O9BX10</a>
Other Accession	<a href="#">O3UJK4</a> , <a href="#">NP_061969.3</a>
Reactivity	Human, Hamster, Mouse
Host	Rabbit
Clonality	Polyclonal
Isotype	Rabbit IgG
Calculated MW	65768
Antigen Region	536-564

**GTPBP2 Antibody (C-term) - Additional Information****Gene ID** 54676**Other Names**

GTP-binding protein 2, GTPBP2 {ECO:0000312|EMBL:CAC362691}

**Target/Specificity**

This GTPBP2 antibody is generated from rabbits immunized with a KLH conjugated synthetic peptide between 536-564 amino acids from the C-terminal region of human GTPBP2.

**Dilution**

WB~~1:1000  
IHC-P~~1:50~100  
FC~~1:10~50

**Format**

Purified polyclonal antibody supplied in PBS with 0.09% (W/V) sodium azide. This antibody is purified through a protein A column, followed by peptide affinity purification.

**Storage**

Maintain refrigerated at 2-8°C for up to 2 weeks. For long term storage store at -20°C in small aliquots to prevent freeze-thaw cycles.

**Precautions**

GTPBP2 Antibody (C-term) is for research use only and not for use in diagnostic or therapeutic procedures.

**GTPBP2 Antibody (C-term) - Protein Information****Name** GTPBP2 {ECO:0000312|EMBL:CAC36269.1}

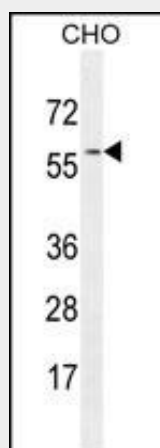
**Tissue Location**

Predominantly expressed in thymus, spleen, and testis. Expressed at lower levels in brain, lung, kidney, and ovary

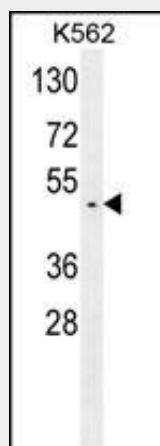
**GTPBP2 Antibody (C-term) - Protocols**

Provided below are standard protocols that you may find useful for product applications.

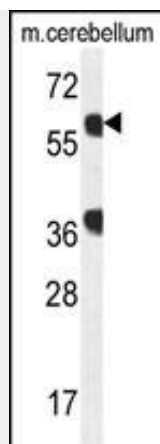
- [Western Blot](#)
- [Blocking Peptides](#)
- [Dot Blot](#)
- [Immunohistochemistry](#)
- [Immunofluorescence](#)
- [Immunoprecipitation](#)
- [Flow Cytometry](#)
- [Cell Culture](#)

**GTPBP2 Antibody (C-term) - Images**

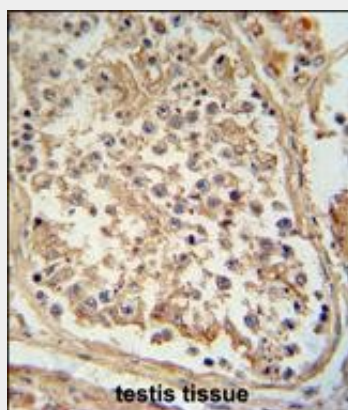
GTPBP2 Antibody (C-term) (Cat. #AP10220b) western blot analysis in CHO cell line lysates (35ug/lane). This demonstrates the GTPBP2 antibody detected the GTPBP2 protein (arrow).



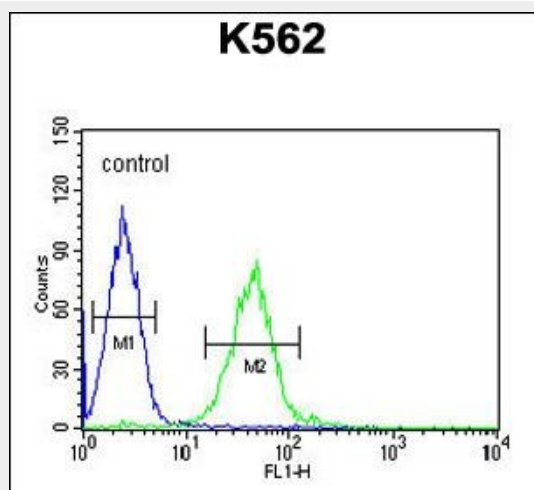
GTPBP2 Antibody (C-term) (Cat. #AP10220b) western blot analysis in K562 cell line lysates (35ug/lane). This demonstrates the GTPBP2 antibody detected the GTPBP2 protein (arrow).



GTPBP2 Antibody (C-term) (Cat. #AP10220b) western blot analysis in mouse cerebellum tissue lysates (35ug/lane). This demonstrates the GTPBP2 antibody detected the GTPBP2 protein (arrow).



GTPBP2 antibody (C-term) (Cat. #AP10220b) immunohistochemistry analysis in formalin fixed and paraffin embedded human testis tissue followed by peroxidase conjugation of the secondary antibody and DAB staining. This data demonstrates the use of the GTPBP2 antibody (C-term) for immunohistochemistry. Clinical relevance has not been evaluated.



GTPBP2 Antibody (C-term) (Cat. #AP10220b) flow cytometric analysis of K562 cells (right histogram) compared to a negative control cell (left histogram). FITC-conjugated goat-anti-rabbit secondary antibodies were used for the analysis.

#### GTPBP2 Antibody (C-term) - Background

GTP-binding proteins, or G proteins, constitute a superfamily capable of binding GTP or GDP. G proteins are activated by binding GTP and are inactivated by hydrolyzing GTP to GDP. This general mechanism enables G proteins to perform a wide range of biologic activities.

#### **GTPBP2 Antibody (C-term) - References**

Mungall, A.J., et al. Nature 425(6960):805-811(2003)  
Watanabe, M., et al. Gene 256 (1-2), 51-58 (2000) :  
Kudo, H., et al. Biochem. Biophys. Res. Commun. 272(2):456-465(2000)