

**FBXW12 Antibody (C-term)**  
**Affinity Purified Rabbit Polyclonal Antibody (Pab)**  
**Catalog # AP10268b**

**Specification**

---

**FBXW12 Antibody (C-term) - Product Information**

Application	WB, IHC-P, FC,E
Primary Accession	<a href="#">O6X9E4</a>
Other Accession	<a href="#">NP_001153399.1</a> , <a href="#">NP_001153401.1</a>
Reactivity	Human
Host	Rabbit
Clonality	Polyclonal
Isotype	Rabbit IgG
Calculated MW	53056
Antigen Region	291-320

**FBXW12 Antibody (C-term) - Additional Information**

**Gene ID** 285231

**Other Names**

F-box/WD repeat-containing protein 12, F-box and WD-40 domain-containing protein 12, F-box only protein 35, FBXW12, FBW12, FBXO12, FBXO35

**Target/Specificity**

This FBXW12 antibody is generated from rabbits immunized with a KLH conjugated synthetic peptide between 291-320 amino acids from the C-terminal region of human FBXW12.

**Dilution**

WB~~1:1000  
IHC-P~~1:50~100  
FC~~1:10~50

**Format**

Purified polyclonal antibody supplied in PBS with 0.09% (W/V) sodium azide. This antibody is purified through a protein A column, followed by peptide affinity purification.

**Storage**

Maintain refrigerated at 2-8°C for up to 2 weeks. For long term storage store at -20°C in small aliquots to prevent freeze-thaw cycles.

**Precautions**

FBXW12 Antibody (C-term) is for research use only and not for use in diagnostic or therapeutic procedures.

**FBXW12 Antibody (C-term) - Protein Information**

**Name** FBXW12

**Synonyms** FBW12, FBXO12, FBXO35

**Function** Substrate-recognition component of the SCF (SKP1-CUL1-F-box protein)-type E3 ubiquitin ligase complex (PubMed:[26171402](#)). Promotes degradation of interleukin-22 receptor subunit IL22RA1 in resting and IL22-stimulated conditions by facilitating its ubiquitination (PubMed:[26171402](#)). Functions as a cell growth suppressor (PubMed:[26171402](#)).

**Tissue Location**

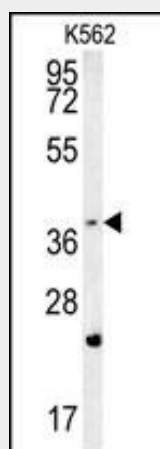
Ubiquitously expressed.

**FBXW12 Antibody (C-term) - Protocols**

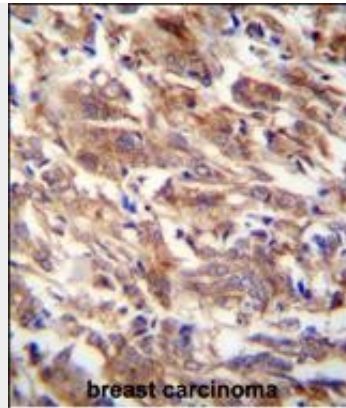
Provided below are standard protocols that you may find useful for product applications.

- [Western Blot](#)
- [Blocking Peptides](#)
- [Dot Blot](#)
- [Immunohistochemistry](#)
- [Immunofluorescence](#)
- [Immunoprecipitation](#)
- [Flow Cytometry](#)
- [Cell Culture](#)

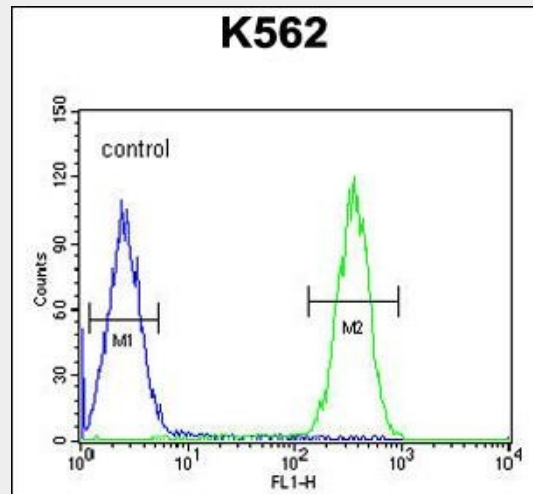
**FBXW12 Antibody (C-term) - Images**



FBXW12 Antibody (C-term) (Cat. #AP10268b) western blot analysis in K562 cell line lysates (35ug/lane). This demonstrates the FBXW12 antibody detected the FBXW12 protein (arrow).



FBXW12 antibody(C-term) (Cat. #AP10268b) immunohistochemistry analysis in formalin fixed and paraffin embedded human breast carcinoma followed by peroxidase conjugation of the secondary antibody and DAB staining. This data demonstrates the use of the FBXW12 antibody(C-term) for immunohistochemistry. Clinical relevance has not been evaluated.



FBXW12 Antibody (C-term) (Cat. #AP10268b) flow cytometric analysis of K562 cells (right histogram) compared to a negative control cell (left histogram).FITC-conjugated goat-anti-rabbit secondary antibodies were used for the analysis.

### FBXW12 Antibody (C-term) - Background

Members of the F-box protein family, such as FBXW12, are characterized by an approximately 40-amino acid F-box motif. SCF complexes, formed by SKP1 (MIM 601434), cullin (see CUL1; MIM 603034), and F-box proteins, act as protein-ubiquitin ligases. F-box proteins interact with SKP1 through the F box, and they interact with ubiquitination targets through other protein interaction domains (Jin et al., 2004 [PubMed 15520277]).[supplied by OMIM].

### FBXW12 Antibody (C-term) - References

- Jin, J., et al. Genes Dev. 18(21):2573-2580(2004)
- Zeng, L., et al. Mol. Biol. Rep. 31(1):51-57(2004)