

**LHFPL5 Antibody (C-term)**  
**Affinity Purified Rabbit Polyclonal Antibody (Pab)**  
**Catalog # AP10415b****Specification**

---

**LHFPL5 Antibody (C-term) - Product Information**

Application	WB,E
Primary Accession	<a href="#">Q8TAF8</a>
Other Accession	<a href="#">Q5PPI7</a> , <a href="#">Q4KL25</a> , <a href="#">NP_872354.1</a>
Reactivity	Human, Mouse
Predicted	Rat
Host	Rabbit
Clonality	Polyclonal
Isotype	Rabbit IgG
Calculated MW	24201
Antigen Region	186-214

**LHFPL5 Antibody (C-term) - Additional Information****Gene ID** 222662**Other Names**

Tetraspan membrane protein of hair cell stereocilia, Lipoma HMGIC fusion partner-like 5 protein, LHFPL5, TMHS

**Target/Specificity**

This LHFPL5 antibody is generated from rabbits immunized with a KLH conjugated synthetic peptide between 186-214 amino acids from the C-terminal region of human LHFPL5.

**Dilution**

WB~~1:1000

**Format**

Purified polyclonal antibody supplied in PBS with 0.09% (W/V) sodium azide. This antibody is purified through a protein A column, followed by peptide affinity purification.

**Storage**

Maintain refrigerated at 2-8°C for up to 2 weeks. For long term storage store at -20°C in small aliquots to prevent freeze-thaw cycles.

**Precautions**

LHFPL5 Antibody (C-term) is for research use only and not for use in diagnostic or therapeutic procedures.

**LHFPL5 Antibody (C-term) - Protein Information****Name** LHFPL5 ([HGNC:21253](#))

**Function** In the inner ear, may be a component of the hair cell's mechanotransduction machinery that functionally couples PCDH15 to the transduction channel. Regulates transducer channel conductance and is required for fast channel adaptation (By similarity).

#### Cellular Location

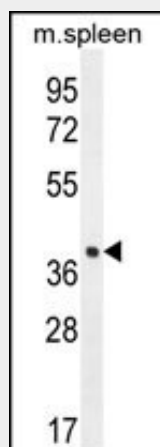
Cell membrane {ECO:0000250|UniProtKB:Q4KL25}; Multi-pass membrane protein. Note=Efficient localization to the plasma membrane requires the presence of PCDH15 {ECO:0000250|UniProtKB:Q4KL25}

#### LHFPL5 Antibody (C-term) - Protocols

Provided below are standard protocols that you may find useful for product applications.

- [Western Blot](#)
- [Blocking Peptides](#)
- [Dot Blot](#)
- [Immunohistochemistry](#)
- [Immunofluorescence](#)
- [Immunoprecipitation](#)
- [Flow Cytometry](#)
- [Cell Culture](#)

#### LHFPL5 Antibody (C-term) - Images



LHFPL5 Antibody (C-term) (Cat. #AP10415b) western blot analysis in mouse spleen tissue lysates (35ug/lane). This demonstrates the LHFPL5 antibody detected the LHFPL5 protein (arrow).

#### LHFPL5 Antibody (C-term) - Background

This gene is a member of the lipoma HMGIC fusion partner (LHFP) gene family, which is a subset of the superfamily of tetraspan transmembrane protein encoding genes. Mutations in this gene result in deafness in humans, and a mutation in a similar gene in mice results in deafness and vestibular dysfunction with severe degeneration of the organ of Corti. It is proposed to function in hair bundle morphogenesis.

#### LHFPL5 Antibody (C-term) - References

Cosetti, M., et al. Ann. Otol. Rhinol. Laryngol. 117(11):827-833(2008)

Shabbir, M.I., et al. J. Med. Genet. 43(8):634-640(2006)

Longo-Guess, C.M., et al. Proc. Natl. Acad. Sci. U.S.A. 102(22):7894-7899(2005)