

**CLIC6 Antibody (Center)**  
**Affinity Purified Rabbit Polyclonal Antibody (Pab)**  
**Catalog # AP10474c****Specification**

---

**CLIC6 Antibody (Center) - Product Information**

Application	WB, IHC-P, FC,E
Primary Accession	<a href="#">Q96NY7</a>
Other Accession	<a href="#">Q811Q2</a> , <a href="#">Q8BHB9</a> , <a href="#">NP_444507.1</a>
Reactivity	Human
Predicted	Mouse, Rat
Host	Rabbit
Clonality	Polyclonal
Isotype	Rabbit IgG
Calculated MW	73012
Antigen Region	539-565

**CLIC6 Antibody (Center) - Additional Information****Gene ID** 54102**Other Names**

Chloride intracellular channel protein 6, Parchorin, CLIC6, CLIC1L

**Target/Specificity**

This CLIC6 antibody is generated from rabbits immunized with a KLH conjugated synthetic peptide between 539-565 amino acids from the Central region of human CLIC6.

**Dilution**

WB~~1:1000  
IHC-P~~1:50~100  
FC~~1:10~50

**Format**

Purified polyclonal antibody supplied in PBS with 0.09% (W/V) sodium azide. This antibody is purified through a protein A column, followed by peptide affinity purification.

**Storage**

Maintain refrigerated at 2-8°C for up to 2 weeks. For long term storage store at -20°C in small aliquots to prevent freeze-thaw cycles.

**Precautions**

CLIC6 Antibody (Center) is for research use only and not for use in diagnostic or therapeutic procedures.

**CLIC6 Antibody (Center) - Protein Information****Name** CLIC6

## Synonyms CLIC1L

**Function** May insert into membranes and form chloride ion channels. May play a critical role in water-secreting cells, possibly through the regulation of chloride ion transport (By similarity).

## Cellular Location

Cytoplasm. Cell membrane; Single-pass membrane protein Note=Predominantly cytoplasmic. Upon chloride ion efflux from the cell, it is translocated to the plasma membrane (By similarity)

## Tissue Location

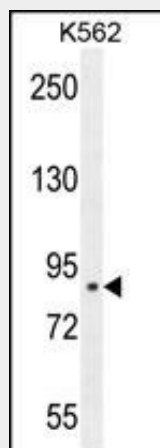
Expressed in brain, placenta, pancreas and liver.

## CLIC6 Antibody (Center) - Protocols

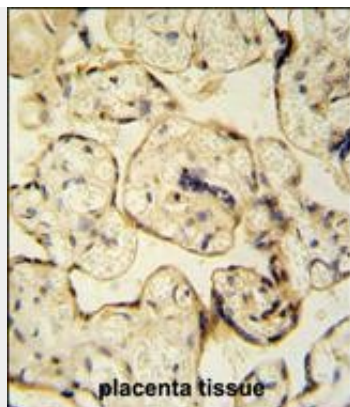
Provided below are standard protocols that you may find useful for product applications.

- [Western Blot](#)
- [Blocking Peptides](#)
- [Dot Blot](#)
- [Immunohistochemistry](#)
- [Immunofluorescence](#)
- [Immunoprecipitation](#)
- [Flow Cytometry](#)
- [Cell Culture](#)

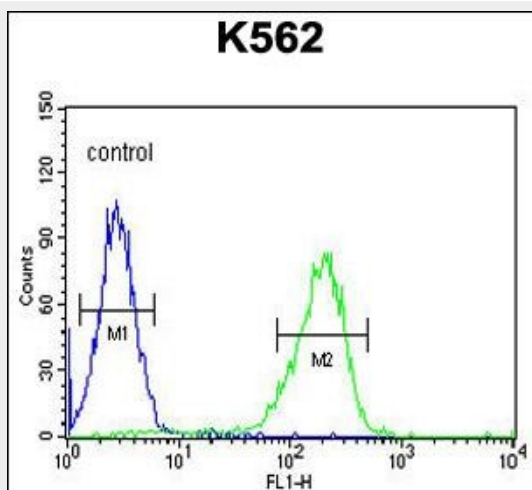
## CLIC6 Antibody (Center) - Images



CLIC6 Antibody (Center) (Cat. #AP10474c) western blot analysis in K562 cell line lysates (35ug/lane). This demonstrates the CLIC6 antibody detected the CLIC6 protein (arrow).



CLIC6 antibody (Center) (Cat. #AP10474c) immunohistochemistry analysis in formalin fixed and paraffin embedded human placenta tissue tissue followed by peroxidase conjugation of the secondary antibody and DAB staining. This data demonstrates the use of the CLIC6 antibody (Center) for immunohistochemistry. Clinical relevance has not been evaluated.



CLIC6 Antibody (Center) (Cat. #AP10474c) flow cytometric analysis of K562 cells (right histogram) compared to a negative control cell (left histogram). FITC-conjugated goat-anti-rabbit secondary antibodies were used for the analysis.

### CLIC6 Antibody (Center) - Background

CLIC6 is a member of the chloride intracellular channel family of proteins. The gene is part of a large triplicated region found on chromosomes 1, 6, and 21. An alternatively spliced transcript variant has been described, but its biological validity has not been determined.

### CLIC6 Antibody (Center) - References

Wheeler, H.E., et al. PLoS Genet. 5 (10), E1000685 (2009) :  
Friedli, M., et al. Gene 320, 31-40 (2003) :  
Strippoli, P., et al. Mamm. Genome 13(8):456-462(2002)  
Scanlan, M.J., et al. Cancer Immun. 1, 4 (2001) :