

**DEM1 Antibody (Center)**  
**Affinity Purified Rabbit Polyclonal Antibody (Pab)**  
**Catalog # AP10478c****Specification**

---

**DEM1 Antibody (Center) - Product Information**

Application	WB, FC,E
Primary Accession	<a href="#">Q9H790</a>
Other Accession	<a href="#">NP_073611.1</a>
Reactivity	Human, Hamster, Mouse
Host	Rabbit
Clonality	Polyclonal
Isotype	Rabbit IgG
Calculated MW	41816
Antigen Region	166-193

**DEM1 Antibody (Center) - Additional Information****Gene ID** 64789**Other Names**

Exonuclease V, Exo V, hExo5, 31--, Defects in morphology protein 1 homolog, EXO5, C1orf176, DEM1

**Target/Specificity**

This DEM1 antibody is generated from rabbits immunized with a KLH conjugated synthetic peptide between 166-193 amino acids from the Central region of human DEM1.

**Dilution**WB~~1:1000  
FC~~1:10~50**Format**

Purified polyclonal antibody supplied in PBS with 0.09% (W/V) sodium azide. This antibody is purified through a protein A column, followed by peptide affinity purification.

**Storage**

Maintain refrigerated at 2-8°C for up to 2 weeks. For long term storage store at -20°C in small aliquots to prevent freeze-thaw cycles.

**Precautions**

DEM1 Antibody (Center) is for research use only and not for use in diagnostic or therapeutic procedures.

**DEM1 Antibody (Center) - Protein Information****Name** EXO5

**Synonyms** C1orf176, DEM1

**Function** Single-stranded DNA (ssDNA) bidirectional exonuclease involved in DNA repair. Probably involved in DNA repair following ultraviolet (UV) irradiation and interstrand cross-links (ICLs) damage. Has both 5'-3' and 3'-5' exonuclease activities with a strong preference for 5'-ends. Acts as a sliding exonuclease that loads at ssDNA ends and then slides along the ssDNA prior to cutting; however the sliding and the 3'-5' exonuclease activities are abolished upon binding to the replication protein A (RPA) complex that enforces 5'- directionality activity.

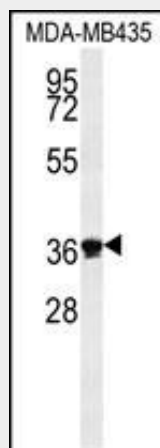
**Cellular Location**

Nucleus. Cytoplasm, cytosol. Note=Localizes to repair foci in response to DNA damage

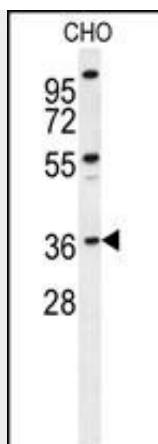
**DEM1 Antibody (Center) - Protocols**

Provided below are standard protocols that you may find useful for product applications.

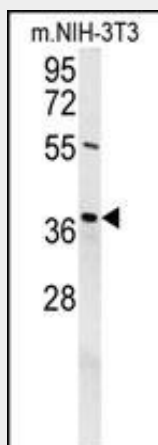
- [Western Blot](#)
- [Blocking Peptides](#)
- [Dot Blot](#)
- [Immunohistochemistry](#)
- [Immunofluorescence](#)
- [Immunoprecipitation](#)
- [Flow Cytometry](#)
- [Cell Culture](#)

**DEM1 Antibody (Center) - Images**

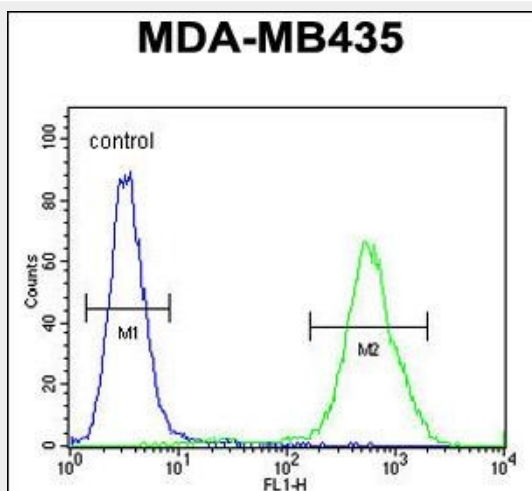
DEM1 Antibody (Center) (Cat. #AP10478c) western blot analysis in MDA-MB435 cell line lysates (35ug/lane). This demonstrates the DEM1 antibody detected the DEM1 protein (arrow).



DEM1 Antibody (Center) (Cat. #AP10478c) western blot analysis in CHO cell line lysates (35ug/lane). This demonstrates the DEM1 antibody detected the DEM1 protein (arrow).



DEM1 Antibody (Center) (Cat. #AP10478c) western blot analysis in mouse NIH-3T3 cell line lysates (35ug/lane). This demonstrates the DEM1 antibody detected the DEM1 protein (arrow).



DEM1 Antibody (Center) (Cat. #AP10478c) flow cytometric analysis of MDA-MB435 cells (right histogram) compared to a negative control cell (left histogram). FITC-conjugated goat-anti-rabbit secondary antibodies were used for the analysis.

#### DEM1 Antibody (Center) - References

Lamesch, P., et al. Genomics 89(3):307-315(2007)

Beausoleil, S.A., et al. Proc. Natl. Acad. Sci. U.S.A. 101(33):12130-12135(2004)

Beausoleil, S.A., et al. Proc. Natl. Acad. Sci. U.S.A. 101(33):12130-12135(2004)