

GNA15 Antibody (C-term)
Affinity Purified Rabbit Polyclonal Antibody (Pab)
Catalog # AP10483b

Specification

GNA15 Antibody (C-term) - Product Information

Application	WB,E
Primary Accession	P30679
Other Accession	O9TU29 , NP_002059.2
Reactivity	Human, Mouse
Predicted	Rabbit
Host	Rabbit
Clonality	Polyclonal
Isotype	Rabbit IgG
Calculated MW	43508
Antigen Region	333-361

GNA15 Antibody (C-term) - Additional Information

Gene ID 2769

Other Names

Guanine nucleotide-binding protein subunit alpha-15, G alpha-15, G-protein subunit alpha-15, Epididymis tissue protein Li 17E, Guanine nucleotide-binding protein subunit alpha-16, G alpha-16, G-protein subunit alpha-16, GNA15, GNA16

Target/Specificity

This GNA15 antibody is generated from rabbits immunized with a KLH conjugated synthetic peptide between 333-361 amino acids from the C-terminal region of human GNA15.

Dilution

WB~~1:1000

Format

Purified polyclonal antibody supplied in PBS with 0.09% (W/V) sodium azide. This antibody is purified through a protein A column, followed by peptide affinity purification.

Storage

Maintain refrigerated at 2-8°C for up to 2 weeks. For long term storage store at -20°C in small aliquots to prevent freeze-thaw cycles.

Precautions

GNA15 Antibody (C-term) is for research use only and not for use in diagnostic or therapeutic procedures.

GNA15 Antibody (C-term) - Protein Information

Name GNA15

Synonyms GNA16

Function Guanine nucleotide-binding proteins (G proteins) are involved as modulators or transducers in various transmembrane signaling systems.

Tissue Location

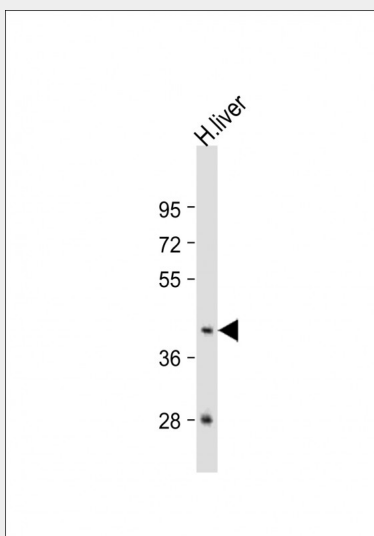
Specifically expressed in hematopoietic cells. Expressed in epididymis (at protein level)

GNA15 Antibody (C-term) - Protocols

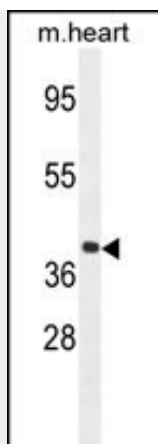
Provided below are standard protocols that you may find useful for product applications.

- [Western Blot](#)
- [Blocking Peptides](#)
- [Dot Blot](#)
- [Immunohistochemistry](#)
- [Immunofluorescence](#)
- [Immunoprecipitation](#)
- [Flow Cytometry](#)
- [Cell Culture](#)

GNA15 Antibody (C-term) - Images



Anti-GNA15 Antibody (C-term) at 1:1000 dilution + human liver lysate Lysates/proteins at 20 µg per lane. Secondary Goat Anti-Rabbit IgG, (H+L), Peroxidase conjugated at 1/10000 dilution. Predicted band size : 44 kDa Blocking/Dilution buffer: 5% NFDM/TBST.



GNA15 Antibody (C-term) (Cat. #AP10483b) western blot analysis in mouse heart tissue lysates (35ug/lane). This demonstrates the GNA15 antibody detected the GNA15 protein (arrow).

GNA15 Antibody (C-term) - Background

Guanine nucleotide-binding proteins (G proteins) are involved as modulators or transducers in various transmembrane signaling systems.

GNA15 Antibody (C-term) - References

- Smith, N.L., et al. Circ Cardiovasc Genet 3(3):256-266(2010)
- Lee, M.M., et al. J. Leukoc. Biol. 86(6):1319-1329(2009)
- Lo, R.K., et al. Cell. Signal. 20(11):2095-2106(2008)
- Luttrell, L.M. Mol. Biotechnol. 39(3):239-264(2008)
- Lamesch, P., et al. Genomics 89(3):307-315(2007)