

**VITRN Antibody (C-term)**  
**Affinity Purified Rabbit Polyclonal Antibody (Pab)**  
**Catalog # AP10507b****Specification**

---

**VITRN Antibody (C-term) - Product Information**

Application	WB, IHC-P, FC,E
Primary Accession	<a href="#">Q6UXI7</a>
Other Accession	<a href="#">Q8VHI5</a> , <a href="#">Q95LI2</a> , <a href="#">NP_001171442.1</a>
Reactivity	Human
Predicted	Bovine, Mouse
Host	Rabbit
Clonality	Polyclonal
Isotype	Rabbit IgG
Calculated MW	73930
Antigen Region	567-595

**VITRN Antibody (C-term) - Additional Information****Gene ID** 5212**Other Names**

Vitrin, VIT

**Target/Specificity**

This VITRN antibody is generated from rabbits immunized with a KLH conjugated synthetic peptide between 567-595 amino acids from the C-terminal region of human VITRN.

**Dilution**

WB~~1:1000  
IHC-P~~1:50~100  
FC~~1:10~50

**Format**

Purified polyclonal antibody supplied in PBS with 0.09% (W/V) sodium azide. This antibody is purified through a protein A column, followed by peptide affinity purification.

**Storage**

Maintain refrigerated at 2-8°C for up to 2 weeks. For long term storage store at -20°C in small aliquots to prevent freeze-thaw cycles.

**Precautions**

VITRN Antibody (C-term) is for research use only and not for use in diagnostic or therapeutic procedures.

**VITRN Antibody (C-term) - Protein Information****Name** VIT

**Function** Promotes matrix assembly and cell adhesiveness. Plays a role in spinal cord formation by regulating the proliferation and differentiation of neural stem cells.

**Cellular Location**

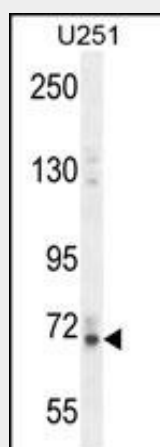
Secreted, extracellular space, extracellular matrix

**VITRN Antibody (C-term) - Protocols**

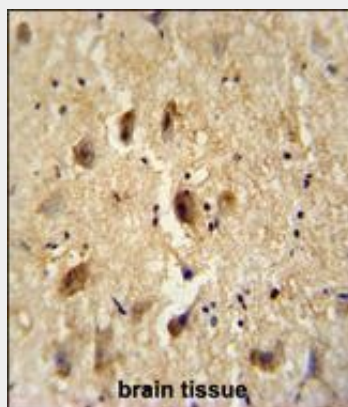
Provided below are standard protocols that you may find useful for product applications.

- [Western Blot](#)
- [Blocking Peptides](#)
- [Dot Blot](#)
- [Immunohistochemistry](#)
- [Immunofluorescence](#)
- [Immunoprecipitation](#)
- [Flow Cytometry](#)
- [Cell Culture](#)

**VITRN Antibody (C-term) - Images**

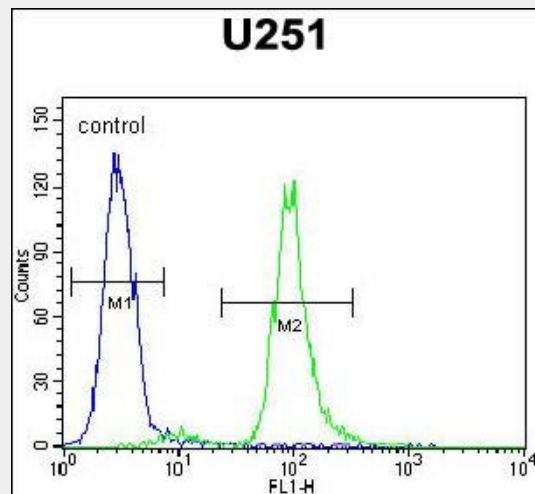


VITRN Antibody (C-term) (Cat. #AP10507b) western blot analysis in U251 cell line lysates (35ug/lane). This demonstrates the VITRN antibody detected the VITRN protein (arrow).



VITRN antibody (C-term) (Cat. #AP10507b) immunohistochemistry analysis in formalin fixed and paraffin embedded human brain tissue followed by peroxidase conjugation of the secondary

antibody and DAB staining. This data demonstrates the use of the VITRN antibody (C-term) for immunohistochemistry. Clinical relevance has not been evaluated.



VITRN Antibody (C-term) (Cat. #AP10507b) flow cytometric analysis of U251 cells (right histogram) compared to a negative control cell (left histogram). FITC-conjugated goat-anti-rabbit secondary antibodies were used for the analysis.

#### **VITRN Antibody (C-term) - Background**

Promotes matrix assembly and cell adhesiveness (By similarity).

#### **VITRN Antibody (C-term) - References**

- Rose, J.E., et al. Mol. Med. 16 (7-8), 247-253 (2010) :
- Clark, H.F., et al. Genome Res. 13(10):2265-2270(2003)
- Tomarev, S.I., et al. Invest. Ophthalmol. Vis. Sci. 44(6):2588-2596(2003)
- Whittaker, C.A., et al. Mol. Biol. Cell 13(10):3369-3387(2002)
- Mayne, R., et al. Biochem. Soc. Trans. 27(6):832-835(1999)