

TPGS2 Antibody (Center)
Affinity Purified Rabbit Polyclonal Antibody (Pab)
Catalog # AP10530c**Specification**

TPGS2 Antibody (Center) - Product Information

Application	WB, IHC-P,E
Primary Accession	Q68CL5
Other Accession	NP_056291.2
Reactivity	Human
Host	Rabbit
Clonality	Polyclonal
Isotype	Rabbit IgG
Calculated MW	33318
Antigen Region	109-137

TPGS2 Antibody (Center) - Additional Information**Gene ID** 25941**Other Names**

Tubulin polyglutamylase complex subunit 2, PGs2, TPGS2, C18orf10

Target/Specificity

This TPGS2 antibody is generated from rabbits immunized with a KLH conjugated synthetic peptide between 109-137 amino acids from the Central region of human TPGS2.

Dilution

WB~~1:1000

IHC-P~~1:50~100

Format

Purified polyclonal antibody supplied in PBS with 0.09% (W/V) sodium azide. This antibody is purified through a protein A column, followed by peptide affinity purification.

Storage

Maintain refrigerated at 2-8°C for up to 2 weeks. For long term storage store at -20°C in small aliquots to prevent freeze-thaw cycles.

Precautions

TPGS2 Antibody (Center) is for research use only and not for use in diagnostic or therapeutic procedures.

TPGS2 Antibody (Center) - Protein Information**Name** TPGS2**Synonyms** C18orf10

Function Subunit of the tubulin polyglutamylase complex (TPGC). The complex mediates cilia and flagella polyglutamylation which is essential for their biogenesis and motility.

Cellular Location

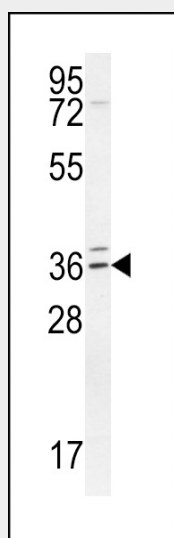
Cytoplasm, cytoskeleton. Cytoplasm, cytoskeleton, microtubule organizing center, centrosome, centriolar satellite. Note=Associated with microtubules

TPGS2 Antibody (Center) - Protocols

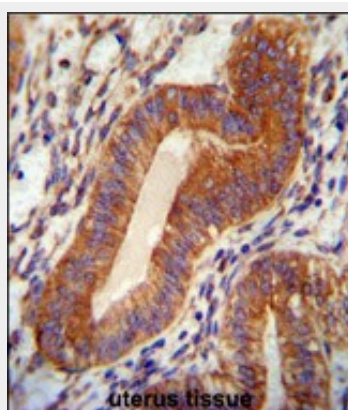
Provided below are standard protocols that you may find useful for product applications.

- [Western Blot](#)
- [Blocking Peptides](#)
- [Dot Blot](#)
- [Immunohistochemistry](#)
- [Immunofluorescence](#)
- [Immunoprecipitation](#)
- [Flow Cytometry](#)
- [Cell Culture](#)

TPGS2 Antibody (Center) - Images



TPGS2 Antibody (Center) (Cat. #AP10530c) western blot analysis in Jurkat cell line lysates (35ug/lane). This demonstrates the TPGS2 antibody detected the TPGS2 protein (arrow).



TPGS2 antibody (Center) (Cat. #AP10530c) immunohistochemistry analysis in formalin fixed and paraffin embedded human uterus tissue followed by peroxidase conjugation of the secondary antibody and DAB staining. This data demonstrates the use of the TPGS2 antibody (Center) for immunohistochemistry. Clinical relevance has not been evaluated.

TPGS2 Antibody (Center) - Background

The function of C18orf10 remains unknown.

TPGS2 Antibody (Center) - References

Petroziello, J., et al. Oncogene 23(46):7734-7745(2004)
Yamada, S., et al. Oncogene 23(35):5901-5911(2004)