

**C11orf74 Antibody (C-term)**  
**Affinity Purified Rabbit Polyclonal Antibody (Pab)**  
**Catalog # AP10578B****Specification**

---

**C11orf74 Antibody (C-term) - Product Information**

Application	WB, FC,E
Primary Accession	<a href="#">Q86VG3</a>
Other Accession	<a href="#">NP_620142.2</a>
Reactivity	Human
Host	Rabbit
Clonality	Polyclonal
Isotype	Rabbit IgG
Calculated MW	25407
Antigen Region	190-220

**C11orf74 Antibody (C-term) - Additional Information****Gene ID** 119710**Other Names**

Uncharacterized protein C11orf74, Protein HEPIS, C11orf74

**Target/Specificity**

This C11orf74 antibody is generated from rabbits immunized with a KLH conjugated synthetic peptide between 190-220 amino acids from the C-terminal region of human C11orf74.

**Dilution**

WB~~1:1000

FC~~1:10~50

**Format**

Purified polyclonal antibody supplied in PBS with 0.09% (W/V) sodium azide. This antibody is purified through a protein A column, followed by peptide affinity purification.

**Storage**

Maintain refrigerated at 2-8°C for up to 2 weeks. For long term storage store at -20°C in small aliquots to prevent freeze-thaw cycles.

**Precautions**

C11orf74 Antibody (C-term) is for research use only and not for use in diagnostic or therapeutic procedures.

**C11orf74 Antibody (C-term) - Protein Information****Name** IFTAP ([HGNC:25142](#))**Function** Seems to play a role in ciliary BBSome localization, maybe through interaction with

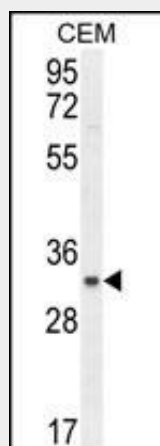
IFT-A complex.

### **C11orf74 Antibody (C-term) - Protocols**

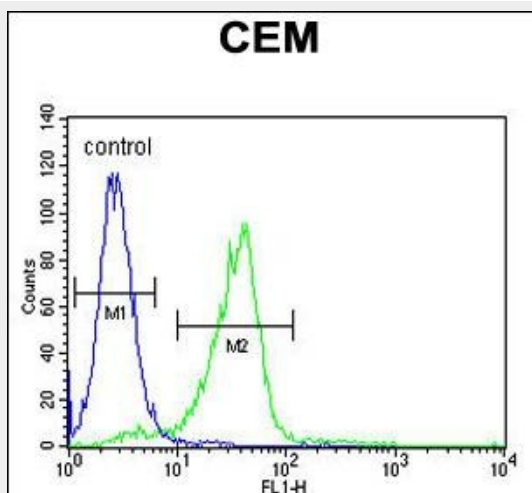
Provided below are standard protocols that you may find useful for product applications.

- [Western Blot](#)
- [Blocking Peptides](#)
- [Dot Blot](#)
- [Immunohistochemistry](#)
- [Immunofluorescence](#)
- [Immunoprecipitation](#)
- [Flow Cytometry](#)
- [Cell Culture](#)

### **C11orf74 Antibody (C-term) - Images**



C11orf74 Antibody (C-term) (Cat. #AP10578b) western blot analysis in CEM cell line lysates (35ug/lane). This demonstrates the C11orf74 antibody detected the C11orf74 protein (arrow).



C11orf74 Antibody (C-term) (Cat. #AP10578b) flow cytometric analysis of CEM cells (right histogram) compared to a negative control cell (left histogram). FITC-conjugated goat-anti-rabbit secondary antibodies were used for the analysis.

### **C11orf74 Antibody (C-term) - Background**

The exact function of C11orf74 remains unknown.

#### **C11orf74 Antibody (C-term) - References**

Hosgood, H.D. III, et al. Occup Environ Med 66(12):848-853(2009)

Hong, M., et al. Viral Immunol. 21(2):153-162(2008)

Lamesch, P., et al. Genomics 89(3):307-315(2007)