

**ZIK1 Antibody (Center)**  
**Affinity Purified Rabbit Polyclonal Antibody (Pab)**  
**Catalog # AP10579c****Specification**

---

**ZIK1 Antibody (Center) - Product Information**

Application	WB, FC,E
Primary Accession	<a href="#">Q3SY52</a>
Other Accession	<a href="#">NP_001010879.2</a>
Reactivity	Human
Host	Rabbit
Clonality	Polyclonal
Isotype	Rabbit IgG
Calculated MW	54786
Antigen Region	186-215

**ZIK1 Antibody (Center) - Additional Information****Gene ID** 284307**Other Names**

Zinc finger protein interacting with ribonucleoprotein K, Zinc finger protein 762, ZIK1, ZNF762

**Target/Specificity**

This ZIK1 antibody is generated from rabbits immunized with a KLH conjugated synthetic peptide between 186-215 amino acids from the Central region of human ZIK1.

**Dilution**

WB~~1:1000

FC~~1:10~50

**Format**

Purified polyclonal antibody supplied in PBS with 0.09% (W/V) sodium azide. This antibody is purified through a protein A column, followed by peptide affinity purification.

**Storage**

Maintain refrigerated at 2-8°C for up to 2 weeks. For long term storage store at -20°C in small aliquots to prevent freeze-thaw cycles.

**Precautions**

ZIK1 Antibody (Center) is for research use only and not for use in diagnostic or therapeutic procedures.

**ZIK1 Antibody (Center) - Protein Information****Name** ZIK1**Synonyms** ZNF762

**Function** May be a transcriptional repressor.

**Cellular Location**

Nucleus.

**Tissue Location**

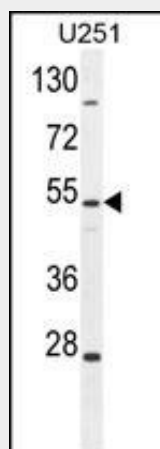
Expressed at high levels in gastric glands, and at low levels in colon and small intestine. Silenced through promoter methylation in gastric glands with intestinal metaplasia

**ZIK1 Antibody (Center) - Protocols**

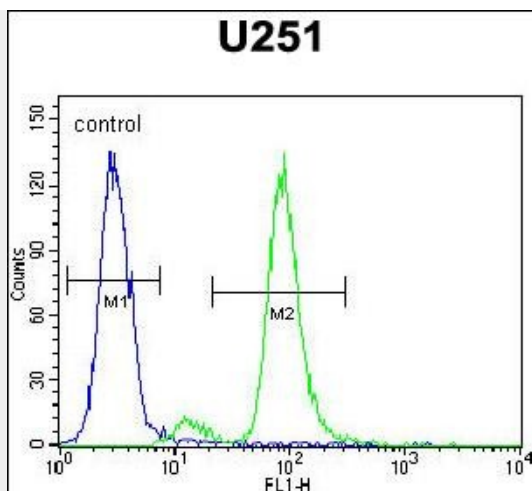
Provided below are standard protocols that you may find useful for product applications.

- [Western Blot](#)
- [Blocking Peptides](#)
- [Dot Blot](#)
- [Immunohistochemistry](#)
- [Immunofluorescence](#)
- [Immunoprecipitation](#)
- [Flow Cytometry](#)
- [Cell Culture](#)

**ZIK1 Antibody (Center) - Images**



ZIK1 Antibody (Center) (Cat. #AP10579c) western blot analysis in U251 cell line lysates (35ug/lane). This demonstrates the ZIK1 antibody detected the ZIK1 protein (arrow).



ZIK1 Antibody (Center) (Cat. #AP10579c) flow cytometric analysis of U251 cells (right histogram) compared to a negative control cell (left histogram). FITC-conjugated goat-anti-rabbit secondary antibodies were used for the analysis.

#### **ZIK1 Antibody (Center) - Background**

May be a transcriptional repressor (By similarity).

#### **ZIK1 Antibody (Center) - References**

Ota, T., et al. Nat. Genet. 36(1):40-45(2004)