

**ZSWIM1 Antibody (C-term)**  
**Affinity Purified Rabbit Polyclonal Antibody (Pab)**  
**Catalog # AP10601B****Specification**

---

**ZSWIM1 Antibody (C-term) - Product Information**

Application	WB, IHC-P,E
Primary Accession	<a href="#">O9BR11</a>
Other Accession	<a href="#">NP_542170.3</a>
Reactivity	Human
Host	Rabbit
Clonality	Polyclonal
Isotype	Rabbit IgG
Calculated MW	55071
Antigen Region	443-471

**ZSWIM1 Antibody (C-term) - Additional Information****Gene ID** 90204**Other Names**

Zinc finger SWIM domain-containing protein 1, ZSWIM1, C20orf162

**Target/Specificity**

This ZSWIM1 antibody is generated from rabbits immunized with a KLH conjugated synthetic peptide between 443-471 amino acids from the C-terminal region of human ZSWIM1.

**Dilution**

WB~~1:1000

IHC-P~~1:50~100

**Format**

Purified polyclonal antibody supplied in PBS with 0.09% (W/V) sodium azide. This antibody is purified through a protein A column, followed by peptide affinity purification.

**Storage**

Maintain refrigerated at 2-8°C for up to 2 weeks. For long term storage store at -20°C in small aliquots to prevent freeze-thaw cycles.

**Precautions**

ZSWIM1 Antibody (C-term) is for research use only and not for use in diagnostic or therapeutic procedures.

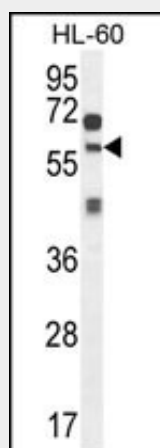
**ZSWIM1 Antibody (C-term) - Protein Information****Name** ZSWIM1**Synonyms** C20orf162

## ZSWIM1 Antibody (C-term) - Protocols

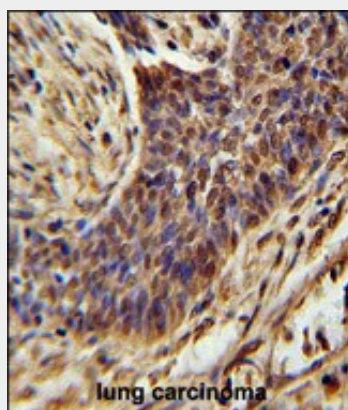
Provided below are standard protocols that you may find useful for product applications.

- [Western Blot](#)
- [Blocking Peptides](#)
- [Dot Blot](#)
- [Immunohistochemistry](#)
- [Immunofluorescence](#)
- [Immunoprecipitation](#)
- [Flow Cytometry](#)
- [Cell Culture](#)

## ZSWIM1 Antibody (C-term) - Images



ZSWIM1 Antibody (C-term) (Cat. #AP10601b) western blot analysis in HL-60 cell line lysates (35ug/lane). This demonstrates the ZSWIM1 antibody detected the ZSWIM1 protein (arrow).



ZSWIM1 Antibody (C-term) (Cat. #AP10601b) immunohistochemistry analysis in formalin fixed and paraffin embedded human lung carcinoma followed by peroxidase conjugation of the secondary antibody and DAB staining. This data demonstrates the use of the ZSWIM1 Antibody (C-term) for immunohistochemistry. Clinical relevance has not been evaluated.

## ZSWIM1 Antibody (C-term) - References

Deloukas, P., et al. Nature 414(6866):865-871(2001)