

VPS52 Antibody (C-term)
Affinity Purified Rabbit Polyclonal Antibody (Pab)
Catalog # AP10925b

Specification

VPS52 Antibody (C-term) - Product Information

Application	IF, FC, IHC-P, WB,E
Primary Accession	Q8N1B4
Other Accession	O55166 , Q8C754 , NP_072047.4
Reactivity	Human
Predicted	Mouse, Rat
Host	Rabbit
Clonality	Polyclonal
Isotype	Rabbit IgG
Calculated MW	82221
Antigen Region	610-637

VPS52 Antibody (C-term) - Additional Information

Gene ID 6293

Other Names

Vacuolar protein sorting-associated protein 52 homolog, SAC2 suppressor of actin mutations 2-like protein, VPS52, SACM2L

Target/Specificity

This VPS52 antibody is generated from rabbits immunized with a KLH conjugated synthetic peptide between 610-637 amino acids from the C-terminal region of human VPS52.

Dilution

IF~~1:10~50
FC~~1:10~50
IHC-P~~1:50~100
WB~~1:1000
E~~Use at an assay dependent concentration.

Format

Purified polyclonal antibody supplied in PBS with 0.09% (W/V) sodium azide. This antibody is purified through a protein A column, followed by peptide affinity purification.

Storage

Maintain refrigerated at 2-8°C for up to 2 weeks. For long term storage store at -20°C in small aliquots to prevent freeze-thaw cycles.

Precautions

VPS52 Antibody (C-term) is for research use only and not for use in diagnostic or therapeutic procedures.

VPS52 Antibody (C-term) - Protein Information

Name VPS52

Synonyms SACM2L

Function Acts as a component of the GARP complex that is involved in retrograde transport from early and late endosomes to the trans-Golgi network (TGN). The GARP complex is required for the maintenance of the cycling of mannose 6-phosphate receptors between the TGN and endosomes, this cycling is necessary for proper lysosomal sorting of acid hydrolases such as CTSD (PubMed:[15878329](#), PubMed:[18367545](#)). Acts as a component of the EARP complex that is involved in endocytic recycling. The EARP complex associates with Rab4-positive endosomes and promotes recycling of internalized transferrin receptor (TFRC) to the plasma membrane (PubMed:[25799061](#)).

Cellular Location

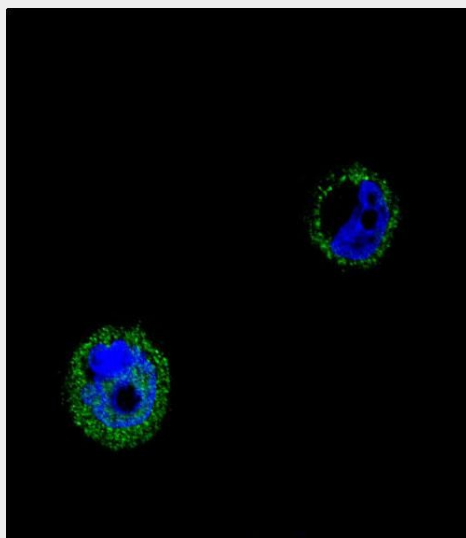
Golgi apparatus, trans-Golgi network membrane; Peripheral membrane protein. Endosome membrane; Peripheral membrane protein. Recycling endosome. Note=Localizes to the trans-Golgi network as part of the GARP complex, while it localizes to recycling endosomes as part of the EARP complex (PubMed:25799061)

VPS52 Antibody (C-term) - Protocols

Provided below are standard protocols that you may find useful for product applications.

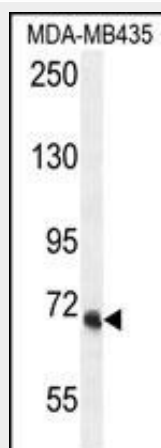
- [Western Blot](#)
- [Blocking Peptides](#)
- [Dot Blot](#)
- [Immunohistochemistry](#)
- [Immunofluorescence](#)
- [Immunoprecipitation](#)
- [Flow Cytometry](#)
- [Cell Culture](#)

VPS52 Antibody (C-term) - Images

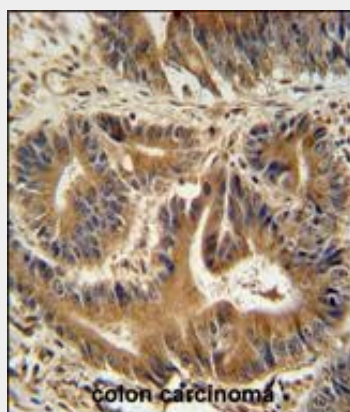


Confocal immunofluorescent analysis of VPS52 Antibody (C-term)(Cat#AP10925b) with MCF-7 cell followed by Alexa Fluor® 488-conjugated goat anti-rabbit IgG (green). DAPI was used to stain the

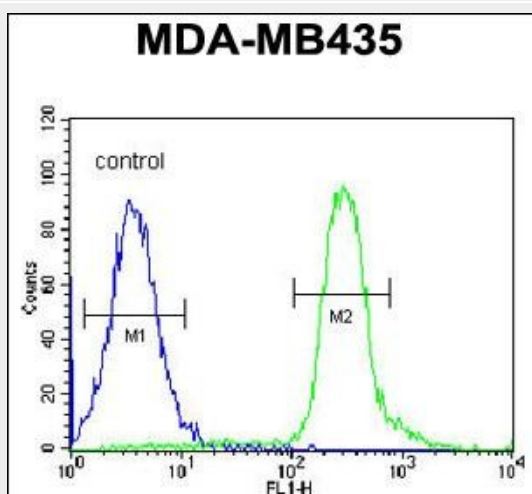
cell nuclear (blue).



VPS52 Antibody (C-term) (Cat. #AP10925b) western blot analysis in MDA-MB435 cell line lysates (35ug/lane). This demonstrates the VPS52 antibody detected the VPS52 protein (arrow).



VPS52 antibody (C-term) (Cat. #AP10925b) immunohistochemistry analysis in formalin fixed and paraffin embedded human colon carcinoma followed by peroxidase conjugation of the secondary antibody and DAB staining. This data demonstrates the use of the VPS52 antibody (C-term) for immunohistochemistry. Clinical relevance has not been evaluated.



VPS52 Antibody (C-term) (Cat. #AP10925b) flow cytometric analysis of MDA-MB435 cells (right histogram) compared to a negative control cell (left histogram). FITC-conjugated goat-anti-rabbit secondary antibodies were used for the analysis.

VPS52 Antibody (C-term) - Background

This gene encodes a protein that is similar to the yeast suppressor of actin mutations 2 gene. The yeast protein forms a subunit of the tetrameric Golgi-associated retrograde protein complex that is involved in vesicle trafficking from from both early and late endosomes, back to the trans-Golgi network. This gene is located on chromosome 6 in a head-to-head orientation with the gene encoding ribosomal protein S18.

VPS52 Antibody (C-term) - References

Barcellos, L.F., et al. PLoS Genet. 5 (10), E1000696 (2009) : Perez-Victoria, F.J., et al. Mol. Cell. Biol. 29(19):5251-5263(2009) Perez-Victoria, F.J., et al. Mol. Biol. Cell 19(6):2350-2362(2008) Liewen, H., et al. Exp. Cell Res. 306(1):24-34(2005) Mungall, A.J., et al. Nature 425(6960):805-811(2003)