

**SUV4-20H2 Antibody (N-term)**  
**Purified Rabbit Polyclonal Antibody (Pab)**  
**Catalog # AP12073a****Specification**

---

**SUV4-20H2 Antibody (N-term) - Product Information**

Application	WB,E
Primary Accession	<a href="#">Q86Y97</a>
Other Accession	<a href="#">NP_116090.2</a>
Reactivity	Mouse
Host	Rabbit
Clonality	Polyclonal
Isotype	Rabbit IgG
Antigen Region	60-99

**SUV4-20H2 Antibody (N-term) - Additional Information****Gene ID** 84787**Other Names**

Histone-lysine N-methyltransferase SUV420H2, Lysine N-methyltransferase 5C, Suppressor of variegation 4-20 homolog 2, Su(var)4-20 homolog 2, Suv4-20h2, SUV420H2, KMT5C

**Target/Specificity**

This SUV4-20H2 antibody is generated from rabbits immunized with a KLH conjugated synthetic peptide between 60-90 amino acids of human SUV4-20H2.

**Dilution**

WB~~1:1000

**Format**

Purified polyclonal antibody supplied in PBS with 0.09% (W/V) sodium azide. This antibody is prepared by Saturated Ammonium Sulfate (SAS) precipitation followed by dialysis against PBS.

**Storage**

Maintain refrigerated at 2-8°C for up to 2 weeks. For long term storage store at -20°C in small aliquots to prevent freeze-thaw cycles.

**Precautions**

SUV4-20H2 Antibody (N-term) is for research use only and not for use in diagnostic or therapeutic procedures.

**SUV4-20H2 Antibody (N-term) - Protein Information****Name** KMT5C ([HGNC:28405](#))**Synonyms** SUV420H2

**Function** Histone methyltransferase that specifically methylates monomethylated 'Lys-20' (H4K20me1) and dimethylated 'Lys-20' (H4K20me2) of histone H4 to produce respectively dimethylated 'Lys-20' (H4K20me2) and trimethylated 'Lys-20' (H4K20me3) and thus regulates transcription and maintenance of genome integrity (PubMed:[24396869](#), PubMed:[28114273](#)). In vitro also methylates unmodified 'Lys-20' (H4K20me0) of histone H4 and nucleosomes (PubMed:[24396869](#)). H4 'Lys-20' trimethylation represents a specific tag for epigenetic transcriptional repression. Mainly functions in pericentric heterochromatin regions, thereby playing a central role in the establishment of constitutive heterochromatin in these regions. KMT5C is targeted to histone H3 via its interaction with RB1 family proteins (RB1, RBL1 and RBL2) (By similarity). Facilitates TP53BP1 foci formation upon DNA damage and proficient non-homologous end-joining (NHEJ)-directed DNA repair by catalyzing the di- and trimethylation of 'Lys-20' of histone H4 (PubMed:[28114273](#)). May play a role in class switch recombination by catalyzing the di- and trimethylation of 'Lys-20' of histone H4 (By similarity).

#### Cellular Location

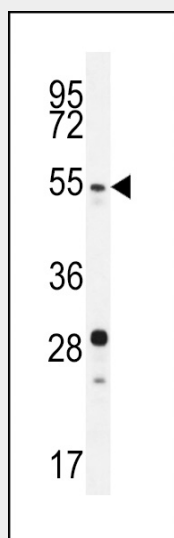
Nucleus. Chromosome. Note=Associated with pericentric heterochromatin. CBX1 and CBX5 are required for the localization to pericentric heterochromatin (By similarity).

#### SUV4-20H2 Antibody (N-term) - Protocols

Provided below are standard protocols that you may find useful for product applications.

- [Western Blot](#)
- [Blocking Peptides](#)
- [Dot Blot](#)
- [Immunohistochemistry](#)
- [Immunofluorescence](#)
- [Immunoprecipitation](#)
- [Flow Cytometry](#)
- [Cell Culture](#)

#### SUV4-20H2 Antibody (N-term) - Images



SUV4-20H2 Antibody (N-term) (Cat. #AP12073a) western blot analysis in mouse stomach tissue lysates (35ug/lane). This demonstrates the SUV4-20H2 antibody detected the SUV4-20H2 protein (arrow).

#### SUV4-20H2 Antibody (N-term) - Background

SUV420H2 and the related enzyme SUV420H1 (MIM 610881) function as histone methyltransferases that specifically trimethylate nucleosomal histone H4 (see MIM 602822) on lysine-20 (K20) (Schotta et al., 2004 [PubMed 15145825]).

#### **SUV4-20H2 Antibody (N-term) - References**

Stolk, L., et al. Nat. Genet. (2009) In press :  
Souza, P.P., et al. BMC Cell Biol. 10, 41 (2009) :  
Yang, H., et al. J. Biol. Chem. 283(18):12085-12092(2008)  
Szafranski, K., et al. Genome Biol. 8 (8), R154 (2007) :  
Tryndyak, V.P., et al. Cancer Biol. Ther. 5(1):65-70(2006)