

**SENP3 Antibody (N-term)**  
**Purified Rabbit Polyclonal Antibody (Pab)**  
**Catalog # AP1234a****Specification**

---

**SENP3 Antibody (N-term) - Product Information**

Application	WB, IHC-P,E
Primary Accession	<a href="#">Q9H4L4</a>
Other Accession	<a href="#">Q9EP97</a>
Reactivity	Human
Predicted	Mouse
Host	Rabbit
Clonality	Polyclonal
Isotype	Rabbit IgG
Antigen Region	1-30

**SENP3 Antibody (N-term) - Additional Information****Gene ID** 26168**Other Names**

Sentrin-specific protease 3, SUMO-1-specific protease 3, Sentrin/SUMO-specific protease SENP3, SENP3, SSP3, SUSP3

**Target/Specificity**

This SENP3 antibody is generated from rabbits immunized with a KLH conjugated synthetic peptide between 1-30 amino acids from the N-terminal region of human SENP3.

**Dilution**

WB~~1:1000  
IHC-P~~1:50~100

**Format**

Purified polyclonal antibody supplied in PBS with 0.09% (W/V) sodium azide. This antibody is prepared by Saturated Ammonium Sulfate (SAS) precipitation followed by dialysis against PBS.

**Storage**

Maintain refrigerated at 2-8°C for up to 2 weeks. For long term storage store at -20°C in small aliquots to prevent freeze-thaw cycles.

**Precautions**

SENP3 Antibody (N-term) is for research use only and not for use in diagnostic or therapeutic procedures.

**SENP3 Antibody (N-term) - Protein Information****Name** SENP3

**Function** Protease that releases SUMO2 and SUMO3 monomers from sumoylated substrates, but has only weak activity against SUMO1 conjugates (PubMed:[16608850](#), PubMed:[32832608](#)). Deconjugates SUMO2 from MEF2D, which increases its transcriptional activation capability (PubMed:[15743823](#)). Deconjugates SUMO2 and SUMO3 from CDCA8 (PubMed:[18946085](#)). Redox sensor that, when redistributed into nucleoplasm, can act as an effector to enhance HIF1A transcriptional activity by desumoylating EP300 (PubMed:[19680224](#)). Required for rRNA processing through deconjugation of SUMO2 and SUMO3 from nucleophosmin, NPM1 (PubMed:[19015314](#)). Plays a role in the regulation of sumoylation status of ZNF148 (PubMed:[18259216](#)). Functions as a component of the Five Friends of Methylated CHTOP (5FMC) complex; the 5FMC complex is recruited to ZNF148 by methylated CHTOP, leading to desumoylation of ZNF148 and subsequent transactivation of ZNF148 target genes (PubMed:[22872859](#)). Deconjugates SUMO2 from KAT5 (PubMed:[32832608](#)).

#### Cellular Location

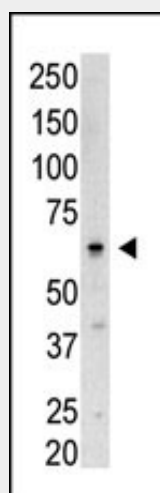
Nucleus, nucleolus. Nucleus, nucleoplasm. Cytoplasm {ECO:0000250|UniProtKB:Q9EP97}  
Note=Redistributes between the nucleolus and the nucleoplasm in response to mild oxidative stress (PubMed:19680224). Mainly found in the nucleoplasm, with low levels detected in the cytoplasmic and chromatin fractions (By similarity). {ECO:0000250|UniProtKB:Q9EP97, ECO:0000269|PubMed:19680224}

#### SEN3 Antibody (N-term) - Protocols

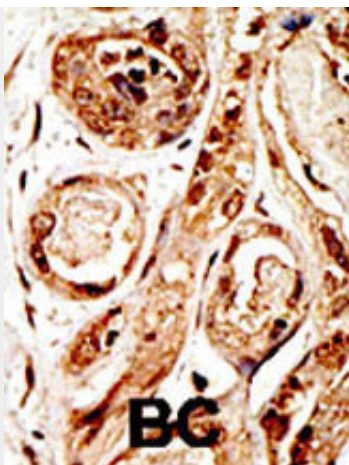
Provided below are standard protocols that you may find useful for product applications.

- [Western Blot](#)
- [Blocking Peptides](#)
- [Dot Blot](#)
- [Immunohistochemistry](#)
- [Immunofluorescence](#)
- [Immunoprecipitation](#)
- [Flow Cytometry](#)
- [Cell Culture](#)

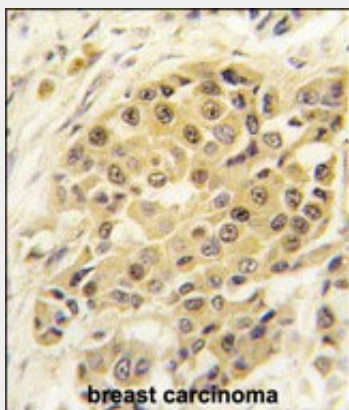
#### SEN3 Antibody (N-term) - Images



Western blot analysis of SEN3 N-term polyclonal antibody (Cat. #AP1234a) in Saos-2 cell lysate. SEN3 (arrow) was detected using purified Pab. Secondary HRP-anti-rabbit was used for signal visualization with chemiluminescence.



Formalin-fixed and paraffin-embedded human cancer tissue reacted with the primary antibody, which was peroxidase-conjugated to the secondary antibody, followed by AEC staining. This data demonstrates the use of this antibody for immunohistochemistry; clinical relevance has not been evaluated. BC = breast carcinoma; HC = hepatocarcinoma.



Formalin-fixed and paraffin-embedded human breast carcinoma tissue reacted with SENP3 antibody (N-term) (Cat.#AP1234a), which was peroxidase-conjugated to the secondary antibody, followed by DAB staining. This data demonstrates the use of this antibody for immunohistochemistry; clinical relevance has not been evaluated.

### **SENP3 Antibody (N-term) - Background**

SENP3 releases SUMO2 and SUMO3 monomers from sumoylated substrates, but has only weak activity against SUMO1 conjugates. This protein deconjugates SUMO2 from MEF2D, which increases its transcriptional activation capability.

### **SENP3 Antibody (N-term) - References**

Muller S, et al., Nat Rev Mol Cell Biol. 2001 2(3):202-10 Review.  
Hochstrasser M. Cell. 2001 107(1):5-8. Review.  
Kahyo T, et al., Mol Cell. 2001 Sep;8(3):713-8.  
Yeh ET, et al., Gene. 2000 May 2;248(1-2):1-14. Review.  
Keane,M.M., et al., Oncogene 18 (22), 3365-3375 (1999)