

**TAS2R10 Antibody (Center)**  
**Affinity Purified Rabbit Polyclonal Antibody (Pab)**  
**Catalog # AP17340c**

**Specification**

---

**TAS2R10 Antibody (Center) - Product Information**

Application	WB,E
Primary Accession	<a href="#">O9NYW0</a>
Other Accession	<a href="#">NP_076410.1</a>
Reactivity	Human
Host	Rabbit
Clonality	Polyclonal
Isotype	Rabbit IgG
Calculated MW	35365
Antigen Region	134-160

**TAS2R10 Antibody (Center) - Additional Information**

**Gene ID** 50839

**Other Names**

Taste receptor type 2 member 10, T2R10, Taste receptor family B member 2, TRB2, TAS2R10

**Target/Specificity**

This TAS2R10 antibody is generated from rabbits immunized with a KLH conjugated synthetic peptide between 134-160 amino acids from the Central region of human TAS2R10.

**Dilution**

WB~~1:1000

E~~Use at an assay dependent concentration.

**Format**

Purified polyclonal antibody supplied in PBS with 0.09% (W/V) sodium azide. This antibody is purified through a protein A column, followed by peptide affinity purification.

**Storage**

Maintain refrigerated at 2-8°C for up to 2 weeks. For long term storage store at -20°C in small aliquots to prevent freeze-thaw cycles.

**Precautions**

TAS2R10 Antibody (Center) is for research use only and not for use in diagnostic or therapeutic procedures.

**TAS2R10 Antibody (Center) - Protein Information**

**Name** TAS2R10

**Function** Gustducin-coupled strychnine receptor implicated in the perception of bitter compounds

in the oral cavity and the gastrointestinal tract. Signals through PLCB2 and the calcium-regulated cation channel TRPM5.

**Cellular Location**

Membrane; Multi-pass membrane protein.

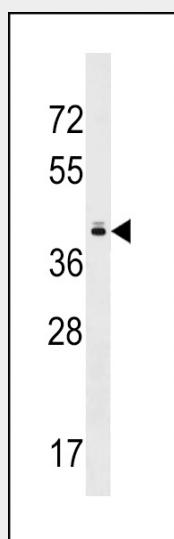
**Tissue Location**

Expressed in subsets of taste receptor cells of the tongue and palate epithelium and exclusively in gustducin-positive cells

**TAS2R10 Antibody (Center) - Protocols**

Provided below are standard protocols that you may find useful for product applications.

- [Western Blot](#)
- [Blocking Peptides](#)
- [Dot Blot](#)
- [Immunohistochemistry](#)
- [Immunofluorescence](#)
- [Immunoprecipitation](#)
- [Flow Cytometry](#)
- [Cell Culture](#)

**TAS2R10 Antibody (Center) - Images**

TAS2R10 Antibody (Center) (Cat. #AP17340c) western blot analysis in MDA-MB453 cell line lysates (35ug/lane). This demonstrates the TAS2R10 antibody detected the TAS2R10 protein (arrow).

**TAS2R10 Antibody (Center) - Background**

This gene product belongs to the family of candidate taste receptors that are members of the G-protein-coupled receptor superfamily. These proteins are specifically expressed in the taste receptor cells of the tongue and palate epithelia. They are organized in the genome in clusters and are genetically linked to loci that influence bitter perception in mice and humans. In

functional expression studies, they respond to bitter tastants. This gene maps to the taste receptor gene cluster on chromosome 12p13.

#### **TAS2R10 Antibody (Center) - References**

Go, Y., et al. Genetics 170(1):313-326(2005)  
Mueller, K.L., et al. Nature 434(7030):225-229(2005)  
Fischer, A., et al. Mol. Biol. Evol. 22(3):432-436(2005)  
Zhang, Y., et al. Cell 112(3):293-301(2003)  
Montmayeur, J.P., et al. Curr. Opin. Neurobiol. 12(4):366-371(2002)