

TRAF6 Antibody(Center)
Affinity Purified Rabbit Polyclonal Antibody (Pab)
Catalog # AP19545c**Specification**

TRAF6 Antibody(Center) - Product Information

Application	WB,E
Primary Accession	O9Y4K3
Other Accession	P70196 , Q3ZCC3 , NP_665802.1
Reactivity	Human
Predicted	Bovine, Mouse
Host	Rabbit
Clonality	Polyclonal
Isotype	Rabbit IgG
Calculated MW	59573
Antigen Region	314-343

TRAF6 Antibody(Center) - Additional Information**Gene ID** 7189**Other Names**

TNF receptor-associated factor 6, 632-, E3 ubiquitin-protein ligase TRAF6, Interleukin-1 signal transducer, RING finger protein 85, TRAF6, RNF85

Target/Specificity

This TRAF6 antibody is generated from rabbits immunized with a KLH conjugated synthetic peptide between 314-343 amino acids from the Central region of human TRAF6.

Dilution

WB~~1:1000

E~~Use at an assay dependent concentration.

Format

Purified polyclonal antibody supplied in PBS with 0.09% (W/V) sodium azide. This antibody is purified through a protein A column, followed by peptide affinity purification.

Storage

Maintain refrigerated at 2-8°C for up to 2 weeks. For long term storage store at -20°C in small aliquots to prevent freeze-thaw cycles.

Precautions

TRAF6 Antibody(Center) is for research use only and not for use in diagnostic or therapeutic procedures.

TRAF6 Antibody(Center) - Protein Information**Name** TRAF6

Synonyms RNF85

Function E3 ubiquitin ligase that, together with UBE2N and UBE2V1, mediates the synthesis of 'Lys-63'-linked-polyubiquitin chains conjugated to proteins, such as ECSIT, IKBKG, IRAK1, AKT1 and AKT2 (PubMed:[11057907](#), PubMed:[18347055](#), PubMed:[19465916](#), PubMed:[19713527](#), PubMed:[27746020](#), PubMed:[31620128](#)). Also mediates ubiquitination of free/unanchored polyubiquitin chain that leads to MAP3K7 activation (PubMed:[19675569](#)). Leads to the activation of NF-kappa-B and JUN (PubMed:[16378096](#), PubMed:[17135271](#), PubMed:[17703191](#)). Seems to also play a role in dendritic cells (DCs) maturation and/or activation (By similarity). Represses c-Myb-mediated transactivation, in B-lymphocytes (PubMed:[18093978](#), PubMed:[18758450](#)). Adapter protein that seems to play a role in signal transduction initiated via TNF receptor, IL-1 receptor and IL-17 receptor (PubMed:[12140561](#), PubMed:[19825828](#), PubMed:[8837778](#)). Regulates osteoclast differentiation by mediating the activation of adapter protein complex 1 (AP-1) and NF-kappa-B, in response to RANK-L stimulation (By similarity). Together with MAP3K8, mediates CD40 signals that activate ERK in B-cells and macrophages, and thus may play a role in the regulation of immunoglobulin production (By similarity). Acts as a regulator of the JNK and NF-kappa-B signaling pathways by initiating assembly of heterotypic 'Lys-63'-/'Lys-48'-linked branched ubiquitin chains that are then recognized by TAB2: TRAF6 catalyzes initial 'Lys-63'-linked-polyubiquitin chains that are then branched via 'Lys-48'-linked polyubiquitin by HUWE1 (PubMed:[27746020](#)). 'Lys- 63'-/'Lys-48'-linked branched ubiquitin chains protect 'Lys-63'-linkages from CYLD deubiquitination (PubMed:[27746020](#)). Participates also in the TCR signaling by ubiquitinating LAT (PubMed:[23514740](#), PubMed:[25907557](#)).

Cellular Location

Cytoplasm. Cytoplasm, cell cortex. Nucleus. Lipid droplet {ECO:0000250|UniProtKB:P70196}. Note=Found in the nuclei of some aggressive B-cell lymphoma cell lines as well as in the nuclei of both resting and activated T- and B-lymphocytes. Found in punctate nuclear body protein complexes. Ubiquitination may occur in the cytoplasm and sumoylation in the nucleus. RSAD2/viperin recruits it to the lipid droplet (By similarity).

Tissue Location

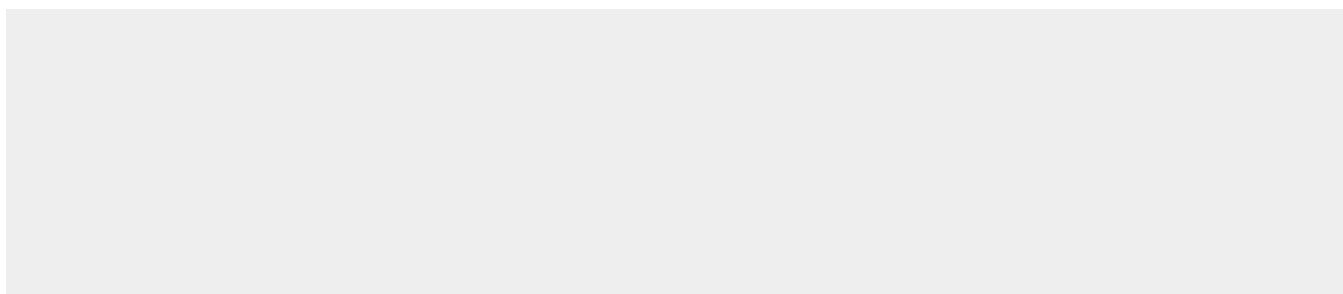
Expressed in heart, brain, placenta, lung, liver, skeletal muscle, kidney and pancreas

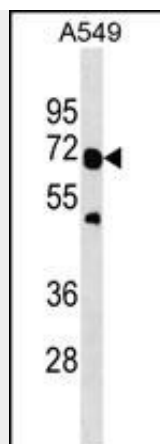
TRAF6 Antibody(Center) - Protocols

Provided below are standard protocols that you may find useful for product applications.

- [Western Blot](#)
- [Blocking Peptides](#)
- [Dot Blot](#)
- [Immunohistochemistry](#)
- [Immunofluorescence](#)
- [Immunoprecipitation](#)
- [Flow Cytometry](#)
- [Cell Culture](#)

TRAF6 Antibody(Center) - Images





TRAF6 Antibody (Center) (Cat. #AP19545c) western blot analysis in A549 cell line lysates (35ug/lane). This demonstrates the TRAF6 antibody detected the TRAF6 protein (arrow).

TRAF6 Antibody(Center) - Background

The protein encoded by this gene is a member of the TNF receptor associated factor (TRAF) protein family. TRAF proteins are associated with, and mediate signal transduction from members of the TNF receptor superfamily. This protein mediates the signaling not only from the members of the TNF receptor superfamily, but also from the members of the Toll/IL-1 family. Signals from receptors such as CD40, TNFSF11/RANCE and IL-1 have been shown to be mediated by this protein. This protein also interacts with various protein kinases including IRAK1/IRAK, SRC and PKCzeta, which provides a link between distinct signaling pathways. This protein functions as a signal transducer in the NF-kappaB pathway that activates IkappaB kinase (IKK) in response to proinflammatory cytokines. The interaction of this protein with UBE2N/UBC13, and UBE2V1/UEV1A, which are ubiquitin conjugating enzymes catalyzing the formation of polyubiquitin chains, has been found to be required for IKK activation by this protein. Two alternatively spliced transcript variants encoding identical proteins have been reported. [provided by RefSeq].

TRAF6 Antibody(Center) - References

Silva, L.K., et al. Eur. J. Hum. Genet. 18(11):1221-1227(2010)
Hinz, M., et al. Mol. Cell 40(1):63-74(2010)
Shimada, M., et al. Hum. Genet. 128(4):433-441(2010)
Bailey, S.D., et al. Diabetes Care 33(10):2250-2253(2010)
Stachon, P., et al. PLoS ONE 5 (7), E11589 (2010) :

TRAF6 Antibody(Center) - Citations

- [Up-regulated expression of CD147 gene in malignant bone tumor and the possible induction mechanism during osteoclast formation.](#)
- [MicroRNA-351 inhibits denervation-induced muscle atrophy by targeting TRAF6.](#)