

(DANRE) becn1 Antibody (C-Term)
Purified Rabbit Polyclonal Antibody (Pab)
Catalog # AP21289b

Specification

(DANRE) becn1 Antibody (C-Term) - Product Information

Application	WB,E
Primary Accession	A2A135
Reactivity	Zebrafish
Host	Rabbit
Clonality	polyclonal
Isotype	Rabbit Ig

(DANRE) becn1 Antibody (C-Term) - Additional Information

Target/Specificity

This DANRE becn1 antibody is generated from a rabbit immunized with a KLH conjugated synthetic peptide between 388-421 amino acids from the human region of DANRE becn1.

Dilution

WB ~ ~ 1:2000

Format

Purified polyclonal antibody supplied in PBS with 0.09% (W/V) sodium azide. This antibody is purified through a protein A column, followed by peptide affinity purification.

Storage

Maintain refrigerated at 2-8°C for up to 2 weeks. For long term storage store at -20°C in small aliquots to prevent freeze-thaw cycles.

Precautions

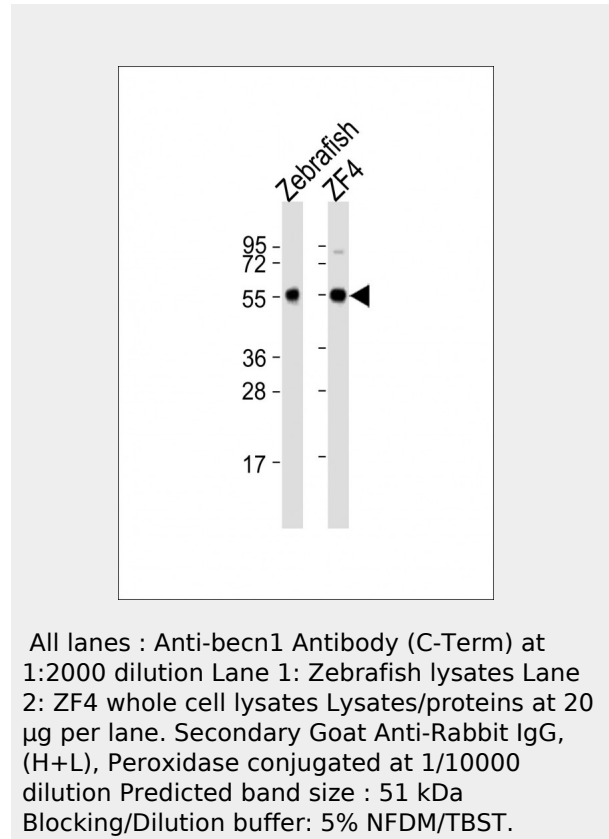
(DANRE) becn1 Antibody (C-Term) is for research use only and not for use in diagnostic or therapeutic procedures.

(DANRE) becn1 Antibody (C-Term) - Protein Information

(DANRE) becn1 Antibody (C-Term) - Protocols

Provided below are standard protocols that you may find useful for product applications.

- [Western Blot](#)
- [Blocking Peptides](#)



- [Dot Blot](#)
- [Immunohistochemistry](#)
- [Immunofluorescence](#)
- [Immunoprecipitation](#)
- [Flow Cytometry](#)
- [Cell Culture](#)