

**PPP1R13L Antibody (Center)**  
**Purified Rabbit Polyclonal Antibody (Pab)**  
**Catalog # AP21505c**

**Specification**

---

**PPP1R13L Antibody (Center) - Product Information**

Application	WB,E
Primary Accession	<a href="#">Q8WUF5</a>
Reactivity	Human
Host	Rabbit
Clonality	polyclonal
Isotype	Rabbit IgG
Calculated MW	89091

**PPP1R13L Antibody (Center) - Additional Information**

**Gene ID** 10848

**Other Names**

RelA-associated inhibitor, Inhibitor of ASPP protein, Protein iASPP, NFkB-interacting protein 1, PPP1R13B-like protein, PPP1R13L, IASPP, NKIP1, PPP1R13BL, RAI

**Target/Specificity**

This PPP1R13L antibody is generated from a rabbit immunized with a KLH conjugated synthetic peptide between 455-485 amino acids from the Central region of human PPP1R13L.

**Dilution**

WB~~1:2000

**Format**

Purified polyclonal antibody supplied in PBS with 0.09% (W/V) sodium azide. This antibody is purified through a protein A column, followed by peptide affinity purification.

**Storage**

Maintain refrigerated at 2-8°C for up to 2 weeks. For long term storage store at -20°C in small aliquots to prevent freeze-thaw cycles.

**Precautions**

PPP1R13L Antibody (Center) is for research use only and not for use in diagnostic or therapeutic procedures.

**PPP1R13L Antibody (Center) - Protein Information**

**Name** PPP1R13L

**Synonyms** IASPP, NKIP1, PPP1R13BL, RAI

**Function** Regulator that plays a central role in regulation of apoptosis and transcription via its

interaction with NF-kappa-B and p53/TP53 proteins. Blocks transcription of HIV-1 virus by inhibiting the action of both NF-kappa-B and SP1. Also inhibits p53/TP53 function, possibly by preventing the association between p53/TP53 and ASPP1 or ASPP2, and therefore suppressing the subsequent activation of apoptosis (PubMed:[12524540](#)).

#### **Cellular Location**

Cytoplasm. Nucleus Note=Predominantly cytoplasmic but also nuclear

#### **Tissue Location**

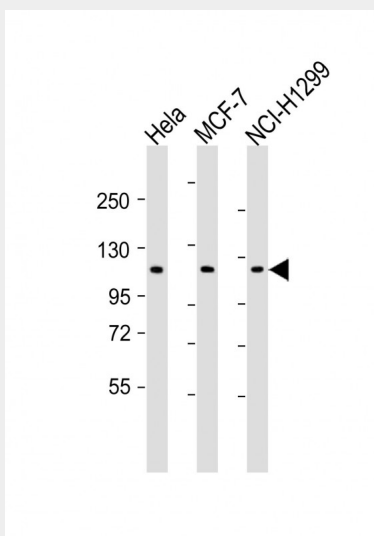
Highly expressed in heart, placenta and prostate. Weakly expressed in brain, liver, skeletal muscle, testis and peripheral blood leukocyte.

### **PPP1R13L Antibody (Center) - Protocols**

Provided below are standard protocols that you may find useful for product applications.

- [Western Blot](#)
- [Blocking Peptides](#)
- [Dot Blot](#)
- [Immunohistochemistry](#)
- [Immunofluorescence](#)
- [Immunoprecipitation](#)
- [Flow Cytometry](#)
- [Cell Culture](#)

### **PPP1R13L Antibody (Center) - Images**



All lanes : Anti-PPP1R13L Antibody (Center) at 1:2000 dilution Lane 1: HeLa whole cell lysates Lane 2: MCF-7 whole cell lysates Lane 3: NCI-H1299 whole cell lysates Lysates/proteins at 20 µg per lane. Secondary Goat Anti-Rabbit IgG, (H+L), Peroxidase conjugated at 1/10000 dilution Predicted band size : 89 kDa Blocking/Dilution buffer: 5% NFDm/TBST.

### **PPP1R13L Antibody (Center) - Background**

Regulator that plays a central role in regulation of apoptosis and transcription via its interaction with NF-kappa-B and p53/TP53 proteins. Blocks transcription of HIV-1 virus by inhibiting the action of both NF-kappa-B and SP1. Also inhibits p53/TP53 function, possibly by preventing the association

between p53/TP53 and ASPP1 or ASPP2, and therefore suppressing the subsequent activation of apoptosis.

#### **PPP1R13L Antibody (Center) - References**

Slee E.A.,et al.Oncogene 23:9007-9016(2004).

Herron B.J.,et al.Submitted (DEC-2004) to the EMBL/GenBank/DDBJ databases.

Yang J.-P.,et al.J. Biol. Chem. 274:15662-15670(1999).

Takada N.,et al.J. Virol. 76:8019-8030(2002).

Bergamaschi D.,et al.Nat. Genet. 33:162-167(2003).