

**PLAA Antibody (Center)**  
**Purified Rabbit Polyclonal Antibody (Pab)**  
**Catalog # AP22224c**

**Specification**

**PLAA Antibody (Center) - Product Information**

Application	<b>WB,E</b>
Primary Accession	<a href="#">Q9Y263</a>
Reactivity	<b>Human</b>
Host	<b>Rabbit</b>
Clonality	<b>polyclonal</b>
Isotype	<b>Rabbit Ig</b>
Clone Names	<b>RB56657</b>
Calculated MW	<b>87157</b>

**PLAA Antibody (Center) - Additional Information**

**Gene ID** 9373

**Other Names**

Phospholipase A-2-activating protein, PLA2P, PLAP, PLAA, PLAP

**Target/Specificity**

This PLAA antibody is generated from a rabbit immunized with a KLH conjugated synthetic peptide between 294-328 amino acids from the Central region of human PLAA.

**Dilution**

WB~~1:2000

**Format**

Purified polyclonal antibody supplied in PBS with 0.09% (W/V) sodium azide. This antibody is purified through a protein A column, followed by peptide affinity purification.

**Storage**

Maintain refrigerated at 2-8°C for up to 2 weeks. For long term storage store at -20°C in small aliquots to prevent freeze-thaw cycles.

**Precautions**

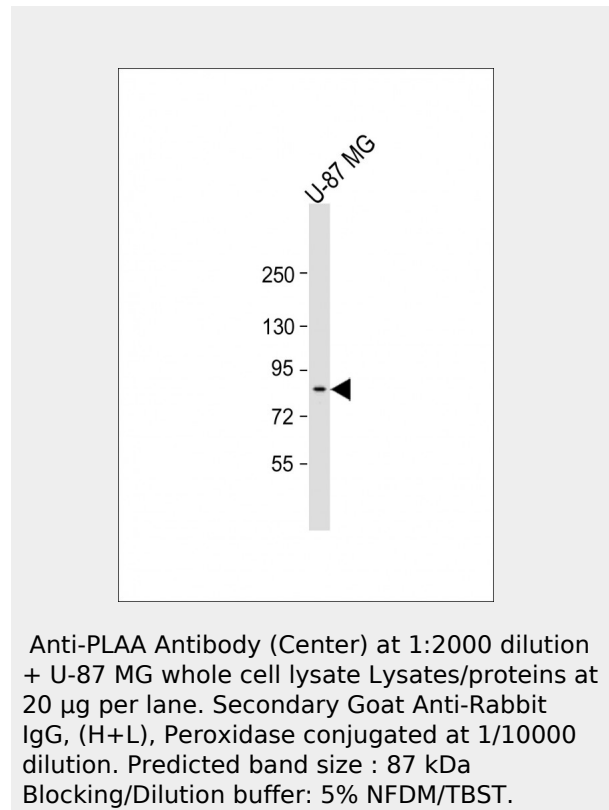
PLAA Antibody (Center) is for research use only and not for use in diagnostic or therapeutic procedures.

**PLAA Antibody (Center) - Protein Information**

**Name** PLAA

**Synonyms** PLAP

**Function**



**PLAA Antibody (Center) - Background**

Involved in the maintenance of ubiquitin levels.

**PLAA Antibody (Center) - References**

Ota T.,et al.Nat. Genet. 36:40-45(2004).  
Bechtel S.,et al.BMC Genomics 8:399-399(2007).  
Humphray S.J.,et al.Nature 429:369-374(2004).  
Beatty B.,et al.Genomics 62:529-532(1999).  
Totoki Y.,et al.Submitted (APR-2005) to the EMBL/GenBank/DDBJ databases.

Plays a role in protein ubiquitination, sorting and degradation through its association with VCP (PubMed:<a href="http://www.uniprot.org/citations/27753622" target="\_blank">27753622</a>). Involved in ubiquitin-mediated membrane proteins trafficking to late endosomes in an ESCRT-dependent manner, and hence plays a role in synaptic vesicle recycling (By similarity). May play a role in macroautophagy, regulating for instance the clearance of damaged lysosomes (PubMed:<a href="http://www.uniprot.org/citations/27753622" target="\_blank">27753622</a>). Plays a role in cerebellar Purkinje cell development (By similarity). Positively regulates cytosolic and calcium-independent phospholipase A2 activities in a tumor necrosis factor alpha (TNF-alpha)- or lipopolysaccharide (LPS)-dependent manner, and hence prostaglandin E2 biosynthesis (PubMed:<a href="http://www.uniprot.org/citations/18291623" target="\_blank">18291623</a>, PubMed:<a href="http://www.uniprot.org/citations/28007986" target="\_blank">28007986</a>).

#### **Cellular Location**

Nucleus. Cytoplasm. Cell junction, synapse {ECO:0000250|UniProtKB:P27612}.  
Note=Recruited to damaged lysosomes decorated with K48-linked ubiquitin chains

### **PLAA Antibody (Center) - Protocols**

Provided below are standard protocols that you may find useful for product applications.

- [Western Blot](#)
- [Blocking Peptides](#)
- [Dot Blot](#)
- [Immunohistochemistry](#)
- [Immunofluorescence](#)
- [Immunoprecipitation](#)
- [Flow Cytometry](#)
- [Cell Culture](#)