

**MYPT1 (Thr696) Antibody**  
Purified Rabbit Polyclonal Antibody (Pab)  
Catalog # AP22225a

**Specification**

**MYPT1 (Thr696) Antibody - Product Information**

Application	WB,E
Primary Accession	<a href="#">O14974</a>
Other Accession	<a href="#">Q90623</a> , <a href="#">Q6DRG7</a> , <a href="#">Q9DBR7</a> , <a href="#">Q10728</a>
Reactivity	Human, Mouse, Rat
Predicted Host	Chicken, Zebrafish
Clonality	polyclonal
Isotype	Rabbit Ig
Clone Names	RB56565
Calculated MW	115281

**MYPT1 (Thr696) Antibody - Additional Information**

**Gene ID** 4659

**Other Names**

Protein phosphatase 1 regulatory subunit 12A, Myosin phosphatase-targeting subunit 1, Myosin phosphatase target subunit 1, Protein phosphatase myosin-binding subunit, PPP1R12A, MBS, MYPT1

**Target/Specificity**

This MYPT1 (Thr696) antibody is generated from a rabbit immunized with a KLH conjugated synthetic peptide between 669-702 amino acids from the human MYPT1.

**Dilution**

WB ~ ~ 1:2000

**Format**

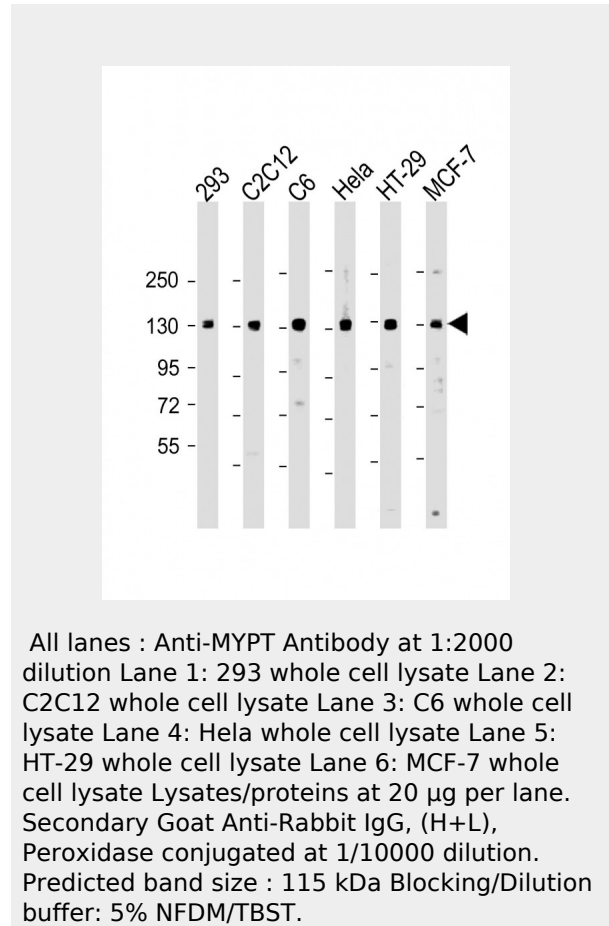
Purified polyclonal antibody supplied in PBS with 0.09% (W/V) sodium azide. This antibody is purified through a protein A column, followed by peptide affinity purification.

**Storage**

Maintain refrigerated at 2-8°C for up to 2 weeks. For long term storage store at -20°C in small aliquots to prevent freeze-thaw cycles.

**Precautions**

MYPT1 (Thr696) Antibody is for research use only and not for use in diagnostic or therapeutic procedures.



**MYPT1 (Thr696) Antibody - Background**

Key regulator of protein phosphatase 1C (PPP1C). Mediates binding to myosin. As part of the PPP1C complex, involved in dephosphorylation of PLK1. Capable of inhibiting HIF1AN- dependent suppression of HIF1A activity.

**MYPT1 (Thr696) Antibody - References**

- Takahashi N.,et al.Genomics 44:150-152(1997).
- Guo J.H.,et al.Submitted (DEC-2001) to the EMBL/GenBank/DDBJ databases.
- Xia D.,et al.Submitted (SEP-2003) to the EMBL/GenBank/DDBJ databases.
- Ota T.,et al.Nat. Genet. 36:40-45(2004).
- Scherer S.E.,et al.Nature 440:346-351(2006).

## **MYPT1 (Thr696) Antibody - Protein Information**

**Name** PPP1R12A ([HGNC:7618](#))

### **Function**

Key regulator of protein phosphatase 1C (PPP1C). Mediates binding to myosin. As part of the PPP1C complex, involved in dephosphorylation of PLK1. Capable of inhibiting HIF1AN- dependent suppression of HIF1A activity.

### **Cellular Location**

Cytoplasm. Cytoplasm, cytoskeleton, stress fiber. Note=Also along actomyosin filaments.

### **Tissue Location**

Expressed in striated muscles, specifically in type 2a fibers (at protein level).

## **MYPT1 (Thr696) Antibody - Protocols**

Provided below are standard protocols that you may find useful for product applications.

- [Western Blot](#)
- [Blocking Peptides](#)
- [Dot Blot](#)
- [Immunohistochemistry](#)
- [Immunofluorescence](#)
- [Immunoprecipitation](#)
- [Flow Cytometry](#)
- [Cell Culture](#)