

INTS3 Antibody (Center)
Purified Rabbit Polyclonal Antibody (Pab)
Catalog # AP22238c**Specification**

INTS3 Antibody (Center) - Product Information

Application	WB, FC,E
Primary Accession	Q68E01
Other Accession	Q7TPD0 , Q5RE70
Reactivity	Human, Mouse
Predicted	Mouse
Host	Rabbit
Clonality	polyclonal
Isotype	Rabbit IgG
Calculated MW	118070

INTS3 Antibody (Center) - Additional Information**Gene ID** 65123**Other Names**

Integrator complex subunit 3, Int3, SOSS complex subunit A, Sensor of single-strand DNA complex subunit A, SOSS-A, Sensor of ssDNA subunit A, INTS3, C1orf193, C1orf60

Target/Specificity

This INTS3 antibody is generated from a rabbit immunized with a KLH conjugated synthetic peptide between 518-551 amino acids from the Central region of human INTS3.

Dilution

WB~~1:2000

FC~~1:25

Format

Purified polyclonal antibody supplied in PBS with 0.09% (W/V) sodium azide. This antibody is purified through a protein A column, followed by peptide affinity purification.

Storage

Maintain refrigerated at 2-8°C for up to 2 weeks. For long term storage store at -20°C in small aliquots to prevent freeze-thaw cycles.

Precautions

INTS3 Antibody (Center) is for research use only and not for use in diagnostic or therapeutic procedures.

INTS3 Antibody (Center) - Protein Information**Name** INTS3

Synonyms C1orf193, C1orf60

Function Component of the Integrator (INT) complex. The Integrator complex is involved in the small nuclear RNAs (snRNA) U1 and U2 transcription and in their 3'-box-dependent processing. The Integrator complex is associated with the C-terminal domain (CTD) of RNA polymerase II largest subunit (POLR2A) and is recruited to the U1 and U2 snRNAs genes (Probable). Mediates recruitment of cytoplasmic dynein to the nuclear envelope, probably as component of the INT complex (PubMed:[23904267](#)).

Cellular Location

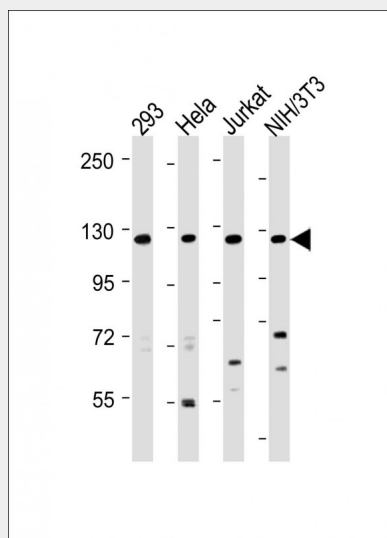
Nucleus. Cytoplasm. Note=Localizes to nuclear foci following DNA damage

INTS3 Antibody (Center) - Protocols

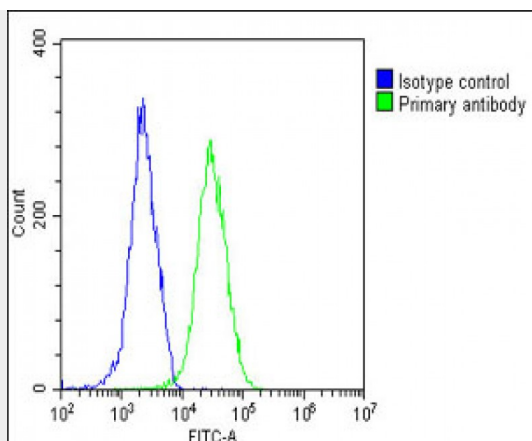
Provided below are standard protocols that you may find useful for product applications.

- [Western Blot](#)
- [Blocking Peptides](#)
- [Dot Blot](#)
- [Immunohistochemistry](#)
- [Immunofluorescence](#)
- [Immunoprecipitation](#)
- [Flow Cytometry](#)
- [Cell Culture](#)

INTS3 Antibody (Center) - Images



All lanes : Anti-INTS3 Antibody (Center) at 1:2000 dilution Lane 1: 293 whole cell lysate Lane 2: HeLa whole cell lysate Lane 3: Jurkat whole cell lysate Lane 4: NIH/3T3 whole cell lysate Lysates/proteins at 20 µg per lane. Secondary Goat Anti-Rabbit IgG, (H+L), Peroxidase conjugated at 1/10000 dilution. Predicted band size : 118 kDa Blocking/Dilution buffer: 5% NFD/MTBST.



Overlay histogram showing Hela cells stained with AP22238c(green line). The cells were fixed with 2% paraformaldehyde (10 min) and then permeabilized with 90% methanol for 10 min. The cells were then incubated in 2% bovine serum albumin to block non-specific protein-protein interactions followed by the antibody (AP22238c, 1:25 dilution) for 60 min at 37°C. The secondary antibody used was Goat-Anti-Rabbit IgG, DyLight® 488 Conjugated Highly Cross-Adsorbed(OE188374) at 1/200 dilution for 40 min at 37°C. Isotype control antibody (blue line) was rabbit IgG1 (1µg/1x10⁶ cells) used under the same conditions. Acquisition of >10, 000 events was performed.

INTS3 Antibody (Center) - Background

Component of the Integrator complex. The Integrator complex is involved in the small nuclear RNAs (snRNA) U1 and U2 transcription and in their 3'-box-dependent processing. The Integrator complex is associated with the C-terminal domain (CTD) of RNA polymerase II largest subunit (POLR2A) and is recruited to the U1 and U2 snRNAs genes.

INTS3 Antibody (Center) - References

- Bechtel S.,et al.BMC Genomics 8:399-399(2007).
- Ota T.,et al.Nat. Genet. 36:40-45(2004).
- Gregory S.G.,et al.Nature 441:315-321(2006).
- Mural R.J.,et al.Submitted (SEP-2005) to the EMBL/GenBank/DDBJ databases.
- Baillat D.,et al.Cell 123:265-276(2005).