

**MKS1 Antibody (N-Term)**  
**Purified Rabbit Polyclonal Antibody (Pab)**  
**Catalog # AP22331a****Specification**

---

**MKS1 Antibody (N-Term) - Product Information**

Application	WB,E
Primary Accession	<a href="#">Q9NXB0</a>
Reactivity	Human
Host	Rabbit
Clonality	polyclonal
Isotype	Rabbit IgG
Calculated MW	64528

**MKS1 Antibody (N-Term) - Additional Information****Gene ID** 54903**Other Names**

Meckel syndrome type 1 protein, MKS1

**Target/Specificity**

This MKS1 antibody is generated from a rabbit immunized with a KLH conjugated synthetic peptide between 38-72 amino acids from the human region of human MKS1.

**Dilution**

WB~~1:2000

E~~Use at an assay dependent concentration.

**Format**

Purified polyclonal antibody supplied in PBS with 0.09% (W/V) sodium azide. This antibody is purified through a protein A column, followed by peptide affinity purification.

**Storage**

Maintain refrigerated at 2-8°C for up to 2 weeks. For long term storage store at -20°C in small aliquots to prevent freeze-thaw cycles.

**Precautions**

MKS1 Antibody (N-Term) is for research use only and not for use in diagnostic or therapeutic procedures.

**MKS1 Antibody (N-Term) - Protein Information****Name** MKS1

**Function** Component of the tectonic-like complex, a complex localized at the transition zone of primary cilia and acting as a barrier that prevents diffusion of transmembrane proteins between the cilia and plasma membranes. Involved in centrosome migration to the apical cell surface

during early ciliogenesis. Required for ciliary structure and function, including a role in regulating length and appropriate number through modulating centrosome duplication. Required for cell branching morphology.

#### Cellular Location

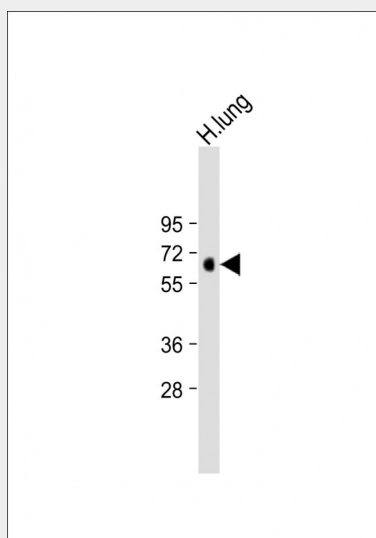
Cytoplasm, cytoskeleton, cilium basal body. Cytoplasm, cytoskeleton, microtubule organizing center, centrosome Note=Localizes at the transition zone, a region between the basal body and the ciliary axoneme.

#### MKS1 Antibody (N-Term) - Protocols

Provided below are standard protocols that you may find useful for product applications.

- [Western Blot](#)
- [Blocking Peptides](#)
- [Dot Blot](#)
- [Immunohistochemistry](#)
- [Immunofluorescence](#)
- [Immunoprecipitation](#)
- [Flow Cytometry](#)
- [Cell Culture](#)

#### MKS1 Antibody (N-Term) - Images



Anti-MKS1 Antibody (N-Term) at 1:2000 dilution + Human lung lysate Lysates/proteins at 20 µg per lane. Secondary Goat Anti-Rabbit IgG, (H+L), Peroxidase conjugated at 1/10000 dilution. Predicted band size : 65 kDa Blocking/Dilution buffer: 5% NFDm/TBST.

#### MKS1 Antibody (N-Term) - Background

Component of the tectonic-like complex, a complex localized at the transition zone of primary cilia and acting as a barrier that prevents diffusion of transmembrane proteins between the cilia and plasma membranes. Involved in centrosome migration to the apical cell surface during early ciliogenesis. Required for ciliary structure and function, including a role in regulating length and appropriate number through modulating centrosome duplication. Required for cell branching morphology.

**MKS1 Antibody (N-Term) - References**

Kyttaelae M.,et al.Nat. Genet. 38:155-157(2006).  
Ota T.,et al.Nat. Genet. 36:40-45(2004).  
Zody M.C.,et al.Nature 440:1045-1049(2006).  
Ebert L.,et al.Submitted (JUN-2004) to the EMBL/GenBank/DDBJ databases.  
Dawe H.R.,et al.Hum. Mol. Genet. 16:173-186(2007).