

Phospho-rat CCNB3(S283) Antibody
Affinity Purified Rabbit Polyclonal Antibody (Pab)
Catalog # AP3880a

Specification

Phospho-rat CCNB3(S283) Antibody - Product Information

Application	DB,E
Primary Accession	F1LVT0
Reactivity	Rat
Host	Rabbit
Clonality	Polyclonal
Isotype	Rabbit IgG
Calculated MW	159338

Phospho-rat CCNB3(S283) Antibody - Additional Information

Other Names

Protein Ccnb3 ;Ccnb3;

Target/Specificity

This rat CCNB3 Antibody is generated from rabbits immunized with a KLH conjugated synthetic phosphopeptide corresponding to amino acid residues surrounding S283 of rat CCNB3.

Dilution

DB~~1:500

Format

Purified polyclonal antibody supplied in PBS with 0.09% (W/V) sodium azide. This antibody is purified through a protein A column, followed by peptide affinity purification.

Storage

Maintain refrigerated at 2-8°C for up to 2 weeks. For long term storage store at -20°C in small aliquots to prevent freeze-thaw cycles.

Precautions

Phospho-rat CCNB3(S283) Antibody is for research use only and not for use in diagnostic or therapeutic procedures.

Phospho-rat CCNB3(S283) Antibody - Protein Information

Name F1LVT0

Cellular Location

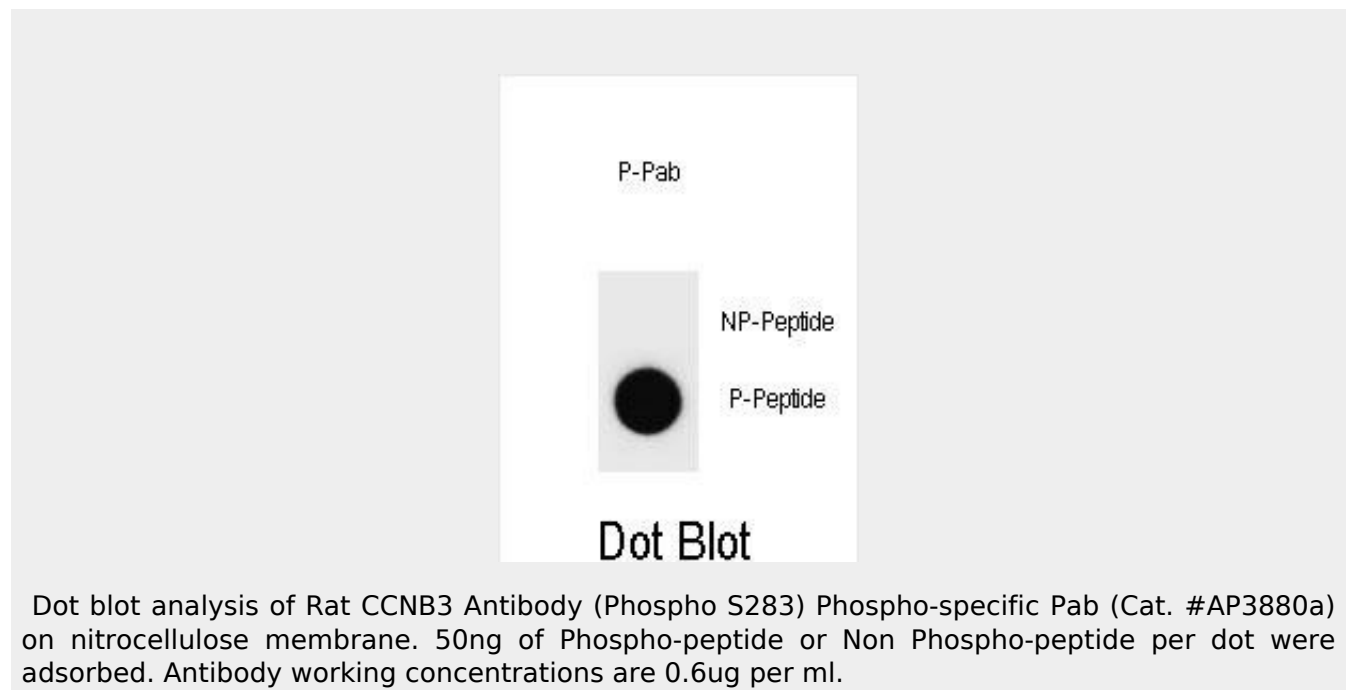
Nucleus {ECO:0000256|ARBA:ARBA00004123}.

Phospho-rat CCNB3(S283) Antibody - Protocols

Provided below are standard protocols that you may find useful for product applications.

- [Western Blot](#)
- [Blocking Peptides](#)
- [Dot Blot](#)
- [Immunohistochemistry](#)
- [Immunofluorescence](#)
- [Immunoprecipitation](#)
- [Flow Cytometry](#)
- [Cell Culture](#)

Phospho-rat CCNB3(S283) Antibody - Images



Phospho-rat CCNB3(S283) Antibody - Background

Cyclins are positive regulatory subunits of the cyclin-dependent kinases (CDKs), and thereby play an essential role in the control of the cell cycle, notably via their destruction during cell division. Its tissue specificity suggest that it may be required during early meiotic prophase I (By similarity).