

**Rabbit Anti-IL-17RB Polyclonal Antibody**  
**Purified Rabbit Polyclonal Antibody (Pab)**  
**Catalog # AP52329****Specification**

---

**Rabbit Anti-IL-17RB Polyclonal Antibody - Product Information**

Application	WB, E
Primary Accession	<a href="#">Q9NRM6</a>
Reactivity	Human, Mouse, Rat
Host	Rabbit
Clonality	Polyclonal

**Rabbit Anti-IL-17RB Polyclonal Antibody - Additional Information****Gene ID** 55540**Other Names**

CRL4; EVI27; IL17BR; IL17RH1; Interleukin-17 receptor B; IL-17 receptor B; IL-17RB; Cytokine receptor-like 4; IL-17 receptor homolog 1; IL-17Rh1; Interleukin-17B receptor; IL-17B receptor; IL17RB; UNQ251/PRO19612

**Dilution**

<span class = "dilution\_WB">WB~1:100~1:500</span><br \><span class = "dilution\_E">E~N/A</span>

**Format**

0.01M TBS(pH7.4), 0.09% (W/V) sodium azide and 50% Glyce

**Storage**

Store at -20 °C for one year. Avoid repeated freeze/thaw cycles. When reconstituted in sterile pH 7.4 0.01M PBS or diluent of antibody the antibody is stable for at least two weeks at 2-4 °C.

**Rabbit Anti-IL-17RB Polyclonal Antibody - Protein Information****Name** IL17RB**Synonyms** CRL4, EVI27, IL17BR**Function**

Receptor for the pro-inflammatory cytokines IL17B and IL17E. May play a role in controlling the growth and/or differentiation of hematopoietic cells.

**Cellular Location**

[Isoform 1]: Cell membrane; Single-pass type I membrane protein

**Tissue Location**

Expressed in several endocrine tissues, mostly in fetal and adult liver, kidney, pancreas, testis, colon, brain and small intestine; not detected in peripheral blood leukocytes, lymphoid organs, and

most cell lines

### Rabbit Anti-IL-17RB Polyclonal Antibody - Protocols

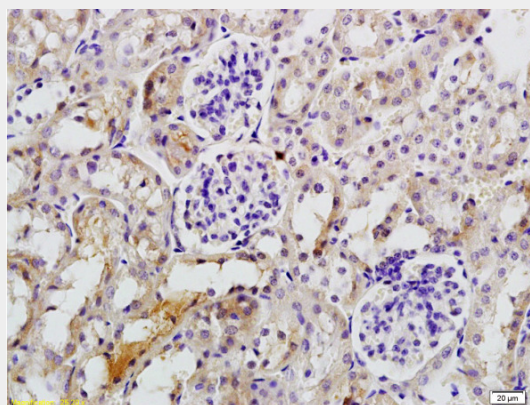
Provided below are standard protocols that you may find useful for product applications.

- [Western Blot](#)
- [Blocking Peptides](#)
- [Dot Blot](#)
- [Immunohistochemistry](#)
- [Immunofluorescence](#)
- [Immunoprecipitation](#)
- [Flow Cytometry](#)
- [Cell Culture](#)

### Rabbit Anti-IL-17RB Polyclonal Antibody - Images



L1 rat kidney lysates and L2 rat brain lysates lysates probed with Anti- IL-17RB Polyclonal Antibody, Unconjugated (AP52329) at 1:200 in 4°C. Followed by conjugation to secondary antibody at 1:3000 90min in 37°C. Predicted band: 33kD/55kD Observed band size: 35kD



Antigen: 0.2ug/100ul Primary: Antiserum, 1:500, 1:1000, 1:2000, 1:4000, 1:8000, 1:16000, 1:32000; Secondary: HRP conjugated Goat-Anti-Rabbit IgG at 1: 5000; TMB staining; Read the data in MicroplateReader by 450

### Rabbit Anti-IL-17RB Polyclonal Antibody - Background

Receptor for the proinflammatory cytokines IL17B and IL17E. May play a role in controlling the

growth and/or differentiation of hematopoietic cells.