

beta Actin Antibody
Purified Mouse Monoclonal Antibody (Mab)
Catalog # AP53270

Specification

beta Actin Antibody - Product Information

Application	WB
Primary Accession	P60709
Reactivity	Human, Mouse, Neisseria Gonorrhoeae
Host	Mouse
Clonality	Monoclonal
Isotype	IgG3
Calculated MW	45 KDa

beta Actin Antibody - Additional Information

Gene ID 60

Other Names

A X actin like protein;ACTB;ACTB_HUMAN;Actin;Actin cytoplasmic 1;Actx;b actin;b-actin;Beta cytoskeletal actin;Beta-actin;cytoplasmic 1;Melanoma X actin;N-terminally processed;PS1TP5 binding protein 1;PS1TP5BP1.

Dilution

WB~~1:1500

Format

Purified mouse monoclonal in PB(pH 7.4) containing with 0.09% (W/V) sodium azide,50% glycerol and 1mg/ml BSA.

Storage

Store at -20 °C.Stable for 12 months from date of receipt

beta Actin Antibody - Protein Information

Name ACTB

Function

Actin is a highly conserved protein that polymerizes to produce filaments that form cross-linked networks in the cytoplasm of cells (PubMed: [25255767](http://www.uniprot.org/citations/25255767), PubMed: [29581253](http://www.uniprot.org/citations/29581253)). Actin exists in both monomeric (G-actin) and polymeric (F-actin) forms, both forms playing key functions, such as cell motility and contraction (PubMed: [29581253](http://www.uniprot.org/citations/29581253)). In addition to their role in the cytoplasmic cytoskeleton, G- and F- actin also localize in the nucleus, and regulate gene transcription and motility and repair of damaged DNA (PubMed: [29925947](http://www.uniprot.org/citations/29925947)). Part of the ACTR1A/ACTB filament around which the dynactin complex is built. The dynactin multiprotein

complex activates the molecular motor dynein for ultra-processive transport along microtubules (By similarity).

Cellular Location

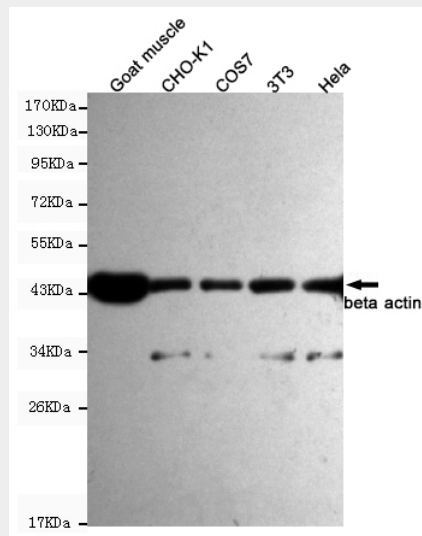
Cytoplasm, cytoskeleton. Nucleus Note=Localized in cytoplasmic mRNP granules containing untranslated mRNAs.

beta Actin Antibody - Protocols

Provided below are standard protocols that you may find useful for product applications.

- [Western Blot](#)
- [Blocking Peptides](#)
- [Dot Blot](#)
- [Immunohistochemistry](#)
- [Immunofluorescence](#)
- [Immunoprecipitation](#)
- [Flow Cytometry](#)
- [Cell Culture](#)

beta Actin Antibody - Images



Western blot detection of beta actin in HeLa,3T3,COS7,CHO-k1 and Goat muscle cell lysates using beta actin mouse mAb (1:1500 diluted).Predicted band size:45KDa.Observed band size:45KDa.

beta Actin Antibody - Background

Actins are highly conserved proteins that are involved in various types of cell motility and are ubiquitously expressed in all eukaryotic cells.

beta Actin Antibody - References

- Ponte P.,et al.Nucleic Acids Res. 12:1687-1696(1984).
Nakajima-Iijima S.,et al.Proc. Natl. Acad. Sci. U.S.A. 82:6133-6137(1985).
Ohmori H.,et al.J. Cell Biol. 116:933-941(1992).
Hillier L.W.,et al.Nature 424:157-164(2003).
Gevaert K.,et al.Nat. Biotechnol. 21:566-569(2003).

