

**His Tag Antibody**  
**Purified Rabbit Polyclonal Antibody (Pab)**  
**Catalog # AP6996A****Specification**

---

**His Tag Antibody - Product Information**

Application	WB,E
Reactivity	Human
Host	Rabbit
Clonality	Polyclonal
Isotype	Rabbit IgG

**His Tag Antibody - Additional Information****Other Names**

Poly-His, Hexa-HIS, Hexa-Histidine

**Target/Specificity**

Poly-HIS peptide were used to produced this antibody.

**Dilution**

WB~~1:1000

**Format**

Purified polyclonal antibody supplied in PBS with 0.09% (W/V) sodium azide. This antibody is purified through a protein A column, followed by peptide affinity purification.

**Storage**

Maintain refrigerated at 2-8°C for up to 2 weeks. For long term storage store at -20°C in small aliquots to prevent freeze-thaw cycles.

**Precautions**

His Tag Antibody is for research use only and not for use in diagnostic or therapeutic procedures.

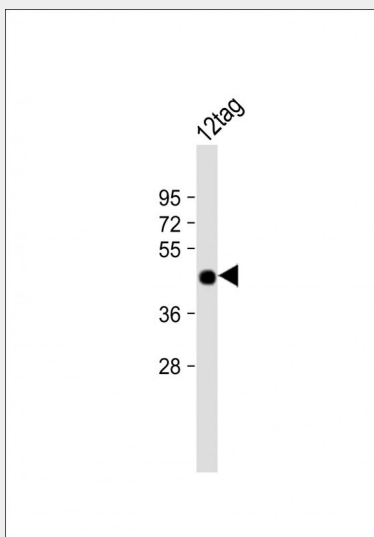
**His Tag Antibody - Protein Information****His Tag Antibody - Protocols**

Provided below are standard protocols that you may find useful for product applications.

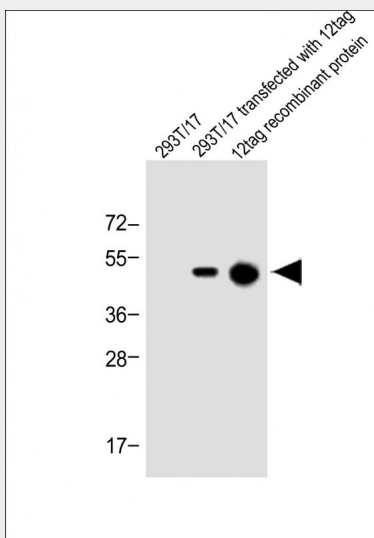
- [Western Blot](#)
- [Blocking Peptides](#)
- [Dot Blot](#)
- [Immunohistochemistry](#)
- [Immunofluorescence](#)
- [Immunoprecipitation](#)

- [Flow Cytometry](#)
- [Cell Culture](#)

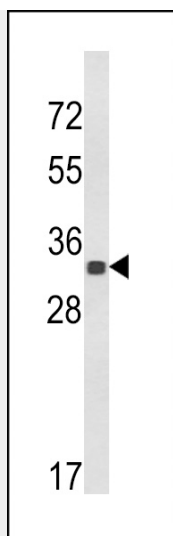
## His Tag Antibody - Images



Anti-His Tag at 1:8000 dilution + 12tag recombination protein Lysates/proteins at 20 ng per lane. Secondary Goat Anti-Rabbit IgG, (H+L), Peroxidase conjugated at 1/10000 dilution. Predicted band size : 42 kDa Blocking/Dilution buffer: 5% NFDM/TBST.



All lanes : Anti-His Tag Antibody at 1:1000 dilution Lane 1: 293T/17 whole cell lysate Lane 2: 293T/17 transfected with 12tag whole cell lysate Lane 3: 12tag recombinant protein Lysates/proteins at 1µg per lane. Secondary Goat Anti-Rabbit IgG, (H+L), Peroxidase conjugated at 1/10000 dilution. Predicted band size : 45 kDa Blocking/Dilution buffer: 5% NFDM/TBST.



Western blot analysis of His Tag Antibody (Cat. #AP6996a) in his-tag TBB1 protein (35ug/lane). His-tag TBB1 (arrow) was detected using the purified Pab.

### His Tag Antibody - Background

Epitope tags consisting of short sequences recognized by well-characterized monoclonal or polyclonal antibodies have been widely used in the study of protein expression in various systems. The 6xHIS tag (HHHHHH), recognized by the monoclonal or polyclonal antibody provides an established example of this application. 6xHIS-tagged fusion proteins are easily purified by affinity chromatography using Nickel-Sepharose resin. Abgent's anti-6xHIS polyclonal antibody provides a simple solution to detect the expression of HIS-tagged fusion proteins.

### His Tag Antibody - References

Hochuli E, Doebeli H, and Schacher A. New metal chelate absorbent selective for proteins and peptides containing neighboring histidine residues. J. Chromatogr. 1987;411:177-184.

### His Tag Antibody - Citations

- [Immune responses of channel catfish following the stimulation of three recombinant flagellins of Yersinia ruckeri in vitro and in vivo.](#)