

NP1(Nptx1) Antibody (Center)
Purified Rabbit Polyclonal Antibody (Pab)
Catalog # AP7272c

Specification

NP1(Nptx1) Antibody (Center) - Product Information

Application	WB, IHC-P,E
Primary Accession	P47971
Other Accession	O62443 , O15818
Reactivity	Human, Rat
Predicted	Mouse
Host	Rabbit
Clonality	Polyclonal
Isotype	Rabbit IgG
Antigen Region	174-203

NP1(Nptx1) Antibody (Center) - Additional Information

Gene ID 266777

Other Names

Neuronal pentraxin-1, NP1, 47 kDa taipoxin-binding protein, Neuronal pentraxin I, NP-I, Nptx1

Target/Specificity

This NP1(Nptx1) antibody is generated from rabbits immunized with a KLH conjugated synthetic peptide between 174-203 amino acids from the Central region of rat NP1(Nptx1).

Dilution

WB~~1:1000
IHC-P~~1:50~100

Format

Purified polyclonal antibody supplied in PBS with 0.09% (W/V) sodium azide. This antibody is purified through a protein G column, followed by dialysis against PBS.

Storage

Maintain refrigerated at 2-8°C for up to 2 weeks. For long term storage store at -20°C in small aliquots to prevent freeze-thaw cycles.

Precautions

NP1(Nptx1) Antibody (Center) is for research use only and not for use in diagnostic or therapeutic procedures.

NP1(Nptx1) Antibody (Center) - Protein Information

Name Nptx1

Function May be involved in mediating uptake of synaptic material during synapse remodeling or

in mediating the synaptic clustering of AMPA glutamate receptors at a subset of excitatory synapses.

Cellular Location

Secreted {ECO:0000250|UniProtKB:Q15818}. Cytoplasmic vesicle, secretory vesicle. Endoplasmic reticulum

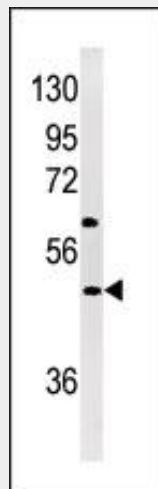
Tissue Location

Cerebellum, hippocampus and cerebral cortex.

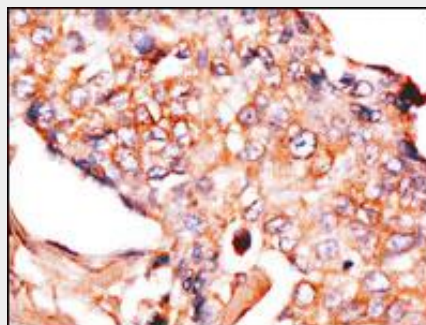
NP1(Nptx1) Antibody (Center) - Protocols

Provided below are standard protocols that you may find useful for product applications.

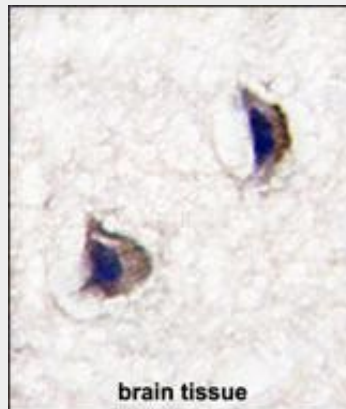
- [Western Blot](#)
- [Blocking Peptides](#)
- [Dot Blot](#)
- [Immunohistochemistry](#)
- [Immunofluorescence](#)
- [Immunoprecipitation](#)
- [Flow Cytometry](#)
- [Cell Culture](#)

NP1(Nptx1) Antibody (Center) - Images

Western blot analysis of anti-NP1(Nptx1) Antibody (Center) (Cat. #AP7272c) in Jurkat cell line lysates (35ug/lane). NP1 (arrow) was detected using the purified Pab.



Formalin-fixed and paraffin-embedded human breast carcinoma reacted with anti-NP1(Nptx1) Antibody (Center), which was peroxidase-conjugated to the secondary antibody, followed by DAB staining. This data demonstrates the use of this antibody for immunohistochemistry; clinical relevance has not been evaluated.



Formalin-fixed and paraffin-embedded human brain tissue reacted with NP1(Nptx1) Antibody (Center) (Cat.#AP7272c), which was peroxidase-conjugated to the secondary antibody, followed by DAB staining. This data demonstrates the use of this antibody for immunohistochemistry; clinical relevance has not been evaluated.

NP1(Nptx1) Antibody (Center) - Background

NPTX1 is a member of the neuronal pentraxin family. Human neuronal pentraxin 1 is similar to rat NP1 which is a binding protein for the snake venom toxin taipoxin.

NP1(Nptx1) Antibody (Center) - References

Hossain,M.A., J. Neurosci. 24 (17), 4187-4196 (2004)
Schlimgen,A.K., Neuron 14 (3), 519-526 (1995)

NP1(Nptx1) Antibody (Center) - Citations

- [Neuronal pentraxin 1: A synaptic-derived plasma biomarker in Alzheimer's disease.](#)