

BTBD1 Antibody (Center)
Purified Rabbit Polyclonal Antibody (Pab)
Catalog # AP7323c**Specification**

BTBD1 Antibody (Center) - Product Information

| | |
|-------------------|------------------------|
| Application | WB, FC,E |
| Primary Accession | O9H0C5 |
| Other Accession | P58544 |
| Reactivity | Human, Mouse |
| Host | Rabbit |
| Clonality | Polyclonal |
| Isotype | Rabbit IgG |
| Calculated MW | 52771 |
| Antigen Region | 295-322 |

BTBD1 Antibody (Center) - Additional Information**Gene ID** 53339**Other Names**

BTB/POZ domain-containing protein 1, Hepatitis C virus NS5A-transactivated protein 8, HCV NS5A-transactivated protein 8, BTBD1, C15orf1, NS5ATP8

Target/Specificity

This BTBD1 antibody is generated from rabbits immunized with a KLH conjugated synthetic peptide between 295-322 amino acids from the Central region of human BTBD1.

Dilution

WB~~1:1000
FC~~1:10~50

Format

Purified polyclonal antibody supplied in PBS with 0.09% (W/V) sodium azide. This antibody is prepared by Saturated Ammonium Sulfate (SAS) precipitation followed by dialysis against PBS.

Storage

Maintain refrigerated at 2-8°C for up to 2 weeks. For long term storage store at -20°C in small aliquots to prevent freeze-thaw cycles.

Precautions

BTBD1 Antibody (Center) is for research use only and not for use in diagnostic or therapeutic procedures.

BTBD1 Antibody (Center) - Protein Information**Name** BTBD1

Synonyms C15orf1, NS5ATP8

Function Probable substrate-specific adapter of an E3 ubiquitin- protein ligase complex which mediates the ubiquitination and subsequent proteasomal degradation of target proteins (PubMed:[14528312](#)). Seems to regulate expression levels and/or subnuclear distribution of TOP1, via an unknown mechanism (By similarity). May play a role in mesenchymal differentiation where it promotes myogenic differentiation and suppresses adipogenesis (By similarity).

Cellular Location

Cytoplasm. Note=Localizes to punctate or elongated cytoplasmic bodies.

Tissue Location

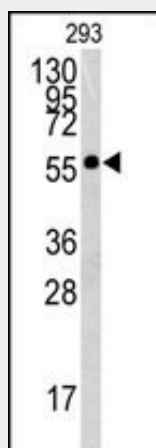
Ubiquitous; highest levels in testes, heart and skeletal muscle.

BTBD1 Antibody (Center) - Protocols

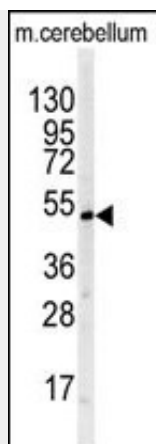
Provided below are standard protocols that you may find useful for product applications.

- [Western Blot](#)
- [Blocking Peptides](#)
- [Dot Blot](#)
- [Immunohistochemistry](#)
- [Immunofluorescence](#)
- [Immunoprecipitation](#)
- [Flow Cytometry](#)
- [Cell Culture](#)

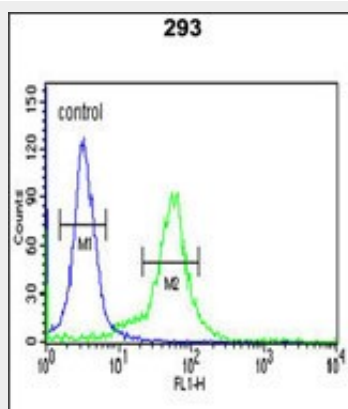
BTBD1 Antibody (Center) - Images



Western blot analysis of BTBD1 antibody (Center) (Cat.#AP7323c) in 293 cell line lysates (35ug/lane). BTBD1 (arrow) was detected using the purified Pab.



Western blot analysis of BTBD1 antibody (Center) (Cat.#AP7323c) in mouse cerebellum tissue lysates (35ug/lane). BTBD1 (arrow) was detected using the purified Pab.



BTBD1 Antibody (Center) (Cat. #AP7323c) flow cytometric analysis of 293 cells (right histogram) compared to a negative control cell (left histogram). FITC-conjugated goat-anti-rabbit secondary antibodies were used for the analysis.

BTBD1 Antibody (Center) - Background

BTBD1 binds topoisomerase I. The N-terminus contains a proline-rich region and a BTB/POZ domain (broad-complex, Tramtrack and bric a brac/Pox virus and Zinc finger), both of which are typically involved in protein-protein interactions. Subcellularly, the protein localizes to cytoplasmic bodies.

BTBD1 Antibody (Center) - References

- Pisani,D.F., Cabane,C. Cell Death Differ. 11 (11), 1157-1165 (2004)
- Xu,L., Yang,L. Exp. Cell Res. 288 (1), 84-93 (2003)
- Xu,L., Yang,L. BMC Genomics 3 (1), 1 (2002)